

Gate Opener System SW32

SW32 are powerful and quiet motors designed to be used in larger-sized swing gates, which allow DIY users to activate the gate with a remote control. It's well-designed as a complete kit for consumers to install easily by themselves.



Features

- Main applications: Gate opener
- Max. leaf length: 2.75m
- Max. leaf weight: 275kg
- Input: 110 / 230V AC
- IP Level: IP44
- Duty cycle: 20%, max. 5 min. continuous operation in 20 min.
- Operating ambient temperature: -20°C ~ +60°C
- Excellent reliability and easy installation
- Recharging function for backup battery
- Emergency stop function
- Pedestrian mode (single leaf opening)
- Work with either 12/24V motors (depending on transformer voltage)
- Photo sensor/safety edge connection
- Slow down function
- Rolling code inspection for more secure access control
- Up to 39 keys can be memorized
- Copy function for new remote controls
- E-Lock connection
- Gate opener with limit switch
- CE Certified

Options

- Battery box: Including a 12V/10Ah rechargeable lead-acid battery.
- Solar panel: 7W/18V

Motor

- Input: 12V DC
- Max. leaf length: 2.75m
- Max. leaf weight: 275kg
- Casing: Plastic, Pantone 432U, glossy
- Arm: Aluminum, Pantone cool gray 10C, glossy
- Cable length: 0.5M & 0.5M
- Manual disengaging system with an allen key



SW32

Control Box

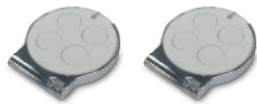
- Input: 110 / 230V AC : 60 / 50Hz
- Output: 12V DC / 80W Max.
- IP Level: IP44
- Color: Black
- 8 cable grommets at the bottom
- Dimensions: 300(L) x 200(W) x 120(H) mm
- Weight: 2.2kg



GCC1

Remote Control

- Frequency: 433.92MHz with Rolling code
- 4 buttons, up to 10 channels
- Battery: 3V/CR2032 (X3R), 12V/A27 (XM4H), 12V/A23 (XA4H)



X3R



XM4H



XA4H

Warning Light

- Input: 12V DC / 10W
- Provide flashing signals during gate movement and obstacle detection



WLT1



WLT5

Photocells

- Current consumption:
TX: 30mA
RX: 25mA



IPH1

Ordering Key

	SW32	GCC1	X3R	WLT1	IPH1
Actuator	SW32				
Control box	GCC1 (default)				
Remote control	X3R (default) XM4H XA4H				
Warning light	WLT1 (default) WLT5				
Photocells	IPH1 (default)				

Terms of Use

The user is responsible for application suitability of Moteck products. As ongoing improvement process continues, products listed on the Moteck website are subject to change without prior notice. Moteck reserves the right to terminate the sales or remove any product displayed on the website, or listed in its catalogues.