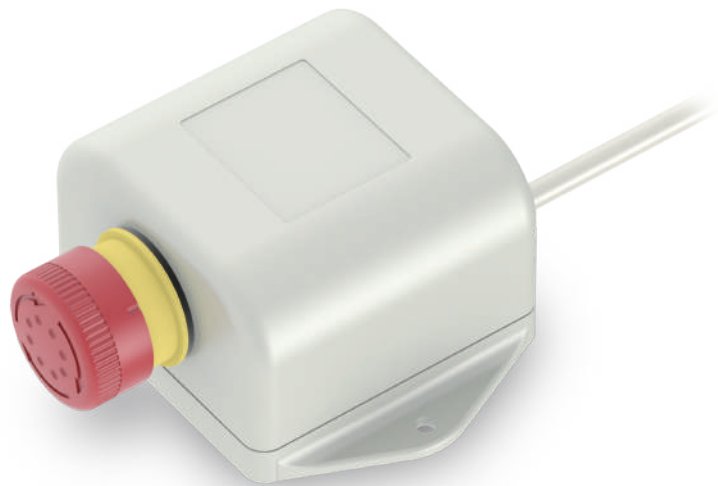


Stop Button

SB1

SB1 stop button is widely compatible with MOTECK standard control boxes and hand controls for medical applications. It is a safety switch to stop all actuators by cutting the power from control box.

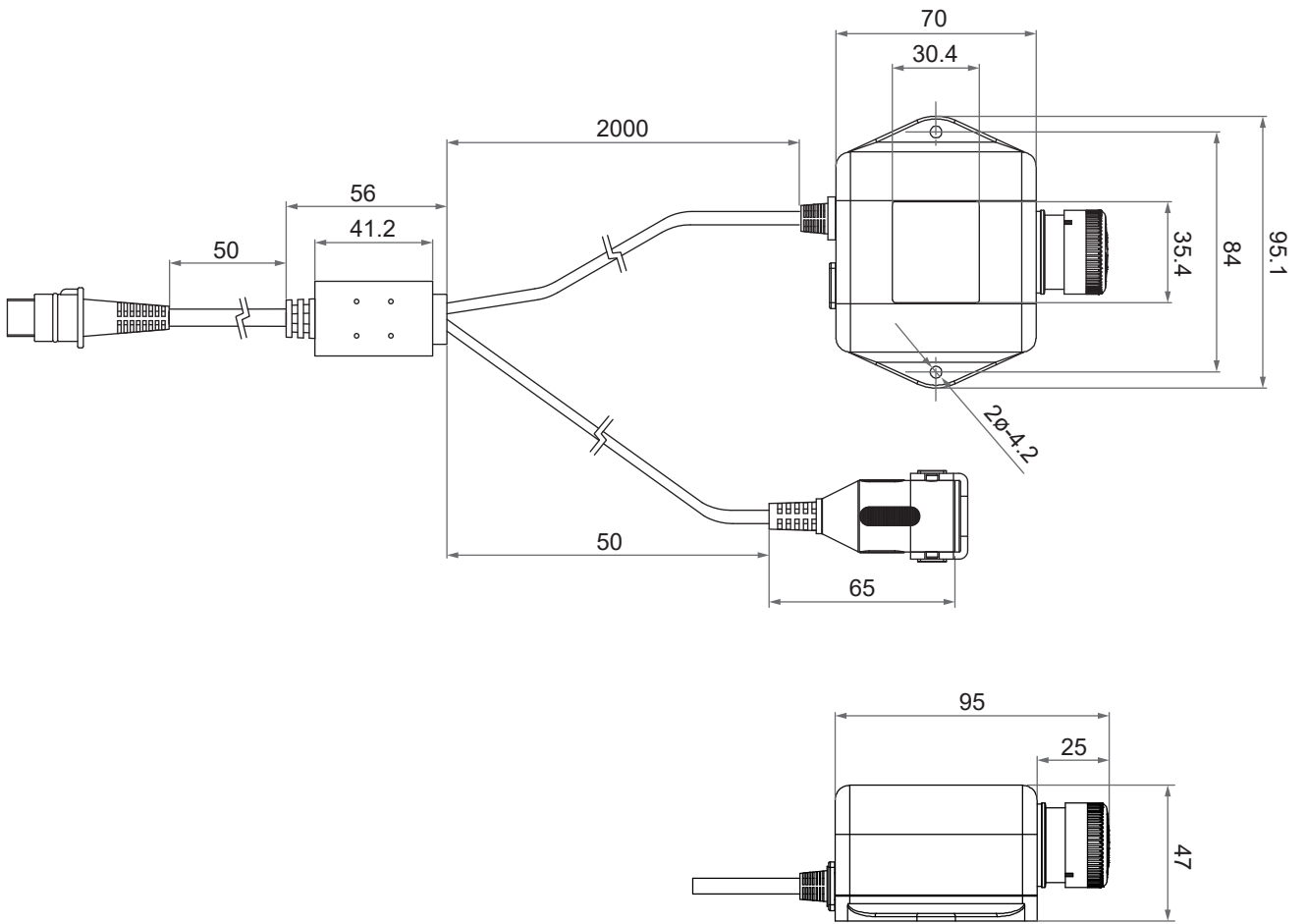


Features

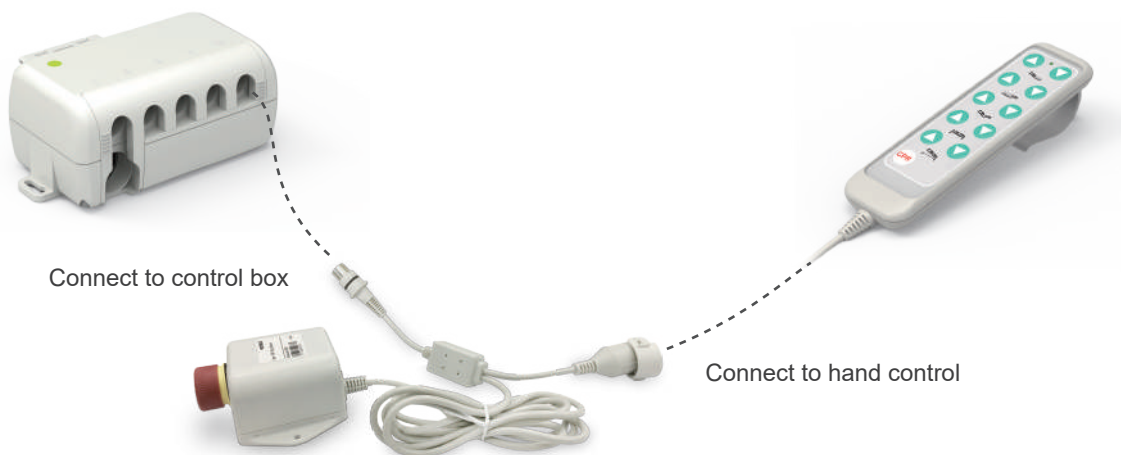
- Main applications: Medical
- One button pressed to cut off all power output of the control box
- Turn the button to restore the control box to standby
- IP Level: IPX6
- Color: Light grey RAL7035

Dimensions

Unit: mm



Connection Example

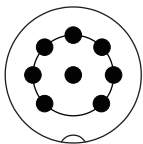


Compatibility

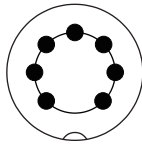
Product	Spec	Models	Compatible SB1 option
Control box	<ul style="list-style-type: none"> Motek P1 control category 1 or 2 motor channels 1 control port only 	CB2P, CB4P, MD6C, MD7C, CM45	Motek H-type 5-pin DIN plug
	<ul style="list-style-type: none"> Motek P1 control category 3 motor channels 1 control port only 	CB4P, MD6C, MD7C, CM45	Motek H-type 7-pin DIN plug
	<ul style="list-style-type: none"> Motek P1 control category 4 motor channels 1 control port only 	CB4P, MD6C, MD7C, CM45	Motek H-type 8-pin DIN plug
	<ul style="list-style-type: none"> Motek MoBus control category 1 control port only 	MD6C-M, CB5P-M	Motek H-type 7-pin DIN plug
Hand control	<ul style="list-style-type: none"> Motek P1 control category 1 ~ 4 motor channels Motek H-type DIN plug 	HC, HF, H3F, HT, H3T, H3N, HS12	Standard
	<ul style="list-style-type: none"> Motek MoBus control category Motek H-type DIN plug 	H3T-M, CP1, HS12-M	Standard
Pedal control	<ul style="list-style-type: none"> Motek P1 control category 1 ~ 3 motor channels Motek H-type DIN plug 	FS1, FS2	Standard

Connectors

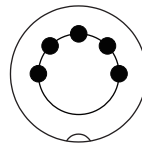
Motek H-type DIN plug to connect with control box



8-pin DIN plug



7-pin DIN plug

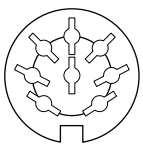


5-pin DIN plug



H-type plug

Socket for Hand control with Motek H-type DIN plug



8-pin socket



H-type socket

Ordering Key

SB1 - S - 2 5 0 0

Version	S
Cable length	2: 2M
Plug	5: 5-pin DIN plug 7: 7-pin DIN plug 8: 8-pin DIN plug
Reserved	0: No meaning
Reserved	0: No meaning

Terms of Use

The user is responsible for application suitability of Moteck products. As ongoing improvement process continues, products listed on the Moteck website are subject to change without prior notice. Moteck reserves the right to terminate the sales or remove any product displayed on the website, or listed in its catalogues.