

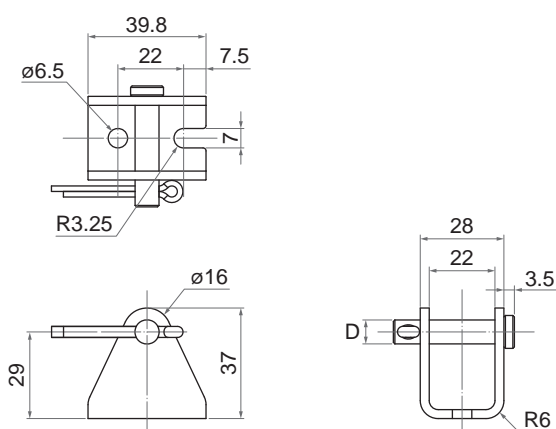
# Mounting Bracket

MB22/MB30/C15 bracket is an auxiliary accessory for installing the actuator, which can be applied to the front and rear connectors of various Moteck actuators, making the user's product design simpler and the installation of the actuator more convenient.

## MB22 Mounting Bracket

| Usage  | Specification  | Applicable models  | Applicable conditions                     |
|--|--|--|---|
| Connect the front or rear connectors of the actuators. | <ul style="list-style-type: none"> <li>Material: Steel</li> <li>Contains mounting pin and lock pin.</li> </ul> | LD12, LD2, LD20, LD3, LD3L, LD36, MD10, MD21, MK32, MK45 | Mounting hole (D):<br>ø6.4mm, ø8mm, ø10mm |

Dimension:



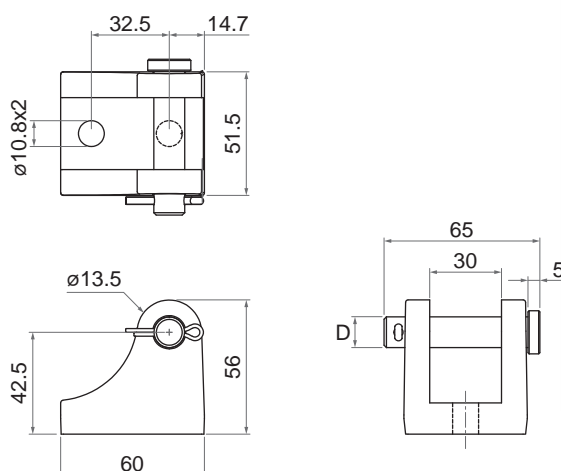
Unit: mm



## MB30 Mounting Bracket

| Usage  | Specification  | Applicable models                                   | Applicable conditions       |
|--|--|---|-----------------------------|
| Connect the front or rear connectors of the actuators. | <ul style="list-style-type: none"> <li>Material: Steel</li> <li>Contains mounting pin and lock pin.</li> </ul> | IA5, ID10, ID10BT, ID10P, ID11*, ID12, ID10G, ID10K | Mounting hole (D):<br>ø13mm |

Dimension:



Unit: mm

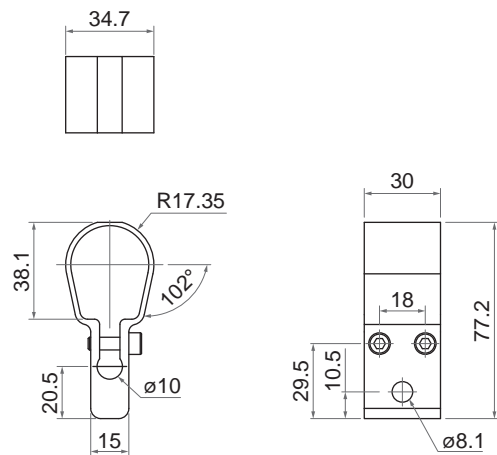


\* **Remarks:** ID11 rear connector only standard 0° pivot can be equipped with MB30 bracket.

# C15 Clamp

| Usage                                   | Specification  | Applicable models | Applicable conditions                                     |
|---|--|-------------------|---|
| As the rear connector of the actuators. | <ul style="list-style-type: none"><li>• Material: Anodizing aluminum</li><li>• Contains fixed screws</li></ul> | LD2, LD3, LD3L    | Comply with the section shape and size of the outer tube. |

Dimension:



Unit: mm

