

Actuator

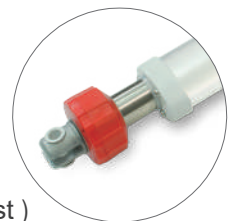
MD120

MD120 is a quiet and powerful actuator, which can push up to 12,000N. It's designed for use in a variety of medical and home care applications, such as patient hoist and medical bed.



Features

- Main applications: Home care, medical
- Input voltage: 24V DC
- Stroke: 100 ~ 400 mm
- Max. load: 12,000N (push) / 6,000N (pull)
- Typical speed and current: Refer to Performance Data
- Noise level: $\leq 50\text{dB}$
- IP level: IPX4 (static, non-action)
- Safety nut (in push direction)
- Preset limit switches
- Aluminum outer tube
- Stainless extension tube
- Color: Light gray RAL 7035
- Duty cycle: 10%, max. 2 min. continuous operation in 20 min.
- Ambient operation temperature: $+5^{\circ}\text{C} \sim +40^{\circ}\text{C}$
- Storage ambient temperature: $-25^{\circ}\text{C} \sim +65^{\circ}\text{C}$
- Certified: CE Marking, EN60601-1-2, IEC 61000-4-2, IEC 61000-4-3, IEC 61000-4-8
- Safety options: mechanical push only extension tube, electrical push only function
- IPX6 level option (static, non-action)
- Optional MR3 manual release (Fig. 1): To retract actuator slowly and put down the patient safely by turning the MR3 knob with hand when losing power in the application of patient hoist)
- Optional Pivot orientation 90° turned for rear connector

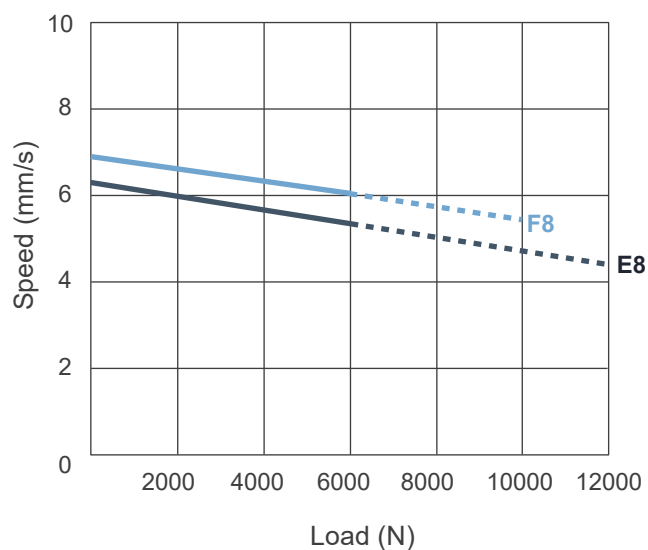


(Fig. 1)

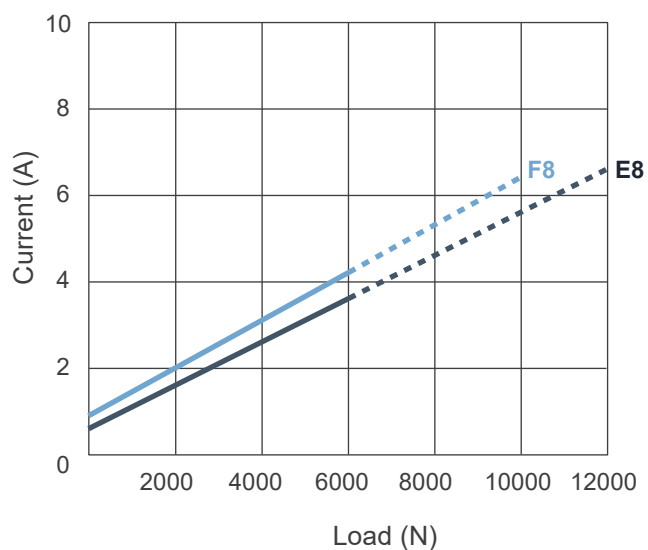
Performance Data

Model No.	Push Max. (N)	Pull Max. (N)	*Typical speed (mm/s)		*Typical current (A) @ 24V	
			No load	Full load	No load	Full load
MD120-24 E8 -XXX.XXX	12,000	6,000	6.3	4.4	0.6	6.6
MD120-24 F8 -XXX.XXX	10,000	6,000	6.9	5.5	0.9	6.5

Speed vs. Load



Current vs. Load



Push / Pull Load — Push Load - - -

* Remarks:

The typical speed or typical current means the average value neither upper limit nor lower limit. The performance curves are made with typical values.

Dimensions

- Available stroke (S) range: 100 ~ 400 mm
- Retracted length (A) \geq Stroke (S)+210+L1+L2
- L1:

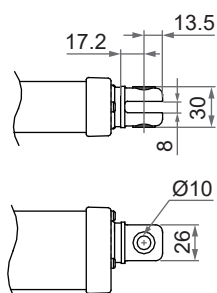
Unit: mm

Motor and Spindle type	Max load (N)	Stroke (mm)		
		100~300	301~350	351~400
F8	10000	+0	+10	+20
E8	12000	+20	+30	+40

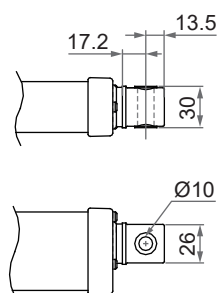
- L2:

Front Connector	Safety option	
	None	P or E
1, 2, 3, 4	+0	+5
5, 6, 7, 8	+0	+110

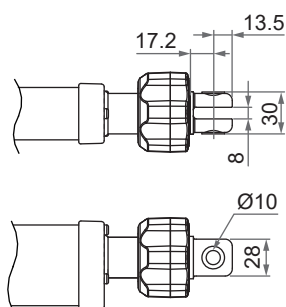
• Front Connector



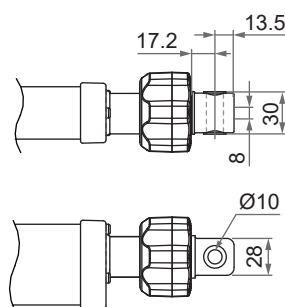
- 1: Slot type Zinc alloy, bushing Ø10
2: Without bushing Ø12 (For Push load only)



- 3: Solid type Zinc alloy, bushing Ø10
4: Without bushing Ø12

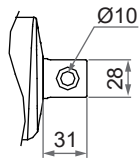
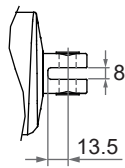


- 5: Slot type Zinc alloy with MR3, bushing Ø10
6: Without bushing Ø12 (For Push load only)

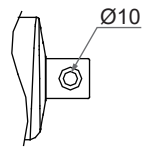
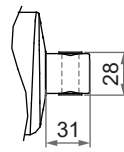


- 7: Solid type Zinc alloy with MR3, bushing Ø10
8: Without bushing Ø12 (For Push load only)

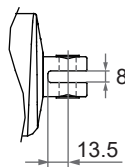
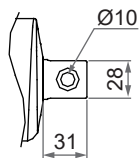
• Rear Connector



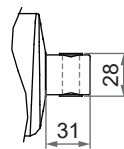
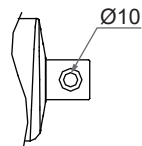
- 1: Slot type Zinc alloy, bushing Ø10, 0° pivot
2: Without bushing Ø12, 0° pivot (For Push load only)



- 3: Solid type Zinc alloy, bushing Ø10, 0° pivot
4: Without bushing Ø12, 0° pivot

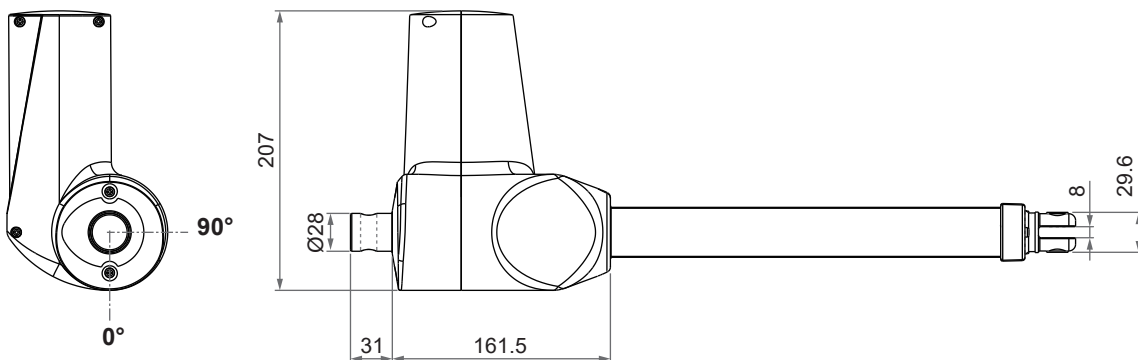
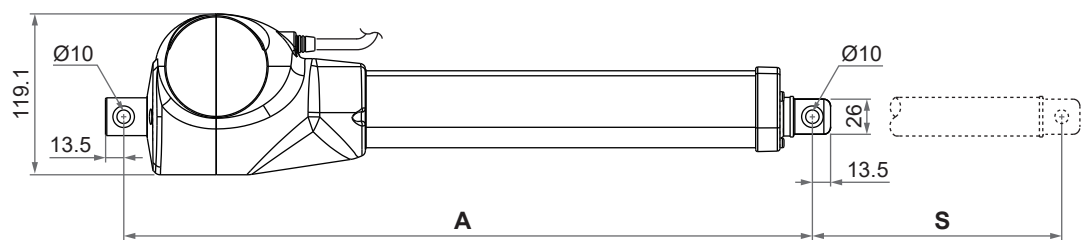


- 5: Slot type Zinc alloy, bushing Ø10, 90° pivot
6: Without bushing Ø12, 90° pivot (For Push load only)



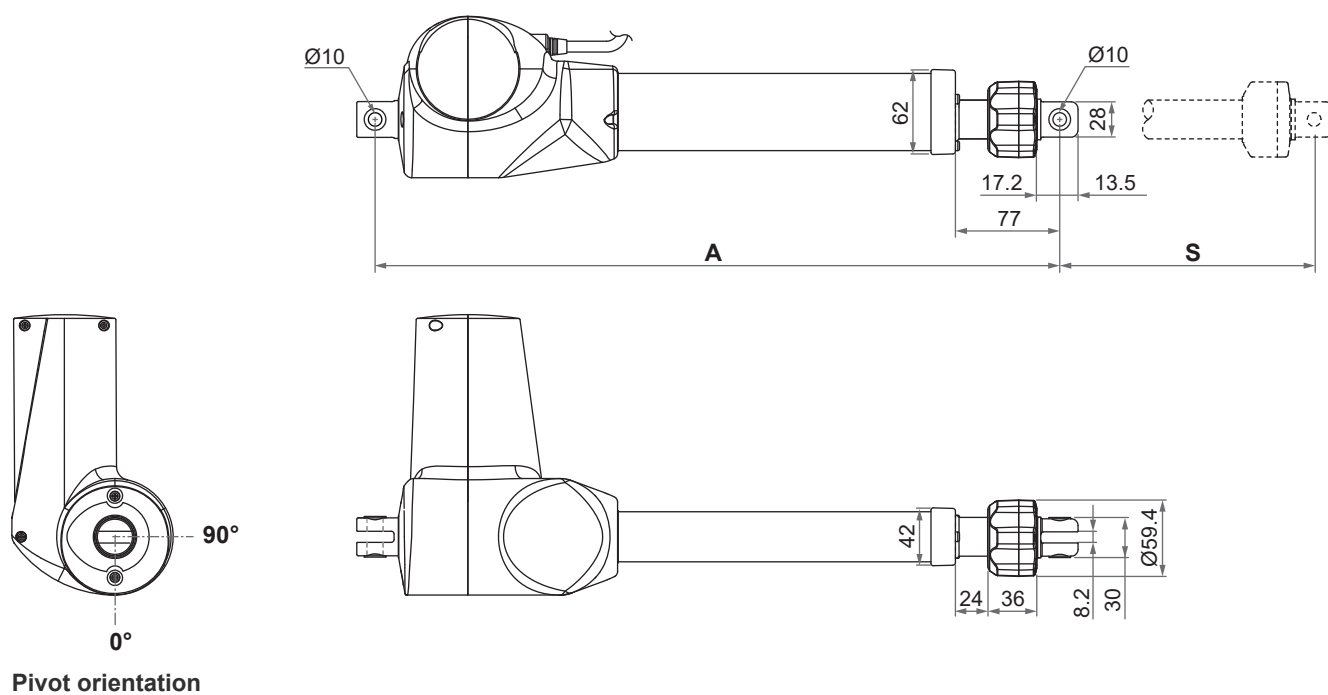
- 7: Solid type Zinc alloy, bushing Ø10, 90° pivot
8: Without bushing Ø12, 90° pivot

• Standard (without manual release)



Pivot orientation

• With MR3 manual release

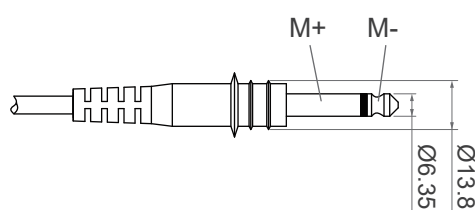


Compatibility

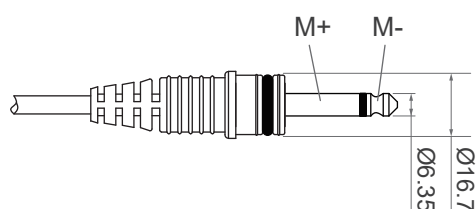
Product	Model	MD120 spec
Control box	CM42	With Moteck J1-type phone jack
	CB4P-HP, CM43	With Moteck J2-type phone jack
	CBP2, CBP3	With Moteck J1-type or J2-type phone jack

Cable Plug

• Moteck J1-type phone jack



• Moteck J2-type phone jack



* Remarks:

Connect Pin (M+) to “+” & Pin (M-) to “-” of DC power, the actuator will extend.



J1-type



J2-type

Ordering Key

		MD120 - 24 E8 - 330 - 430 - 1 1 E 0 G 4 1											
Input voltage	24: 24V DC												
Motor and Spindle type	E8: 3000rpm / 8mm pitch F8: 3600rpm / 8mm pitch												
Retracted length	XXX (Refer to Dimensions)												
Extended length	XXX (Refer to Dimensions)												
Front connector*	1: Slot with bushing, Ø10mm 2: Slot w/o bushing, Ø12mm 3: Solid with bushing, Ø10mm 4: Solid w/o bushing, Ø12mm 5: Type 1 with MR3 6: Type 2 with MR3 7: Type 3 with MR3 8: Type 4 with MR3												
Rear connector	1: Slot with bushing, Ø10mm, 0° pivot 2: Slot w/o bushing, Ø12mm, 0° pivot 3: Solid with bushing, Ø10mm, 0° pivot 4: Solid w/o bushing, Ø12mm, 0° pivot 5: Type 1 turn 90° 6: Type 2 turn 90° 7: Type 3 turn 90° 8: Type 4 turn 90°												
Safety option*	0: None E: Electrical push only function P: Mechanical push only extension tube												
Reserved	0: No meaning												
Color	G: Light gray RAL 7035												
IP level	4: IPX4 (standard) 6: IPX6												
Cable length	1: 300mm straight 2: 1000mm straight 3: 400mm coiled												

* Remarks:

The safety option "E" must be selected, if MR3 manual release is chosen in front connector.

Terms of Use

The user is responsible for application suitability of Moteck products. As ongoing improvement process continues, products listed on the Moteck website are subject to change without prior notice. Moteck reserves the right to terminate the sales or remove any product displayed on the website, or listed in its catalogues.