

Hand Control HZ06

HZ06 is a direct-cut hand controller specially designed for recliner. It is directly connected to the actuator through a specific connector, and together with the power supply becomes a simple system without a control box.



Feature

- Main applications: Furniture
- Input / Output voltage: 29 V DC
- Input / Output current: 2A
- Max. motor number to control: 1
- Number of buttons: 2
- Color: Zinc alloy
- Cable length: Straight, 1385mm±30mm

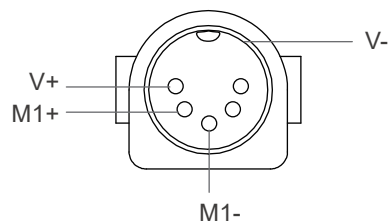
Compatibility

Product	Model	Compatible requirement
Actuator	MK33, BD62, FD20, FD40	- With Moteck Direct-Cut cable DL1*
	BD61, FD60, FD61	- With Moteck Direct-Cut cable DL2*

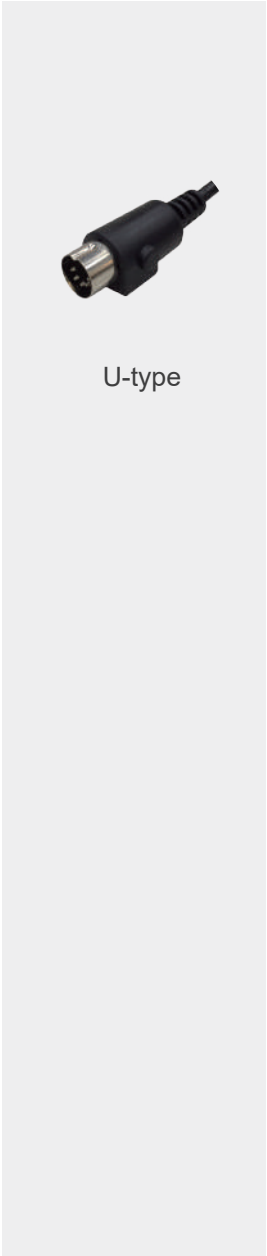
***Remarks:**
Connect Direct-Cut cable to DC power supply and hand control directly, no control box.

Cable Plug

- With Moteck Direct-Cut cable DL1

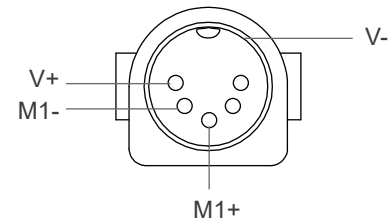


Moteck U-type 5-pin DIN male plug
(Moteck pinout: C-DIN-51R)



U-type

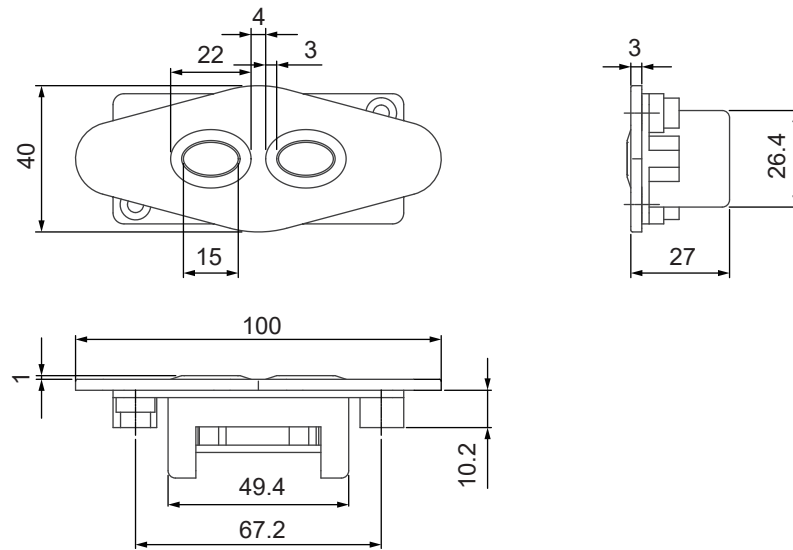
- With Moteck Direct-Cut cable DL2



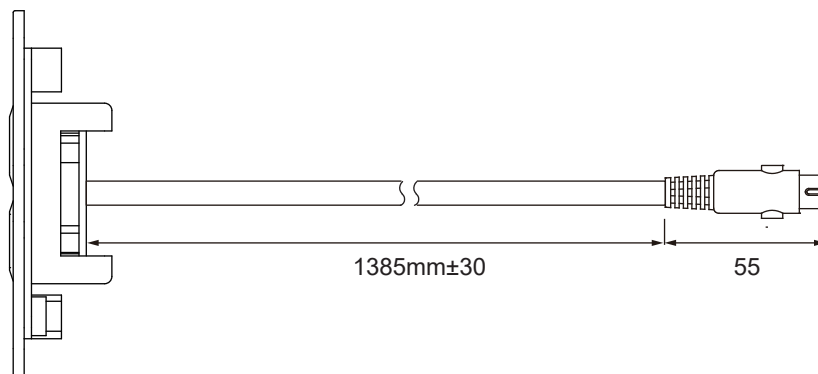
Moteck U-type 5-pin DIN male plug
(Moteck pinout: C-DIN-51H)

Dimensions

- HZ06



- Cable length



Button definition

- Press the UP/DOWN button to extend/retract actuator.
When releasing the button, actuator stops immediately.



More information about installation steps is stated in User Guide, which can be downloaded from Moteck website.

Terms of Use

The user is responsible for application suitability of Moteck products. As ongoing improvement process continues, products listed on the Moteck website are subject to change without prior notice. Moteck reserves the right to terminate the sales or remove any product displayed on the website, or listed in its catalogues.