

Hand Control HS02

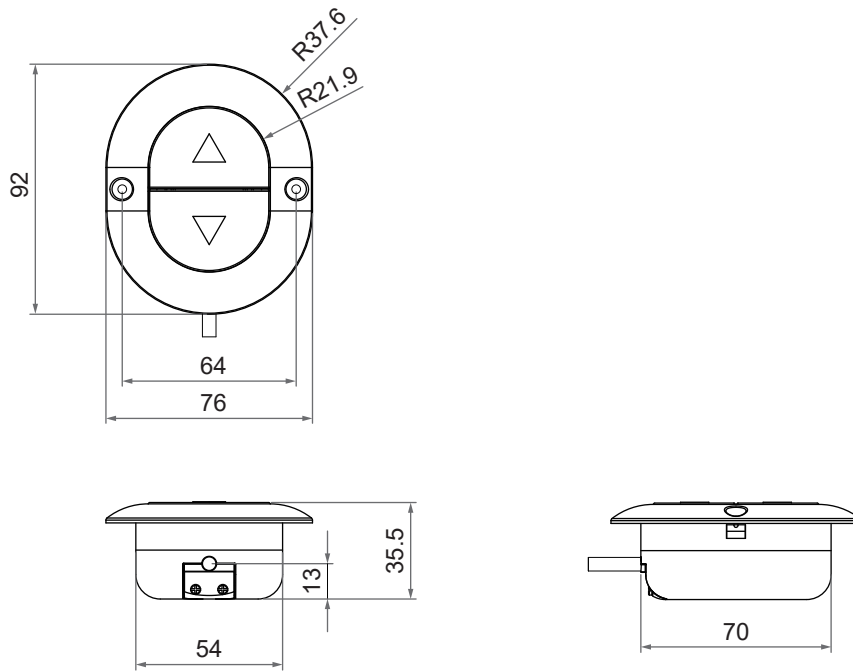
HS02 is an embedded direct-cut hand controller specially designed for recliner. It is directly connected to the actuator without passing through the control box, and provides simply switch functions.



Features

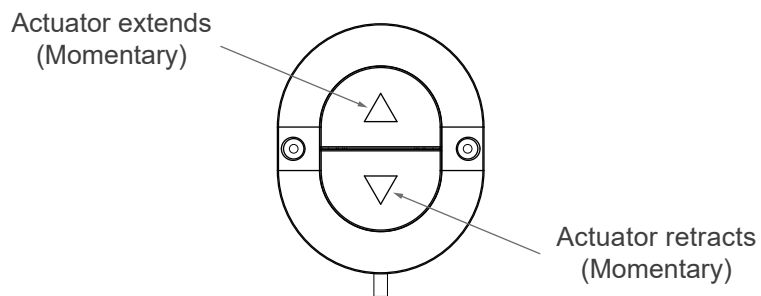
- Main applications: Furniture
- Motor number to control: 1
- Number of buttons: 2
- Color: Black
- Cable length: 1400mm, straight

Dimensions



Unit: mm

Button Definition



Note:

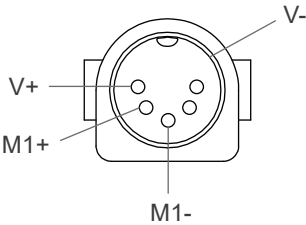
Please connect actuator to confirm button definition “extend” or “retract”, before installing on the frame.

Compatibility

Product	Model	Compatible requirement
Actuator	FD10, FD20, FD40, FD60, BD23, BD61, BD62, MK33	With Moteck direct-cut power cable DL1

Cable Plug

Compatible with the control connector of direct-cut power cable DL1



Moteck U-type 5-pin DIN male plug



U-type male plug