

Hand Control HJ

HJ is designed for the applications of home care and furniture, which can work well with Moteck standard control box and double motor, such as T control, CB3T, CB4M, CBT2, CS1, CS2 and Twinmat series. With the optional magnetic back cover, HJ has one more choice of attaching ways.



Feature

- Main applications: Home care, furniture
- Max. motor number to control: 3
- Available number of buttons: 2, 4 or 6
- IP Protection level: IP20
- Color: Black
- LED indicator
- With hook for easy placement (30mm gap)
- Cable length: Total 880mm long with 420mm spiral

Option

- 50mm hook gap
- Magnetic back cover (without hook)

Compatibility

Product	Model	HJ spec
Control box	T control, CB3T, CB4M, CBT2, CS1, CS2	- Moteck control category P1 - With Moteck F-type DIN plug
Double motor	TW40/60, TW41/61, TW42, TW43	- Moteck control category P1 - With Moteck A-type DIN plug

Cable plug



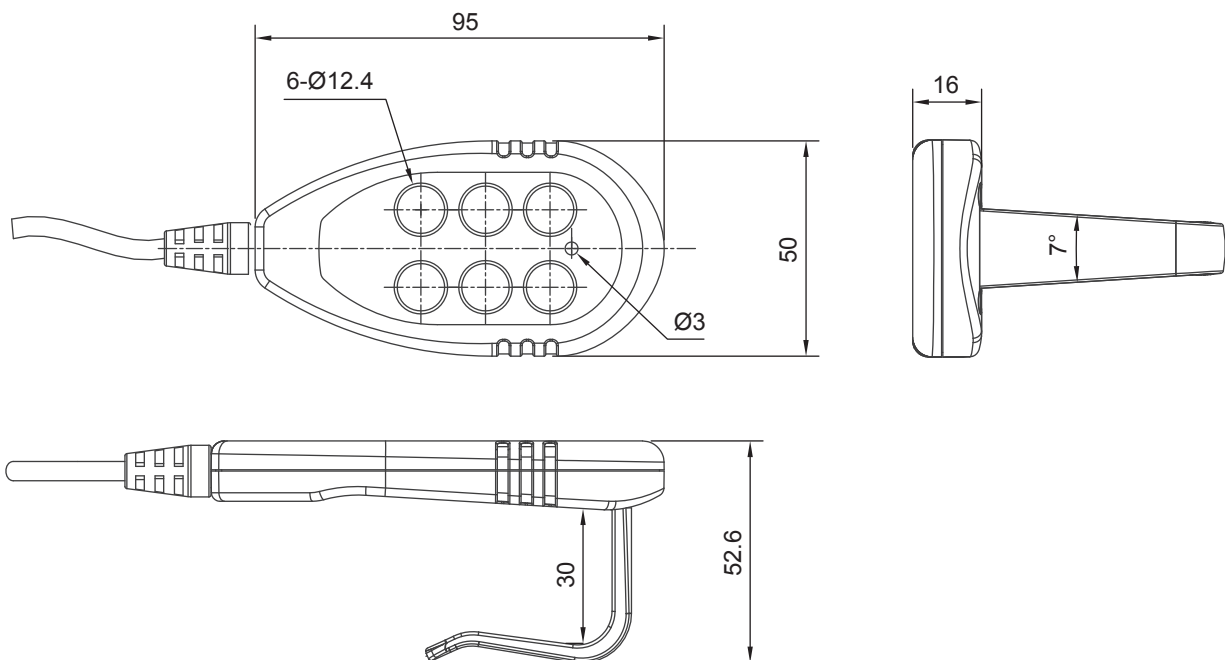
F-type



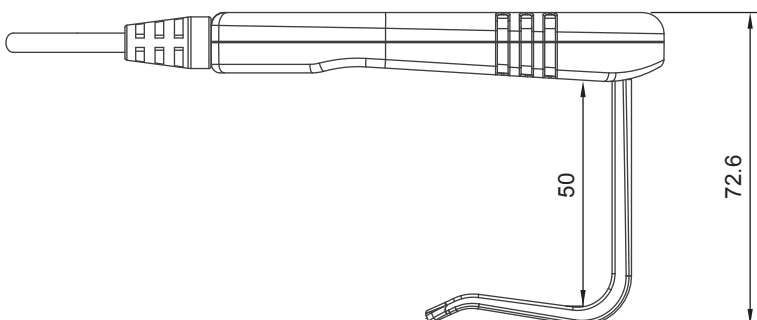
A-type

Dimensions

Dimensions with 30mm hook



Dimensions with 50mm hook



Standard Panel Artwork

Motek control category P1

Code	A	B	D
Artwork			
	HJ-02-1-00	HJ-02-1-00	HJ-04-2-00

- Artwork A, B, D

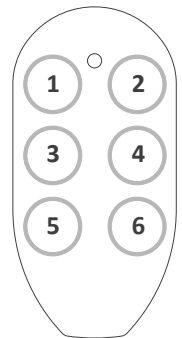
- ① Actuator #1 extend
- ② Actuator #1 retract
- ③ Actuator #2 extend
- ④ Actuator #2 retract



Code	C	F
Artwork		
	HJ-04-2-00	HJ-06-3-00

- Artwork C, F

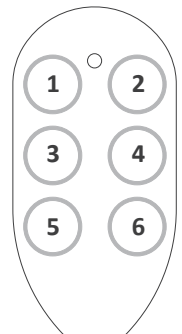
- ① Actuator #1 extend
- ② Actuator #1 retract
- ③ Actuator #2 extend
- ④ Actuator #2 retract
- ⑤ Actuator #3 extend
- ⑥ Actuator #3 retract



Code	E
Artwork	
	HJ-06-2-01

- Artwork E

- ① Actuator #1 extend
- ② Actuator #1 retract
- ③ Actuator #1 & 2 extend
- ④ Actuator #1 & 2 retract
- ⑤ Actuator #2 extend
- ⑥ Actuator #2 retract



Ordering Key

HJ - 04 - 2 - 00 - H30 - 0 - C - 0 - F	
Button	02: 2 buttons 04: 4 buttons 06: 6 buttons
Number of motor	1: 1 motor 2: 2 motors 3: 3 motors
Function	00: Standard 01: Joint movement
Option	H30: 30mm hook (standard) H50: 50mm hook H0M: Magnetic back cover
Housing color	0: Black
Panel artwork code	A~F: (Refer to Standard Panel Artwork)
Cable length	0: 880mm in length with 420mm spiral
Cable plug	F: F-type DIN plug A: A-type DIN plug

Terms of Use

The user is responsible for application suitability of Moteck products. As ongoing improvement process continues, products listed on the Moteck website are subject to change without prior notice. Moteck reserves the right to terminate the sales or remove any product displayed on the website, or listed in its catalogues.