

Actuator

FD60

FD60 is a quiet and powerful actuator up to 6000N thrust, designed for use in furniture application. Our T-control box, which can be perfectly attached and integrated to FD60, is available for customers to choose.



Features and Options

Main application: Furniture

Standard features:

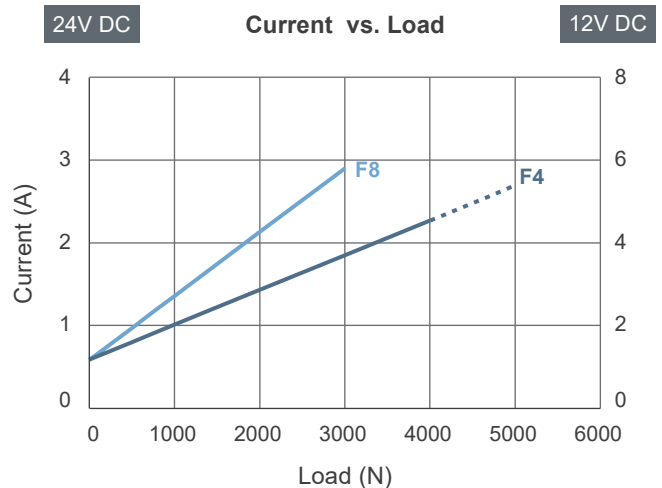
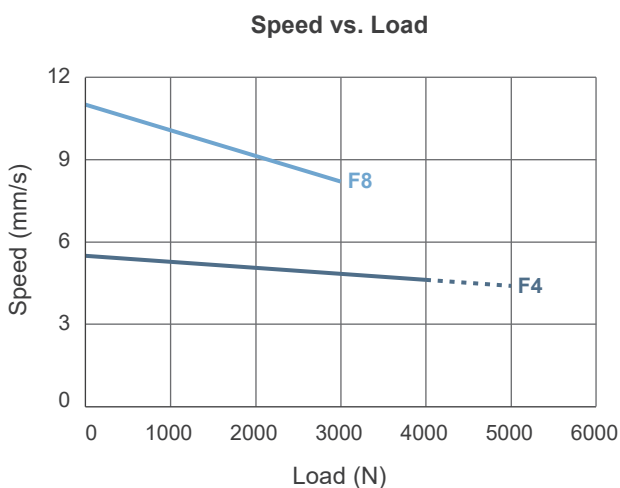
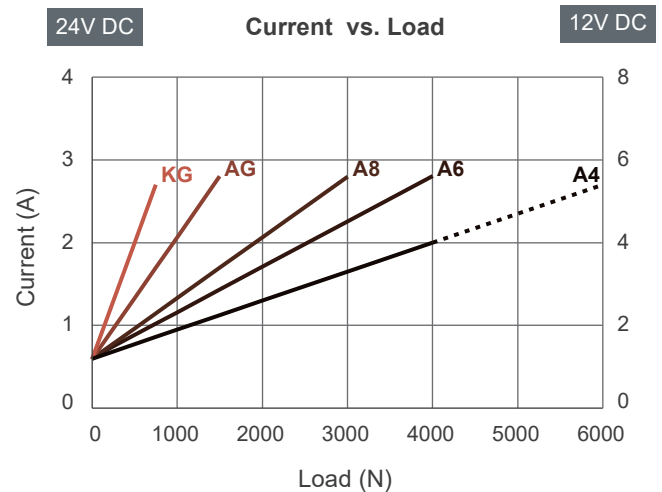
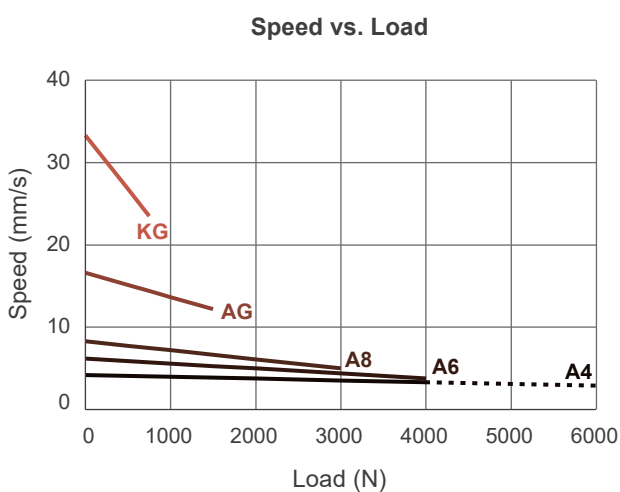
- Input voltage: 12V DC / 24V DC
- Max. load: 6000N (push) / 4000N (pull)
- Speed at no load: 33.3mm/sec (typical value)
- Speed at full load: 2.9mm/sec (typical value @6000N loaded)
- Stroke: 50 ~ 300mm
- Noise level: ≤ 50 dB
- IP level: IP42
- Preset limit switches
- Duty cycle: 10%, max. 2 min. continuous operation in 20 min.
- Operating ambient temperature: -20°C ~ +65°C
- Certified: CE Marking, EMC Directive 2014/30/EU,
UL 962 Standard for Household and Commercial Furnishings.

Options:

- Positioning signal feedback with Hall effect sensor x 1
- Positioning signal feedback with Hall effect sensor x 2
- Mechanical push only extension tube
- Mechanical brake

Performance Data

Model No.	Push Max. (N)	Pull Max. (N)	* Self-locking ability (N)	** Typical speed (mm/s)		** Typical current (A)			
				No load	Full load	No load		Full load	
						12V	24V	12V	24V
FD60-XX-A4	6000	4000	5000	4.2	2.9	1.2	0.6	5.4	2.7
FD60-XX-A6	4000	4000	2500	6.2	3.8	1.2	0.6	5.6	2.8
FD60-XX-A8	3000	3000	2000	8.3	5.0	1.2	0.6	5.6	2.8
FD60-XX-AG	1500	1500	700	16.6	12.2	1.2	0.6	5.6	2.8
FD60-XX-KG	750	750	0	33.3	23.5	1.2	0.6	5.4	2.7
FD60-XX-F4	5000	4000	5000	5.5	4.4	1.2	0.6	5.6	2.8
FD60-XX-F8	3000	3000	2000	11.0	8.2	1.2	0.6	5.8	2.9



Push / Pull load — Push load - - -

Remarks:

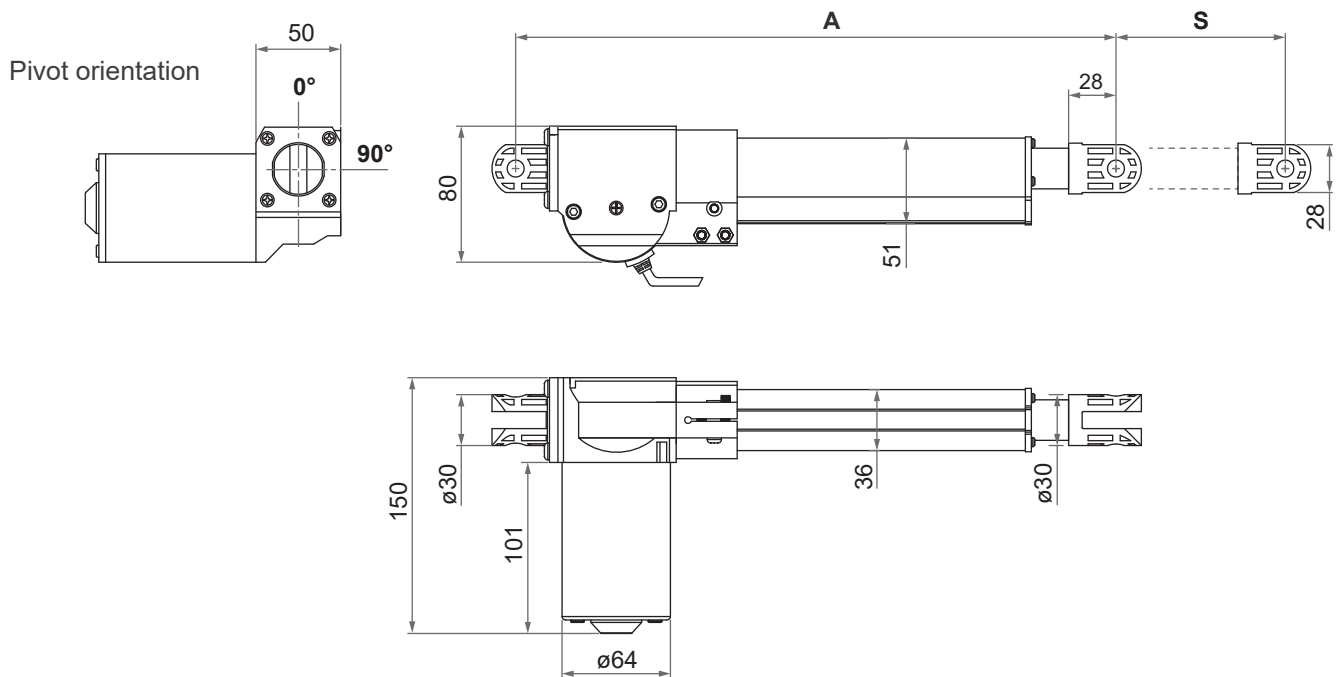
- * The self-locking ability is performed by short circuit the motor terminals when the actuator is powered off. All MOTECK compatible control boxes are designed with this feature. Mechanical brake in push direction is available upon request, to further enhance the self-locking ability to maximum load.
- ** The typical speed or typical current means the average value neither upper limit nor lower limit. The performance curves are made with typical values.

Dimensions

- Available stroke (S) range = 50 ~ 300mm (±3mm)
- Extended length (B) = Retracted length (A) + Stroke (S)
- Retracted length (A)

Front connector code Rear connector code	1, 5, 8	2, 3, 7
1, 2	$A \geq S + 188\text{mm}$ (±3mm)	$A \geq S + 160\text{mm}$ (±3mm)
5 (with crank function)	$A \geq S + 198\text{mm}$ (±3mm)	$A \geq S + 170\text{mm}$ (±3mm)

• Drawing

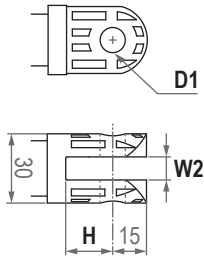


Note: As an example in 0° orientation for rear connector.

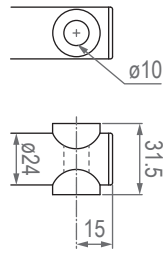
Unit: mm

● **Front connector**

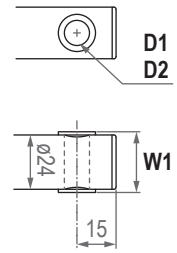
1: Plastic



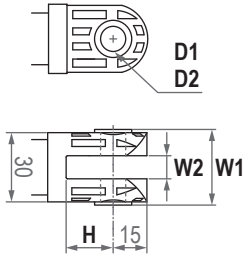
2: Drilled hole with brass bushing



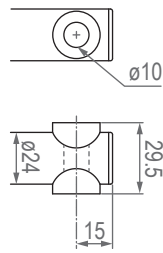
3: Drilled hole



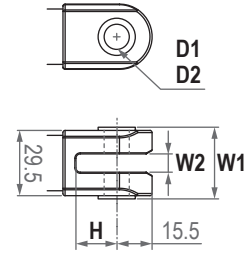
5: Metal



7: Drilled hole with nylon bushing



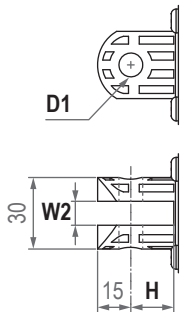
8: Enhanced metal



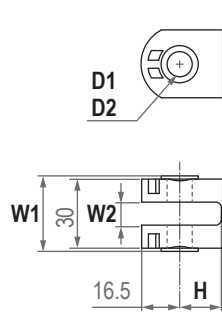
Front connector code	Diameter of pivot without bushing (D1)	Diameter of pivot with bushing (D2)	Width with bushing (W1)	Slot width (W2)	Slot depth (H)
1	$\varnothing 8, \varnothing 10, \varnothing 12$	N/A	N/A	10	20
2	N/A	N/A	N/A	N/A	N/A
3	$\varnothing 8, \varnothing 10, \varnothing 12, \varnothing 14$	$\varnothing 8, \varnothing 10$	26	N/A	N/A
5	$\varnothing 8, \varnothing 10, \varnothing 12$	$\varnothing 8, \varnothing 10$	32	10	20
7	N/A	N/A	N/A	N/A	N/A
8	$\varnothing 10, \varnothing 12$	$\varnothing 8, \varnothing 10$	31.5	8	19.5

● **Rear connector**

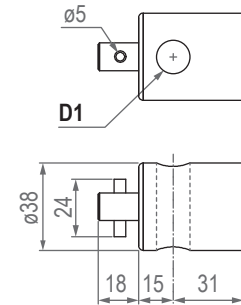
1: Plastic



2: Metal



5: Metal (with crank function)



Rear connector code	Diameter of pivot without bushing (D1)	Diameter of pivot with bushing (D2)	Width with bushing (W1)	Slot width (W2)	Slot depth (H)
1	$\varnothing 8, \varnothing 10, \varnothing 12$	N/A	N/A	6, 10	17
2	$\varnothing 8, \varnothing 10, \varnothing 12$	$\varnothing 8, \varnothing 10$	32	6, 10	17
5	$\varnothing 14.5$	N/A	N/A	N/A	N/A

Unit: mm

Compatibility

Product	Model	FD60 spec
Control box	T-control, CS1, CS2, CB3T, CB4M, CBT2, CBTR	<ul style="list-style-type: none"> • Without positioning sensor • With Moteck F-type 4-pin DIN plug
	CF11H, CF12H	<ul style="list-style-type: none"> • Without positioning sensor • With Moteck L3-type minifit 6-pin plug
	CB3T-SY, CB4M-S, CB4M-B	<ul style="list-style-type: none"> • With dual Hall effect sensors for positioning • With Moteck F-type 6-pin DIN plug
	CB3T-SYD	<ul style="list-style-type: none"> • 12V DC motor • With dual Hall effect sensors for positioning • With Moteck F-type 6-pin DIN plug
	CF11S, CF12S	<ul style="list-style-type: none"> • With dual Hall effect sensors for positioning • With Moteck L3-type minifit 6-pin plug
	CF15	<ul style="list-style-type: none"> • 24V DC motor, A4 option • With Moteck L3-type minifit 6-pin plug
Hand control	Depend on control box	<ul style="list-style-type: none"> • Powered by control box
	H3B, HZ01	<ul style="list-style-type: none"> • With Moteck Direct-cut power cable TL2 *
	HB, H2G, HZ02, HZ03, HZ04, HZ05, HZ06, HS02	<ul style="list-style-type: none"> • With Moteck Direct-cut power cable DL2 *
Accessory	TSW1 switching mode power supply	<ul style="list-style-type: none"> • With Moteck Direct-cut power cables DL2 or TL2

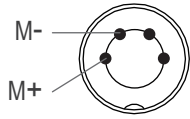
Remarks:

* Connect Direct-cut power cable to DC power supply and hand control directly, no control box.

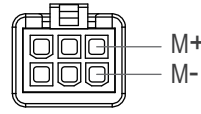
Cable Plug

With Moetck F-type or L3-type plug (Required to be connected to the control box):

- Without positioning feedback



F-type 4-pin DIN plug



L3-type Minifit 6-pin plug

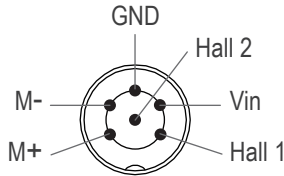


F-type plug

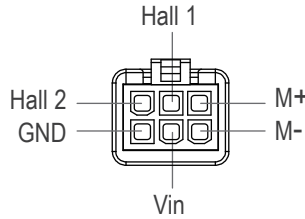


L3-type plug

- Positioning feedback with Hall effect sensors



F-type 6-pin DIN plug



L3-type Minifit 6-pin plug

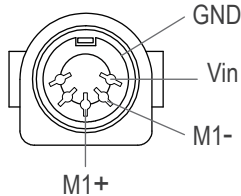
Note:

1. Connect M+ to "Vdc +" & M- to "Vdc -" of DC power to extend the actuator.
Switch the polarity of DC input to retract it.
2. The pin definition of Hall 2 is provided only when dual Hall sensors is selected.

With Direct-cut power cable DL2 or TL2 (NOT required to be connected to any control box):

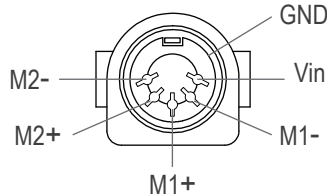
- Hand control connector: with Moteck U-type female connector

- 1 drive



5-pin connector
(Moteck pinout: C-DIN-51H)

- 2 drives



5-pin connector
(Moteck pinout: C-DIN-52H)



U-type female connector

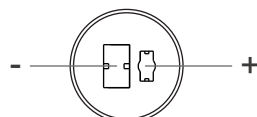
- Note:** Connect M1+ to "Vdc +" & M1- to "Vdc -" of DC power to extend the M1 actuator.
Switch the polarity of DC input to retract it. Definition of the M2 actuator is the same.

- Power plug: with Moteck R-type DIN 41529 male plug



R-type male plug

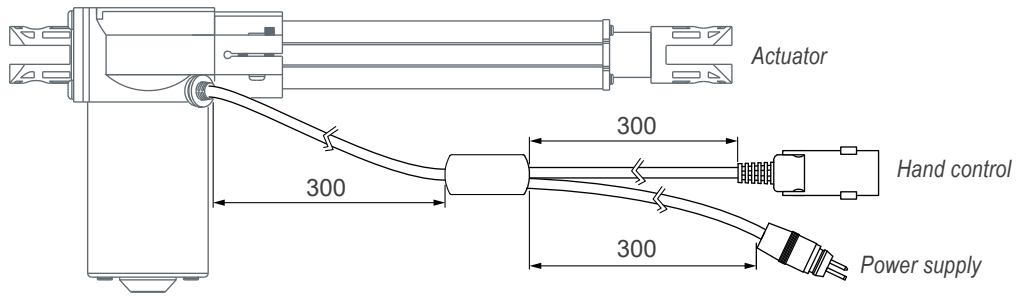
- Connector for 2nd actuator: with Moteck R-type DIN 41529 female connector (for TL2 only)



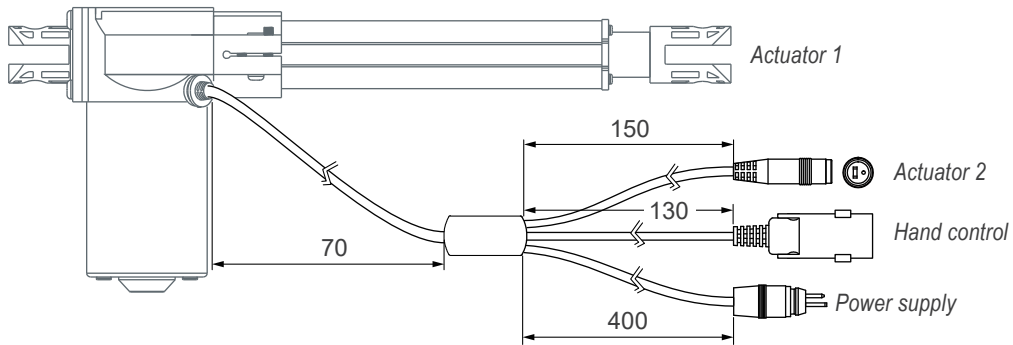
R-type female connector

- Cable length

- With Direct-cut power cable DL2



- With Direct-cut power cable TL2




Unit: mm

Cable with Flying Leads

- Basic, without positioning feedback.

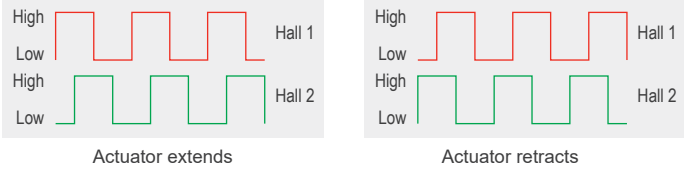
	Wire color	Definition	Descriptions
Power wires	White	DC Power	Connect white wire to "Vdc +" & black wire to "Vdc -" of DC power to extend the actuator. Switch the polarity of DC input to retract it.
	Black		

• With single Hall effect sensor for positioning

	Wire color	Definitions	Descriptions
Power wires	Blue	DC Power	Connect blue wire to “Vdc +” & brown wire to “Vdc -“ of DC power to extend the actuator. Switch the polarity of DC input to retract it.
	Brown		
Signal wires	Yellow	Vin	Voltage input range: 3.5 ~ 20V
	Red	Hall output	High= Input - 1.2V (±0.6V) Low= GND Hall signal data:
			
			Hall effect sensor resolution:
Black	GND		

Model No.	Resolution (pulses/mm)
FD60-XX-A4-XXX.XXX-CXX-HSX	10.0
FD60-XX-F4-XXX.XXX-CXX-HSX	10.0
FD60-XX-A6-XXX.XXX-CXX-HSX	6.67
FD60-XX-A8-XXX.XXX-CXX-HSX	5.0
FD60-XX-F8-XXX.XXX-CXX-HSX	5.0
FD60-XX-AG-XXX.XXX-CXX-HSX	2.50
FD60-XX-KG-XXX.XXX-CXX-HSX	1.25

• With dual Hall effect sensors for positioning

	Wire color	Definitions	Descriptions
Power wires	Blue	DC Power	Connect blue wire to “Vdc +” & brown wire to “Vdc -“ of DC power to extend the actuator. Switch the polarity of DC input to retract it.
	Brown		
Signal wires	Yellow	Vin	Voltage input range: 3.5 ~ 20V
	Red	Hall 1 output	High= Input - 1.2V (±0.6V) Low= GND Hall signal data:
			
	Green	Hall 2 output	Hall effect sensor resolution:
Black	GND		

Model No.	Resolution (pulses/mm)
FD60-XX-A4-XXX.XXX-CXX-HSX	10.0
FD60-XX-F4-XXX.XXX-CXX-HSX	10.0
FD60-XX-A6-XXX.XXX-CXX-HSX	6.67
FD60-XX-A8-XXX.XXX-CXX-HSX	5.0
FD60-XX-F8-XXX.XXX-CXX-HSX	5.0
FD60-XX-AG-XXX.XXX-CXX-HSX	2.50
FD60-XX-KG-XXX.XXX-CXX-HSX	1.25

Ordering Key

FD60- 24 - A4 - 350 - 470 - C 1 2 - HS3 - PO-BK - A	
Input voltage	12: 12V DC 24: 24V DC
Motor and Spindle type	A4: 2500rpm / 4mm pitch A6: 2500rpm / 6mm pitch A8: 2500rpm / 8mm pitch AG: 2500rpm / 16mm pitch KG: 2500rpm / 16mm pitch F4: 3300rpm / 4mm pitch F8: 3300rpm / 8mm pitch
Retracted length <i>(Refer to Page 3)</i>	XXX
Extended length <i>(Refer to Page 3)</i>	XXX
Front connector <i>(Refer to Page 4)</i>	1: Plastic 2: Drilled hole with brass bushing 3: Drilled hole 5: Metal 7: Drilled hole with nylon bushing 8: Enhanced metal
Rear connector <i>(Refer to Page 4)</i>	1: Plastic 2: Metal 5: Metal (with crank function)
Positioning feedback	Blank: Without positioning feedback HS3: Hall effect sensor x 1 HS4: Hall effect sensor x 2
Option <i>(Multiple choice is allowed)</i>	Blank: None PO: Mechanical push only extension tube BK: Mechanical brake
Cable length	0: 300mm straight 1: 1000mm straight 2: 450mm with 300mm coiled A: Direct-cut power cable DL2 <i>(Refer to Page 7)</i> B: Direct-cut power cable TL2 <i>(Refer to Page 7)</i>

Certifications

FD60 actuator is compliant with the following regulations, in terms of the essential conformity requirements of EMC Directive of 2014/30/EU.

Emission	Immunity
EN 55014-1:2006+A1:2009+A2:2011	EN 55014-2:1997+A1:2001+A2+:2008 Catagory I

Terms of Use

The user is responsible for application suitability of Moteck products. As ongoing improvement process continues, products listed on the Moteck website are subject to change without prior notice. Moteck reserves the right to terminate the sales or remove any product displayed on the website, or listed in its catalogues.