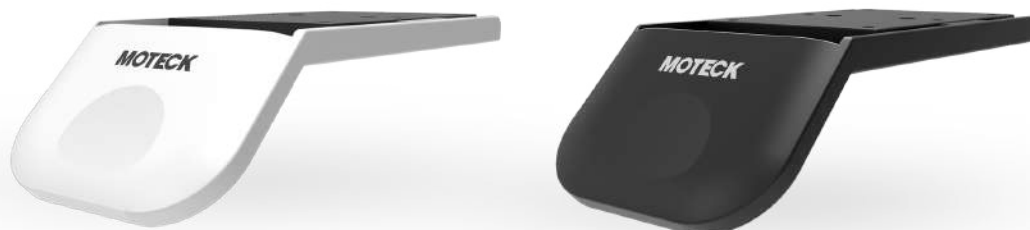


# Hand Control DP05

DP05 is a hand control with touch panel. It is designed for lifting table or height adjustable working bench. With just up and down 2 simple buttons, DP05 features it's intuitive, user-friendly and sensitive control interface. Moreover, the slim shape, good texture appearance and drawer slide mount design for user to have a wonderful experience.

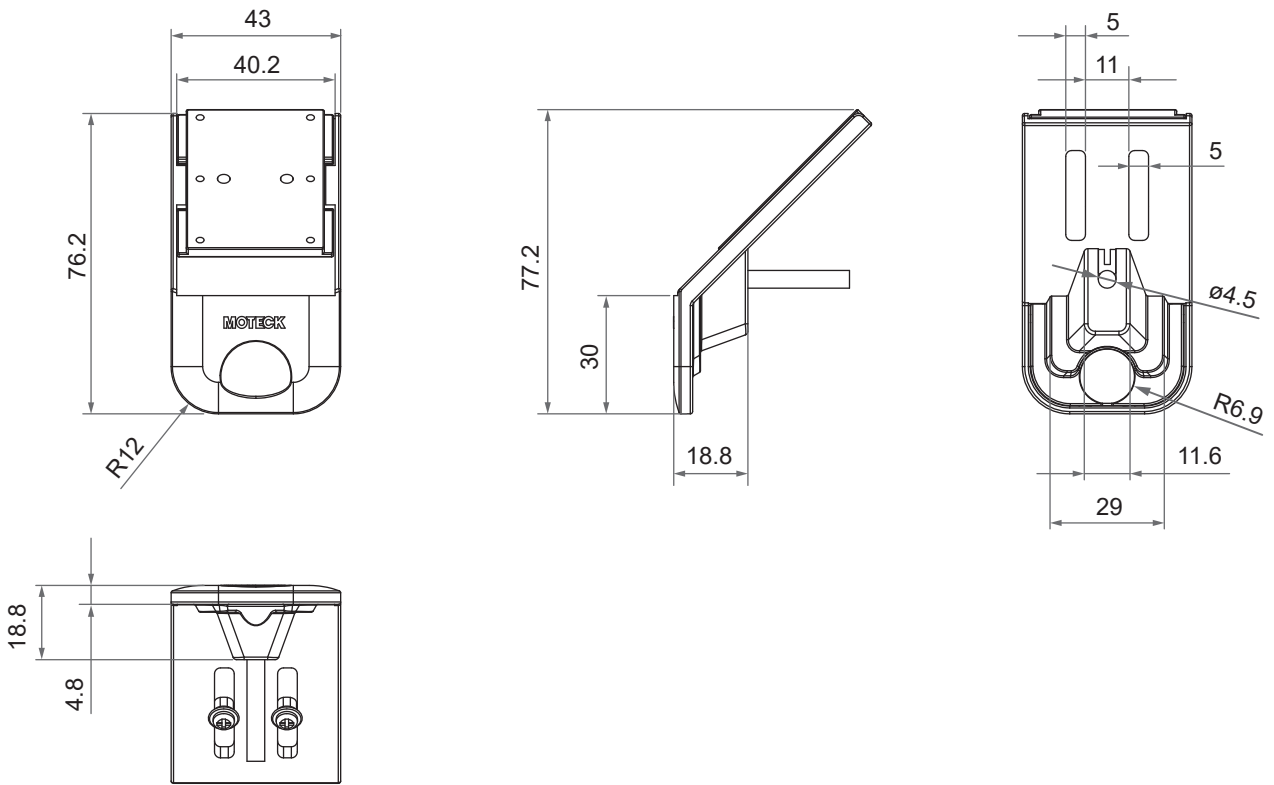


## Features

---

- Main application: Furniture
- Available number of touch buttons: 2
- Sliding mounting bracket
- Color: White
- Cable length: 1000mm straight
- Optional black housing or other customized colors

# Dimensions



Unit: mm

# Compatibility

Product	Model	DP05 spec
Control box	CF11D, CF11S, CF13	With Moteck E2-type RJ plug (Fig.1)
	CF12S	With Moteck E-type RJ plug (Fig. 2)

## Cable plug



Fig. 1 E2-type

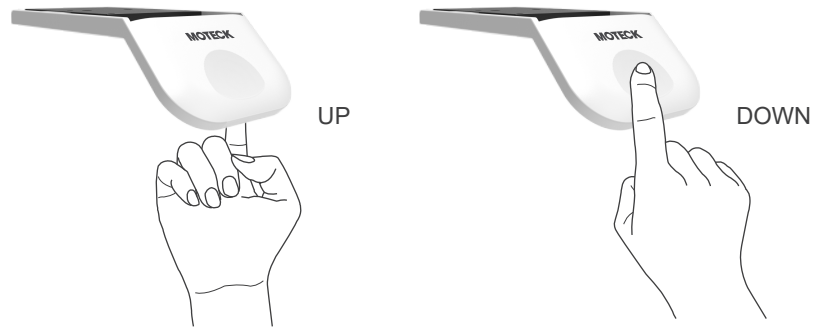


Fig. 2 E-type

# Operating Guide

---

## • Touch Panel Definition



## • Auto Stroke Learning

After the installing is done, please follow the instructions step-by-step to finish the Auto Stroke Learning process.

- Step 1: Make sure that the power is connected and there are no obstacles in the moving path of the lifting table.
- Step 2: Keep holding the top and bottom side of touch panel for 3 seconds till the lifting table start to move, then the control box will complete the Auto Stroke Learning automatically.

## • Operation

1. Keep holding the bottom side of touch panel, the actuators are extending and the table is moving up.
2. Keep holding the top side of touch panel, the actuators are retracting and the table is moving down.
3. Actuator stops while touch panel is released.

⚠ Actuators stop moving if user touches both front and back sides of control panel at the same time.

## Ordering Key

---

		<b>DP05 - B 0</b>	
<b>Color</b>	<b>W: White</b> <b>B: Black</b>		
<b>Reserved</b>	<b>0</b>		

**Terms of Use**

The user is responsible for application suitability of Moteck products. As ongoing improvement process continues, products listed on the Moteck website are subject to change without prior notice. Moteck reserves the right to terminate the sales or remove any product displayed on the website, or listed in its catalogues.