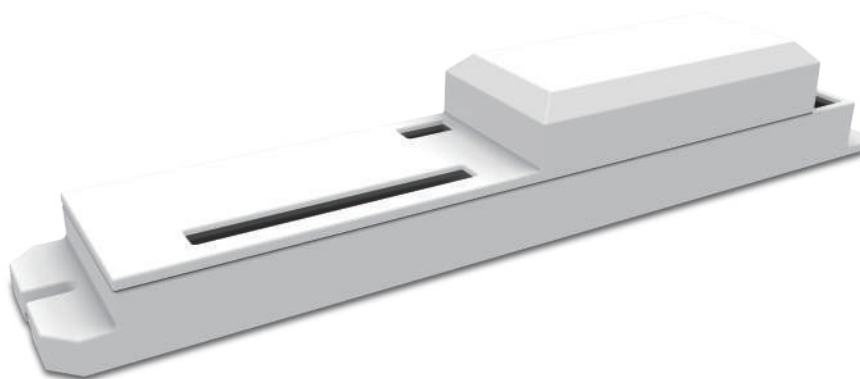


Control Box

CF16

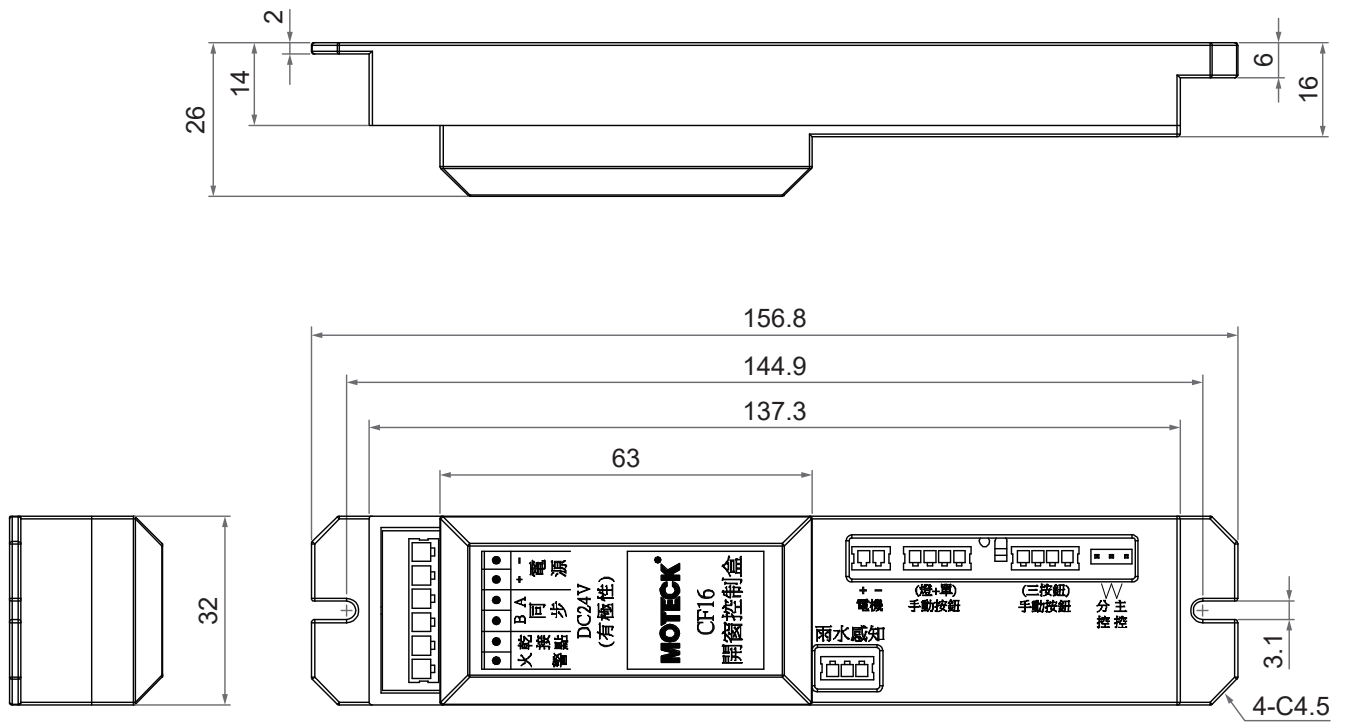
CF16 control box is designed for manufacturers of shutters and ventilation system, especially for the applications requiring fire safety and smoke exhaust. The windows can be opened mandatorily when the controller receiving the fire alarm signal, or be closed automatically after the controller received the rainy signal. The control box can be expanded in parallel, and the master controller can command all the same type controllers in the system for joint control.



Features

- Main applications: Shutters, Ventilation equipment
- Input voltage: 24V DC
- Output voltage: 24V DC
- Overload protection current: 2.4A max.
- Power supply provided by the customer
- Number of actuators: 1 output port for actuator
- Multi-controller connection is possible, and the master controller is used for joint control of all slave controllers in the system. The slave controller can still be operated on its local connected actuators.
- Duty cycle: 10%, max. 2 min. continuous operation in 20 min.
- Color: White
- Fire alarm signal to open the window or shutters mandatorily
- Rain to close the window or shutters
- Support wireless remote control, please contact Moteck sales.

Dimensions

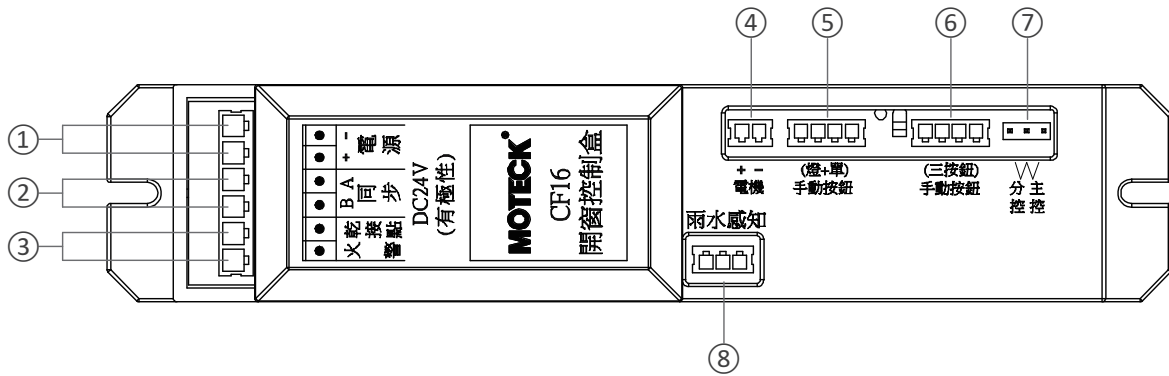


Unit: mm

Compatibility

Product	Model	Compatible requirement
Actuator	LD2, LD3, LD10, LD20, LD36, MK45	<ul style="list-style-type: none"> • 24V motor • Without positioning sensor

Connection Guide



	Interface	Comments
①	DC input	Input 24V DC. Connect red wire to “Vdc +” & black wire to “Vdc -“ of DC Power. The polarities must not be swapped.
②	Joint control	Wires of same color connected in parallel to form a system for joint control.
③	Fire alarm signal	Mandatorily open the window when receiving a fire alarm signal which comes from the user system.
④	Motor output	24V DC, 2.4A max. Following the command to swap the polarities of the DC output of the red wire and black wire. (the default is red wire with V+ & black wire with V-, for the actuator extending to open the window)
⑤	Manual button (illuminated button switch)	Connect to an illuminated button switch. (not included in this product)
⑥	Manual button (three-button switch)	Connect to a three-button switch. (not included in this product)
⑦	Master / slave selector	Use jumper to select as the master controller or the slave controller. (The default is the master controller)
⑧	Rainy signal	Connect the rain detection circuit, and the signal comes from the user system.

Ordering Key

CF16 - 24 - 24 - 0 0

Input voltage	24: 24V DC
Output voltage	24: 24V DC
Reserved	0
Reserved	0

Terms of Use

The user is responsible for application suitability of Moteck products. As ongoing improvement process continues, products listed on the Moteck website are subject to change without prior notice. Moteck reserves the right to terminate the sales or remove any product displayed on the website, or listed in its catalogues.