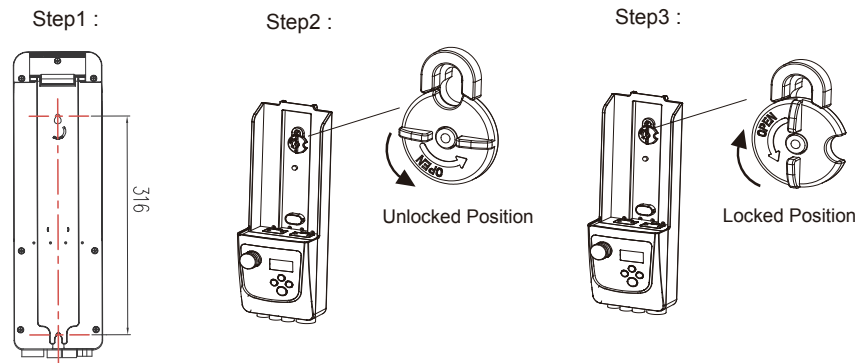




A. Installation

1. Control Box

- Step 1. Put two mounting bolts (M5 with 8mm head) onto the frame according to the drawing.
- Step 2. Turn the locker to "Unlock Position" (CCW), then mount Control Box onto the bolts of the frame.
- Step 3. Turn the locker clockwise to "Locked Position" to fix the Control Box.



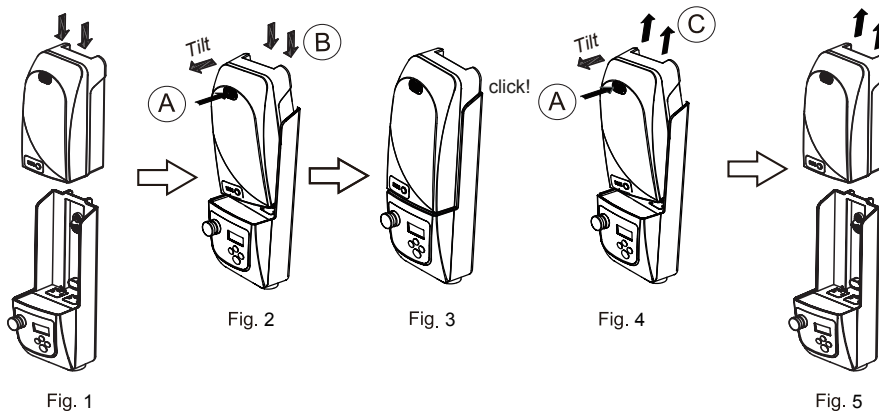
2. Battery Pack

2.1 Insert:

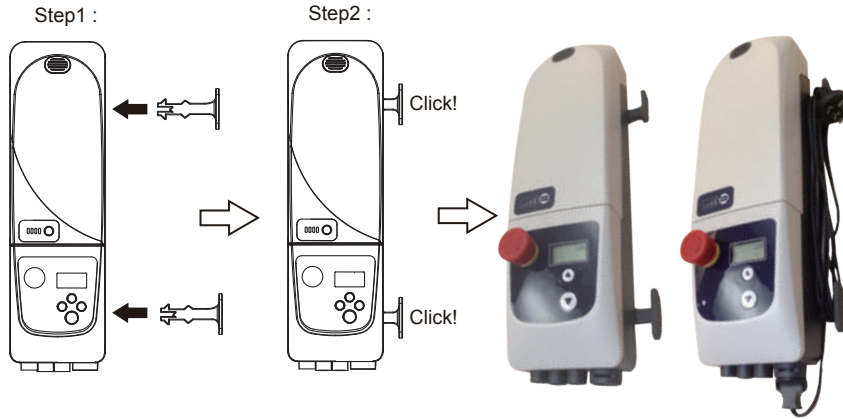
- 2.1.1 Hold the battery pack downward (Fig. 1)
- 2.1.2 Tilt the pack a little bit to get a smooth installation and keep pressing the release button (Fig. 2 (A) / (B)).
- 2.1.3 Push the pack downward till you hear "click"(Fig. 3), make sure the pack will not be pulled out by hand without pressing release button.

2.2 Remove:

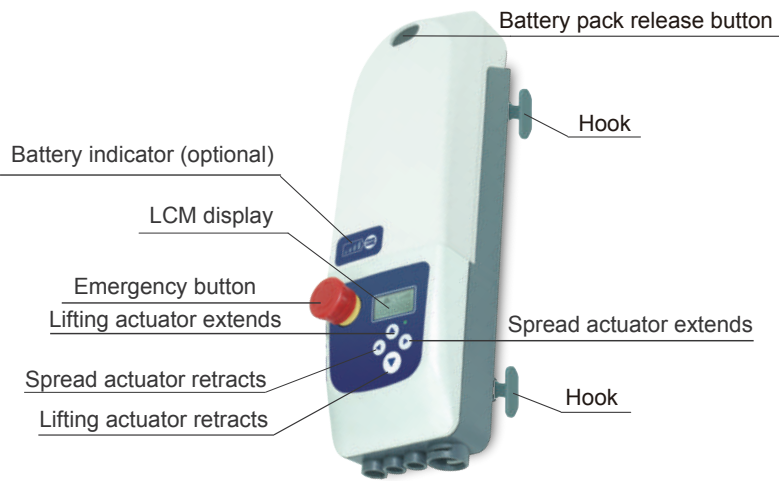
- 2.2.1 Press release button and pull the pack out upward (Fig. 4 (A) / (C)).
- 2.2.2 Tilt the pack a little bit at the beginning of pulling (Fig. 5), then pull out the battery pack.



3. Hook

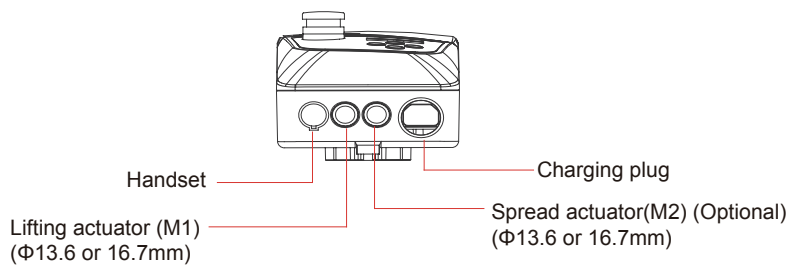


B. Interface

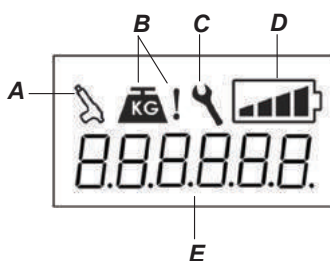


1. Connection

There are 4 connection ports as indication on following drawing.



2. LCM Display



A=Over duty on M1

B=Overload on M1 or M2

C=Remind to replace M1

D=Battery level bars

E=Error code display

M1=Lifting Actuator, M2=Spread Actuator



Battery is charged to around 100%.



Battery is charged to around 75%.



Battery is charged to around 50%.




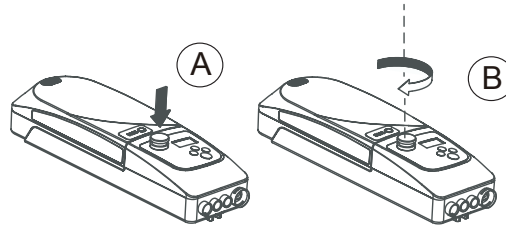
Battery is charged to around 25%.

3. Emergency Stop

Press the button firmly to make it locked with click sound. It cuts off the power and actuator stop instantly.

- i. Lock: Press the red button as shown in (A), then the button locked and the power is cut off.
- ii. Unlock: Turn the red button in clockwise, as shown in (B), then the button bounded and the power is restored.

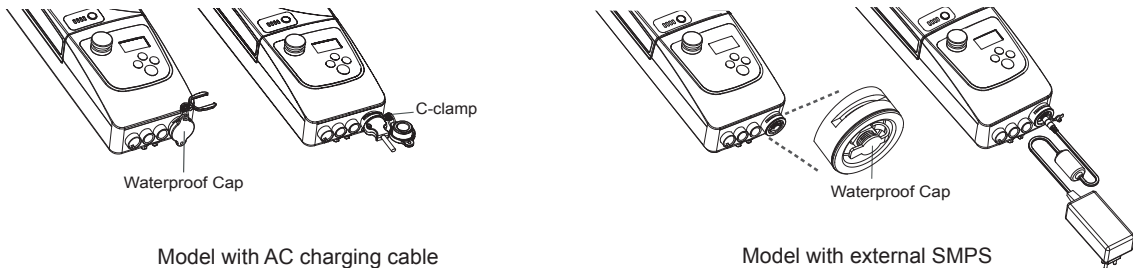
 In order to keep the batteries stay in good condition for long, we strongly recommend you to press this button when not going to use this device for a couple days.



C. Battery Charging

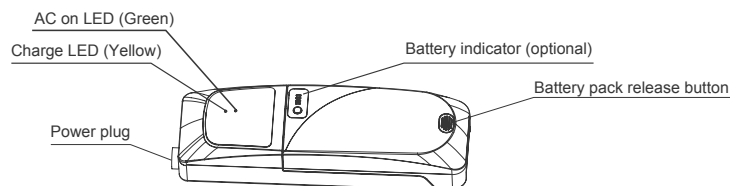
1. Charging on CBP3

- 1.1 When battery level remains only one bar on LCM display, Low Batt. icon keeps blinking or continuous 4 beeps in every 4 seconds sound, it is reminding users to charge the battery immediately.
- 1.2 Remove the cap and connect the charging cable properly.
- 1.3 If the model is with AC charging cable, insert the C-clamp to fix the cable.
- 1.4 The level bar on LCM and indicator on control panel keep blinking (1Hz) during charging, and all functions are locked.
- 1.5 The level bar and indicator keep lighting means charging is done.
- 1.6 When not charging, cover with waterproof cap properly to prevent water ingress.



2. CHP1 Charger (Optional)

- 2.1 CHP1 is an optional stand alone charger for BTP1 battery pack. User can charge additional battery pack (option) while CBP3 is on duty for use. Be noted that CHP1 equips EI type transformer and has to follow the AC voltage of the country.



CHP1 charger + battery pack

- 2.2 The Charge LED keeps blinking (1Hz) during charging, and all functions are locked. The LED indicator keeps lighting means charging is done.

D. Operation

1. Basic control function

1 means lifting actuator (M1)

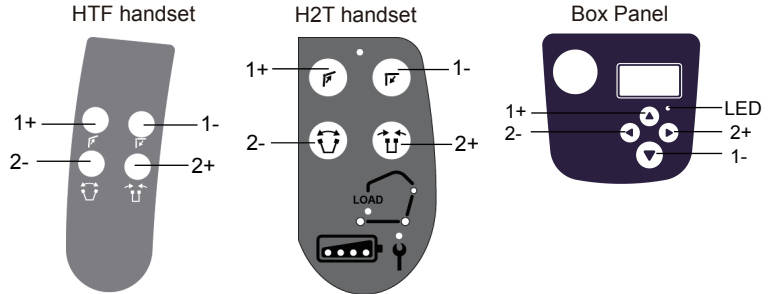
1+ : represents M1 extends

1- : represents M1 retracts

2 means spread actuator (M2)

2- : represents M2 retracts

2+ : represents M2 extends



2. Soft start & key tone

Function		Combination key	Feedback (LED blinks or sound)
soft start	ON	Press 1+, 1- buttons on HTF or H2T handset at the same time.	Blinks 4 times, no sound
	OFF		Blinks 2 times, no sound
key tone (for 2-motor model only)	ON	Press 2+, 2- buttons on handset or panel at the same time.	Blinks 2 times, beep once
	OFF		Blinks 2 times, no sound

3. Error code trouble shooting

Display	Information	Disposal
	Low battery (less than 20V DC, lifting actuator can only retract.)	Charging battery pack at once.
	Lifting actuator over duty (after 4mins continuous lifting)	Stop operation for a while. The error message will gone automatically after sufficient rest.
	Lifting actuator over load.	Find out and remove obstruction or improper load.
	Spread actuator over load.	Please find out the cause. (Let the actuator moves in reverse direction over 2 seconds)
	Cumulative running time over 600K seconds on lifting actuator.	Call agency to replace the actuator.