

Control Box

CBP2

CBP2 control box is powered by battery pack, which is specially designed for patient hoists or stand-up lifts. It's built with soft-start / stop function to provide a safer and more comfortable user experience. The LCD display shows the battery status and some warning signs, such as low battery, over-duty, overload, and reminder to replace lifting actuator. Moreover, CBP2 provides different charger types, including internal transformer and internal / external SMPS.

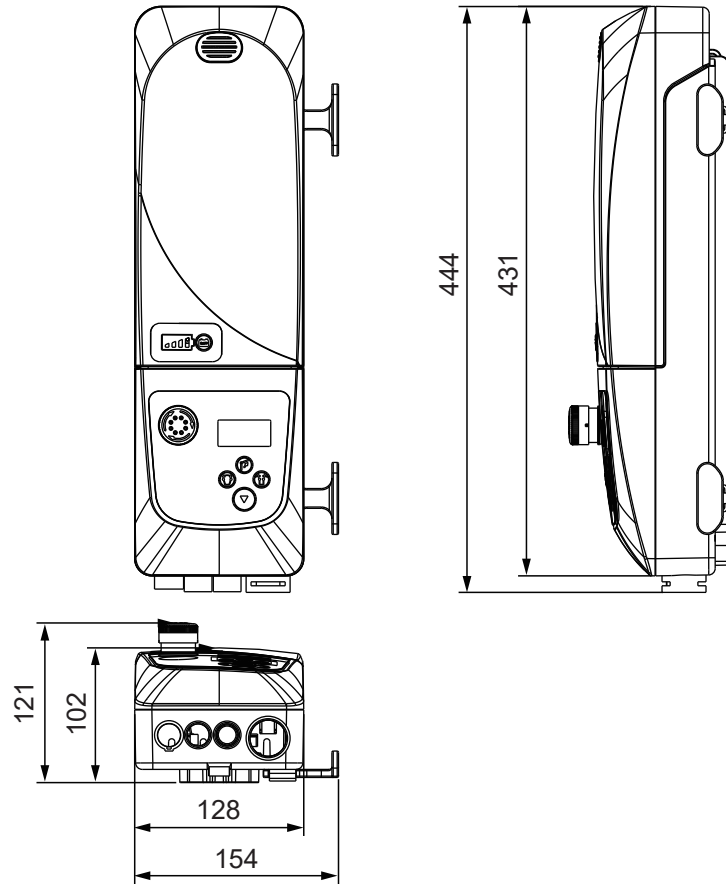


Features and Options

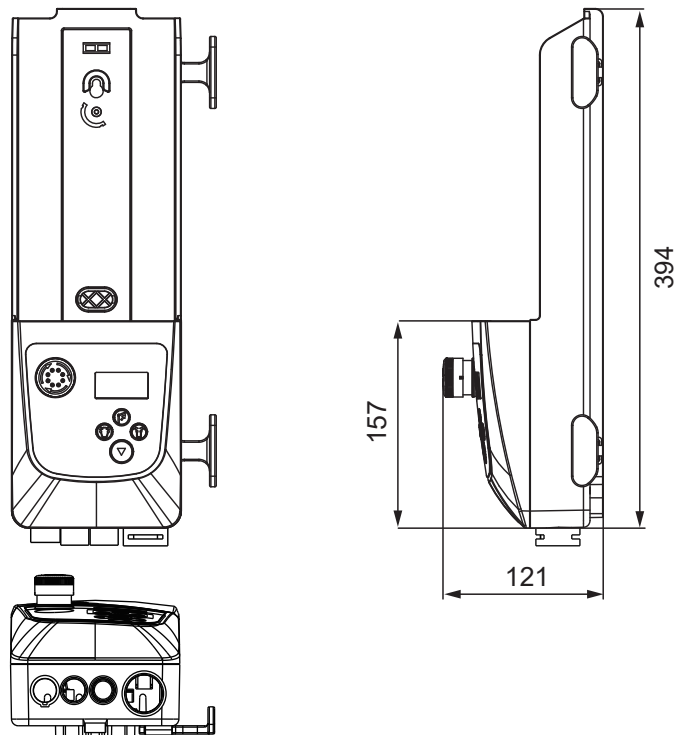
- Main applications: Medical, home care
- Input voltage: 100 ~ 240V AC, 50/60Hz
- Output voltage: 24V DC
- Max. number of actuators: 2 channels
- Max. number of controls: 1 channel
- Output protection current (standard): 7A (M1, Lifting actuator), 3A (M2, U base legs spreading actuator)
- Power supply: 24V (internal SMPS charger) or 29V/1A (external SMPS charger)
- Duty cycle: 10%, max. 2 min continuous operation in 20 min.
- IP Protection level: IP66 (internal SMPS charger) / IPX4 (external SMPS charger)
- Color: RAL 7035 (front cover), RAL 7016 (back cover)
- Power cord length: 3000 mm (internal SMPS charger) / 2800 mm (external SMPS charger)
- Emergency stop button
- LCD display shows status info or error code
- Certified: CE Marking, EN IEC 60601-1, EN IEC 60601-1-2
- Optional LED indication of charging and usage status
- Optional lead-acid battery (5.0Ah) inside
- Charge with CBP2 control box, or charge with CHP1 battery charger (optional)

Dimensions

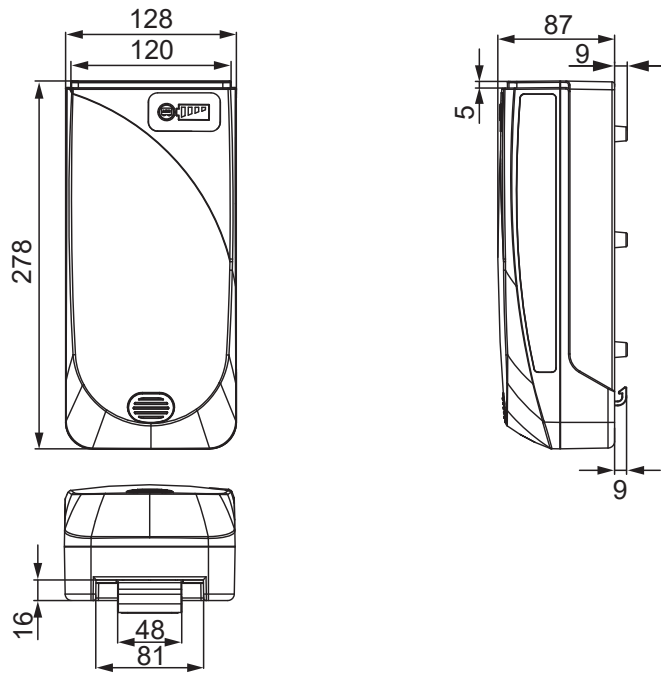
• CBP2 Control Box+BTP1 Battery Pack



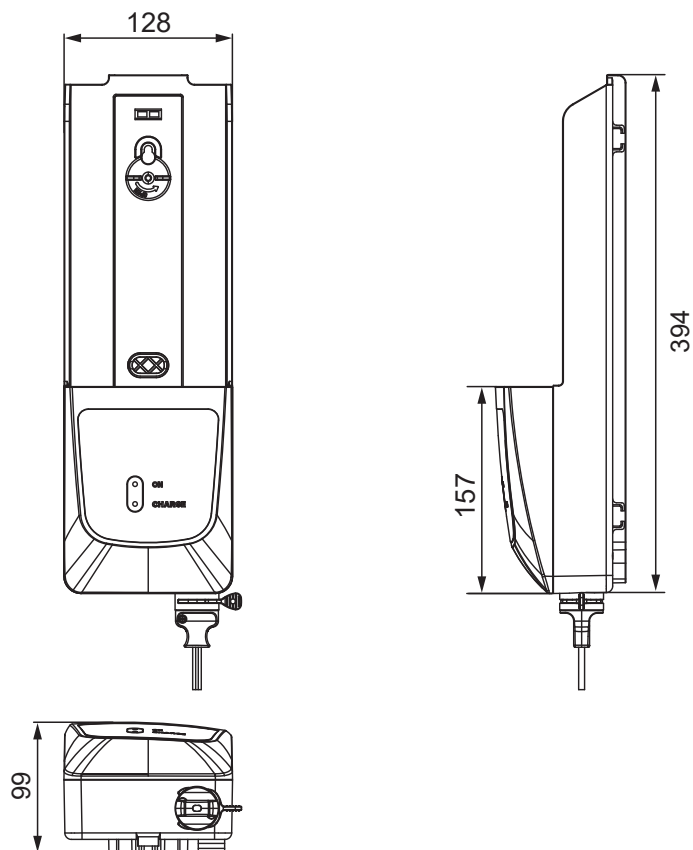
• CBP2 Control Box



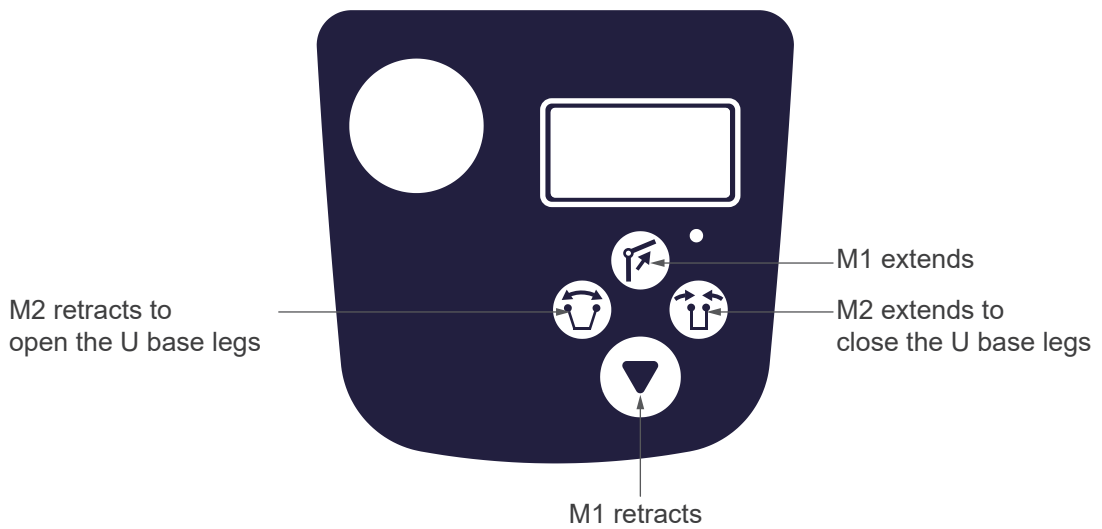
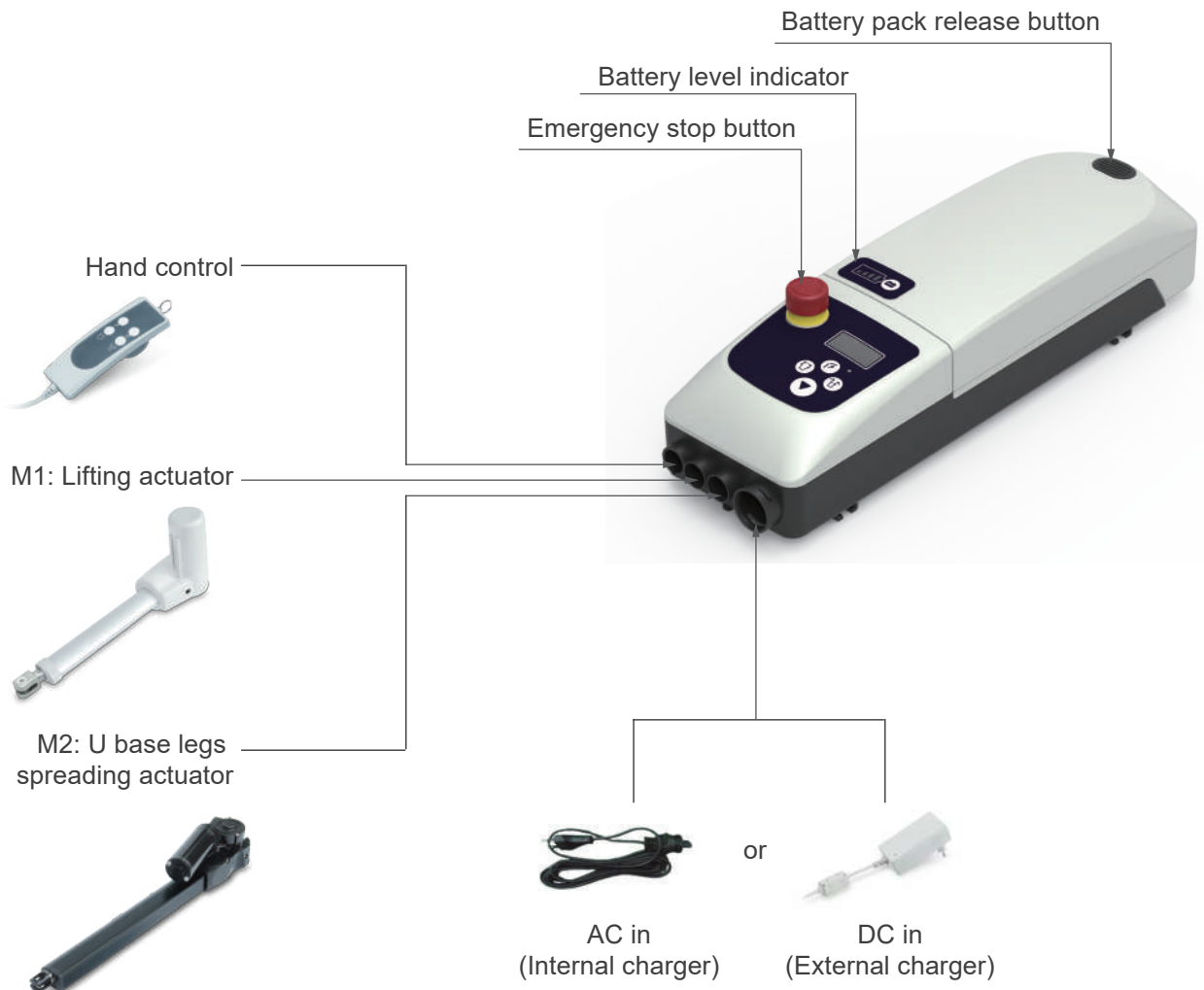
• BTP1 Battery Pack



• CHP1 Battery charger



I/O Introduction



Compatibility

Product	Model	Compatible requirement
Actuator	Lifting actuator: MD60, MD80, MD82, MD100, MD120	- Phone jack(ø6.35mm) with Moteck J1-type or J2-type plug.
	U base legs spreading actuator: MD50	
Hand control	HTF, HT	- Moteck control category P2 - With 5-pin Moteck H-type DIN plug
Accessory	BTP1 Battery pack (Fig.1)	
	CHP1 Battery charger (Fig.2)	



(Fig.1)

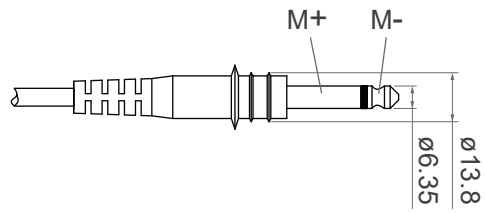


(Fig.2)

Socket

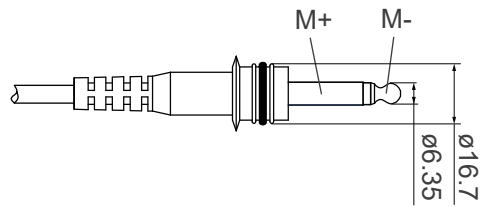
- **Actuator socket**

- Moteck J1-type phone jack



J1-type

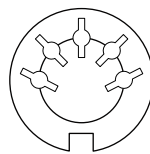
- Moteck J2-type phone jack



J2-type

- **Hand control socket**

- Moteck H-type DIN plug



5-pin socket



H-type

Ordering Key

• CBP2 Control Box

CBP2- ISW - 24 - 2 - P1

Input voltage	ISW: Internal SMPS TSW: External SMPS
Output voltage	24: 24V DC
Number of actuator	1: 1 channel 2: 2 channels
Actuator socket	P1: Moteck J1-type (ø13.6 mm) P2: Moteck J2-type (ø16.7 mm)

• BTP1 Battery Pack

BTP1- B0 - V0

Battery pack	B0 : Without lead-acid battery inside B1 : With lead-acid battery inside (12V/5Ah x 2 pcs)
Battery level indicator	V0 : Without LED indicator V1 : With LED indicator