

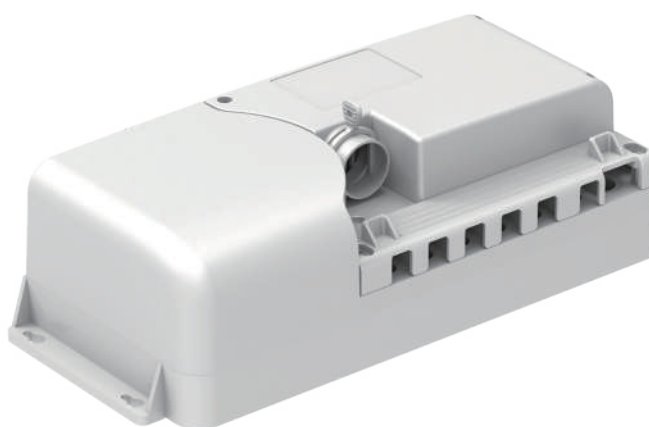
# Control Box

## CB5P-M

CB5P-M is a control box designed with Moteck's proprietary Bus protocol and can control up to 5 actuators.

CB5P-M contains lead-acid rechargeable batteries, which can still operate actuators in a short time when AC power supply is interrupted.

It is also equipped with a button, which can completely cut off the battery before it is not used for a long time to extend the service life of the battery. It is waterproof and can be used in medical, home care and other applications.



### Features and Option

---

**Main applications:** Home care, medical

**Standard features:**

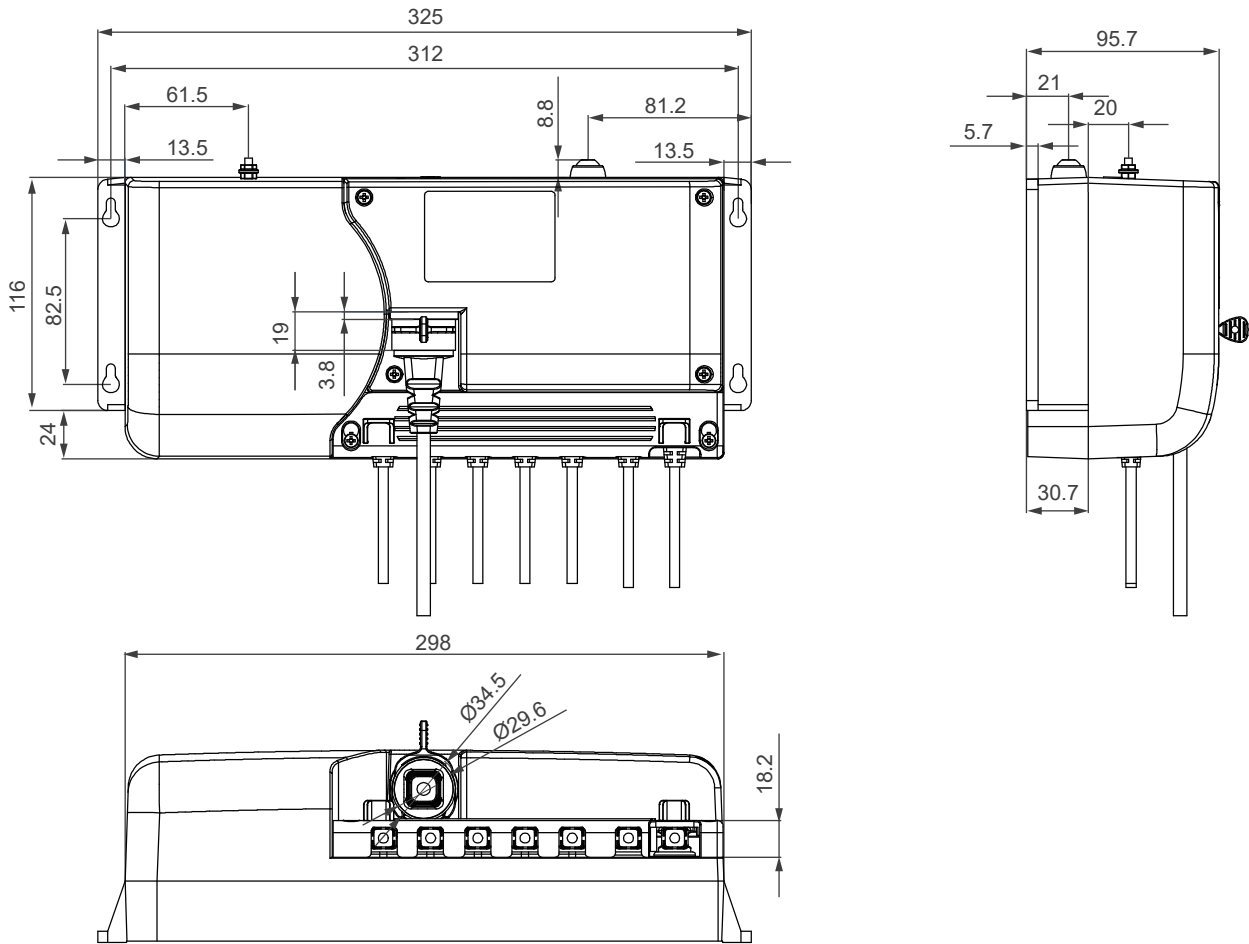
- Input: 100 ~ 240V AC, 50/60Hz (SMPS)
- Output: 32V DC, 5A@110V or 8A@240V
- Max. number of actuators: 5 channels
- Max. number of controls: 2 channels
- Overload protection current: 5A per channel
- "Reset" button: to power off the batteries.
- Battery level detection function (Need to match a hand control or control panel with indicator)
- Duty cycle: 10%, maximum 2 minutes continuous use.
- Ambient operation temperature: +5°C~+40°C
- IP Protection level: IPX5
- Protection class: Class II. Class I application is possible for customers, please contact Moteck sales.
- Color: Light gray RAL 7035
- Certified: CE Marking, EN 60601-1-2, IEC 60601-1-2, EN IEC 61000-3-2, EN 61000-3-3

**Option:**

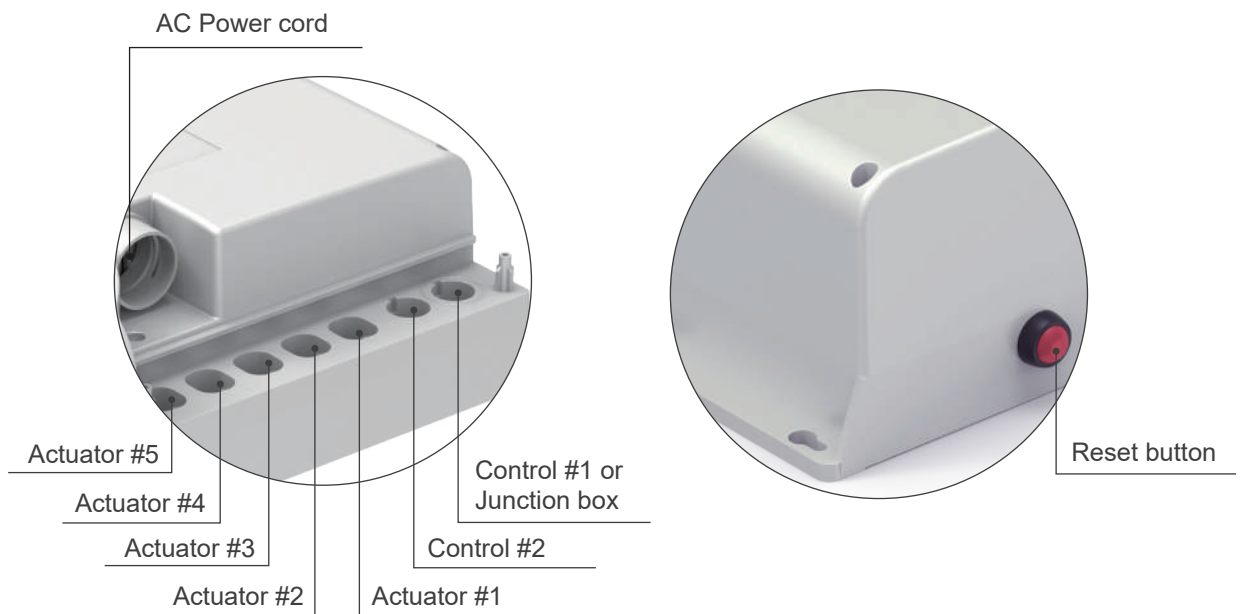
- With lead-acid batteries (1.3Ah )

# Dimensions

Unit: mm



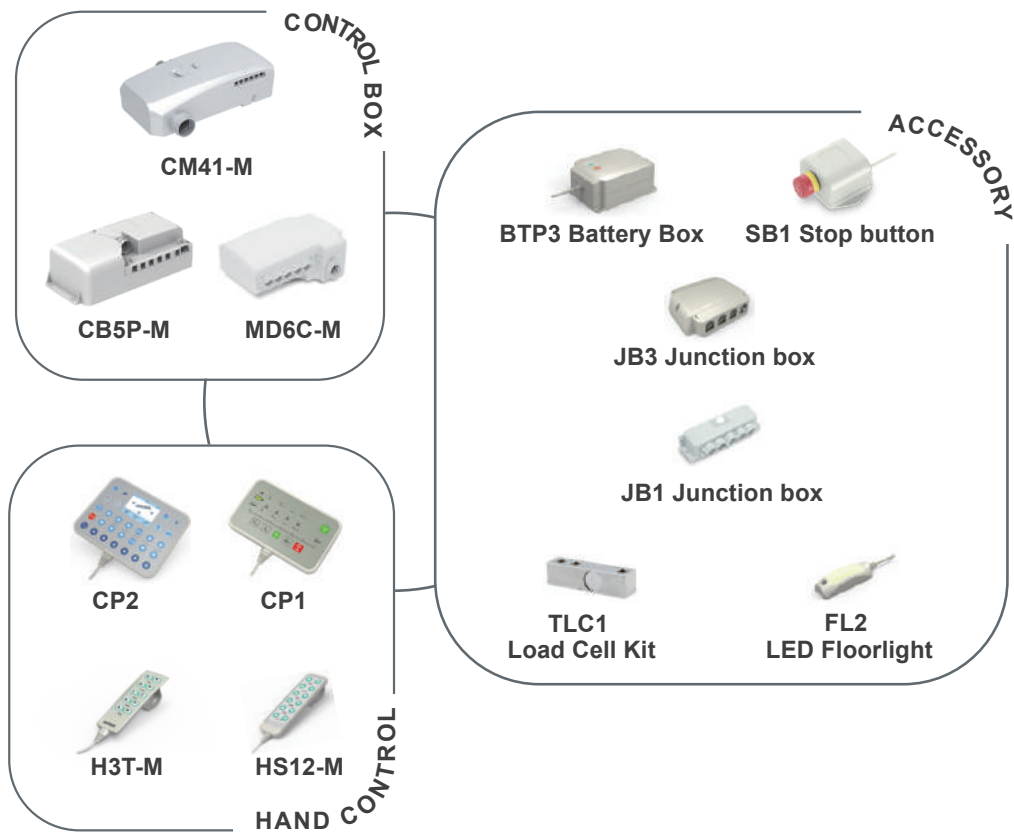
# I/O Introduction



## Compatibility

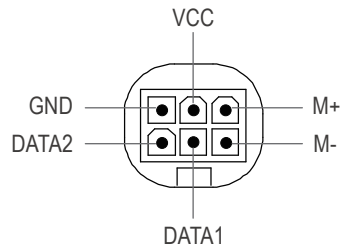
Product	Model	Compatible requirement
<b>Actuator</b>	MK31, MK31-QR, MD60, MD66, MD21, MD82	• Moteck LR-type minifit 6-pin plug
<b>Lifting Column</b>	DLC1, DLC2	• Moteck LR-type minifit 6-pin plug
<b>Hand control</b>	H3T-M, HS12-M, CP1, CP2	• Moteck V-type 7-pin DIN plug
<b>Junction box</b>	JB1, JB3	• Moteck V-type 7-pin DIN plug
<b>Stop button</b>	SB1	

- Moteck Bus family



## Socket

- Actuator, Lifting Column socket

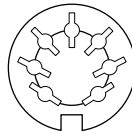


LR-type minifit 6-pin socket



LR-type

- Hand Control, Accessory socket

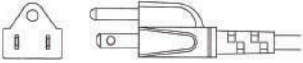
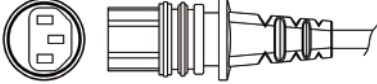
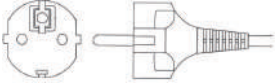
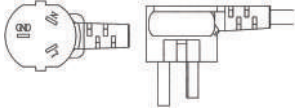


V-type 7-pin DIN socket



V-type

## AC Power Cord

Plug type	Note
US 3-pin plug 	• AC power cord length: 3000mm straight 
CEE 7/17(VDE 3P) plug 	
CHINA CCC 3-pin plug 	

## Ordering Key

CB5P - M A - 32 D - 1 3 0 0 5 3

<b>Function</b>	<b>A:</b> Standard version
<b>Output voltage</b>	<b>32:</b> 32V DC
<b>Power supply</b>	<b>D:</b> Internal SMPS, 32V DC/8A
<b>Number of control</b>	<b>1:</b> 1 control <b>2:</b> 2 controls
<b>Number of actuators</b>	<b>3:</b> 3 actuators <b>4:</b> 4 actuators <b>5:</b> 5 actuators
<b>Reserved</b>	<b>0:</b> No meaning
<b>Battery</b>	<b>0:</b> None <b>B:</b> Including Lead-acid batteries (1.3AH/12V DC x 2)
<b>IP Protection level</b>	<b>5:</b> IPX5
<b>AC Power cord length</b>	<b>3:</b> 3000mm straight <b>0:</b> Without AC Power cord

### Terms of Use

The user is responsible for the suitability of MOTECK products, and the products listed on the MOTECK website are subject to change without notice. MOTECK reserves the right to terminate sales or delete any products displayed on the website or listed in its catalog.