

# Gate Opener System Optional accessories

There are various optional accessories designed for Moteck gate opener systems available for customers to choose. Welcome to select and expand the functions of your gate opener systems.



**ANT1**  
Additional Antenna



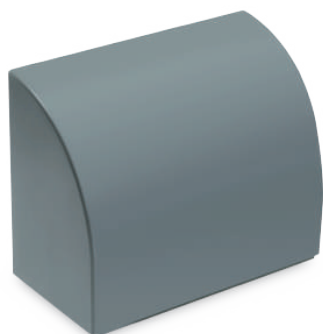
**RKP2**  
Wireless Keypad



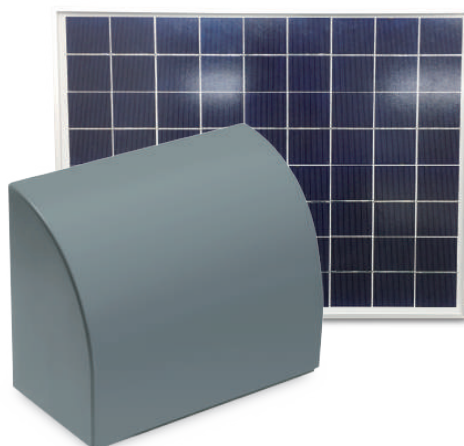
**ESW1**  
Key Switch



**ARCV**  
Additional Receiver



**BKT3**  
Battery Box



**BKT5**  
Solar Kit



**LMC1**  
Garden Lamp Control

## Wireless Keypad

---

- Frequency: 433.92MHz with Rolling code
- Battery: 9V alkaline battery
- Operating temperature: -20°C ~ +60°C



**RKP2**

## Key Switch

---

- Number of switches: 2
- Number of keys: 3
- Operating temperature: -20°C ~ +60°C
- Compatible with Moteck gate opener control box as a wired security switch



**ESW1**

## Additional Antenna

---

- Frequency: 433.92 MHz
- Reliable RF antenna with chromate treatment for weather resistance
- Supplied with 2m coaxial cable
- Increase the range of remote control up to 30m



**ANT1**

## Garden Lamp Control

---

- Frequency: 433.92 MHz
- Input: 230V AC ~/50Hz
- Standby consumption: 15mA
- Working in 2 separate channels
- Memory positions: 30 max. for 2 channels
- Rolling code enabled or disabled
- 3 operation modes
- Dimensions: 115(L) x 115(W) x 55(H) mm
- Weight: 337g



**LMC1**

## Additional Receiver

---

- Frequency: 433.92 MHz
- Input: 12V DC
- Standby current: 15mA
- Working in 2 separate channels
- Memory positions: 30 max. for 2 channels
- Rolling code inspection
- Partial code deletion or replacement
- Dimensions: 132(L) x 30(W) x 67(H) mm
- Weight: 105g



**ARCV**

## Battery Box

---

- Battery: Including a 12V/10Ah rechargeable lead-acid battery
- Dimensions: 195(L) x 114(W) x 149(H) mm

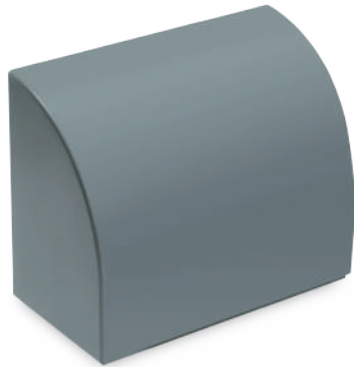


**BKT3**

## Solar Kit

---

- Compatible with 12V or 24V system
- 20W/18V Solar panel
- Dimensions: 195(L) x 114(W) x 149(H) mm



**BKT5**



---

### Terms of Use

The user is responsible for application suitability of Moteck products. As ongoing improvement process continues, products listed on the Moteck website are subject to change without prior notice. Moteck reserves the right to terminate the sales or remove any product displayed on the website, or listed in its catalogues.