

AGRICULTURAL & INDUSTRIAL APPLICATIONS

MOTECK[®]
MOTORIZE OUR WORLD



MOTECK[®]
MOTORIZE OUR WORLD

About Moteck

Drawing on a heritage of more than 20 years in designing and producing reliable electromotive drive and control system, Moteck® products and solutions are comprehensively adopted by well-known customers worldwide. Started business in satellite TV antenna motorization, we have been successfully expanding our business to market sectors in medical, homecare, furniture, industrial automation, mobility off highway, solar tracker, and gate opener.

The quality management system with ISO 9001 certified is solid executed for the whole organization. All products are compliant with international standards, such as CE, UL, PSE and RoHS, according to different countries and industrial requirements. With strong capability of manufacturing, product development and system integration, we can meet specific customization needs. Now we are strategic partner of many customers in US, Europe, Japan, and China, to design whole electromotive drive system for their products.



Advantage

- Satisfied quality to price ratio
- High creativity and flexibility
- Customization available for diversified specification
- Harmonious integration of electronic and mechanical engineering
- Professional global operations
- Manufacturing capabilities with large scale capacity



Location

Head Office: Taipei, Taiwan

Sales Office: Clermont-Ferrand, France / Manheim, PA, USA / Guangdong, China

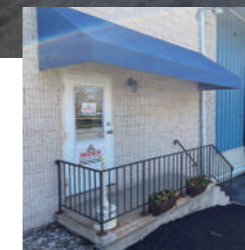
Factory: Taoyuan, Taiwan / Suzhou, China



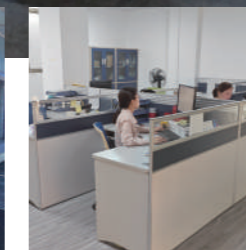
Taipei, Taiwan



Clermont-Ferrand, France



Manheim, PA, USA



Guangdong, China



Taoyuan, Taiwan



Suzhou, China

Agricultural Tractors



Actuator



MK35



ID10



ID10K



ID10G



ID10P



ID12

Loader Attachment



Actuator



MK7L



MK35

Actuator



MD56



MD57

Snow / Mist Cannon



Actuator



LD20



MK35

Snow Blower



Actuator



LD36



LD20

Pedestal Lifter



Actuator



LD20



MK32

Ventilation System



Actuator



LD3



MK45

Signal Board



Actuator



ID10



ID10K

Automated Guided Vehicle



Actuator



MK35



ID10P



MK35

Input: 12 / 24V DC
Max. Push / Pull Load: 10000N
Max. Static Load: 18000N (push)
Max. Speed at No Load: 63mm/s
Spindle Type: Ball screw
Stroke: 100~1000mm
Duty Cycle: 15~25%
Salt Spray Test: 500 hours

IP Level: IP66 (dynamic), IP67, IP69K
Min. Installation Dimension: 190mm+Stroke
Built-in control board
Various control options (DXL / SXL / J00):
 DC control based / Signal control based / J1939 CAN bus
Preset limit switches
Soft start / stop (SXL / J00)
Over-current protection
Stainless steel extension tube
Manual drive capable by an hexagon socket wrench
Option:
 Hall-effect sensor
 Potentiometer (POT)
 Synchronous control
 External adjustable reed sensor (NO-type)



Model No.	Max. Push / Pull Load (N)	Duty Cycle	Typical Speed (mm/s)		Typical Current (A)			
			No Load	Full Load	No Load		Full Load	
					12V	24V	12V	24V
MK35-XX-G5B-05...	1700	25%	63	52	3.0	1.5	17	8.5
MK35-XX-G5B-10...	2600	25%	38	30	3.0	1.5	16	8.0
MK35-XX-G5B-15...	4500	25%	23	18	3.0	1.5	17	8.5
MK35-XX-G5B-20...	6800	25%	17.5	13.5	3.0	1.5	18	9.0
MK35-XX-G5B-30...	10000	15%	11	8.5	3.0	1.5	17	8.5

MK35L

Brushless DC Motor
Input: 48V
Max. Push / Pull Load: 10000N
Max. Static Load: 18000N (push)
Constant Speed: 25mm/s
Spindle Type: Ball screw
Stroke: 100~500mm
Duty Cycle: 15%
Salt Spray Test: 500 hours

IP Level: IP66 (dynamic), IPX7, IPX9K
Min. Installation Dimension: 220mm+Stroke
Built-in control board
Various control options (SXL / J00):
 Signal control based / J1939 CAN bus
Preset limit switches
Soft start / stop
Over current / voltage / temperature protection
Stainless steel extension tube
Manual drive capable by an hexagon socket wrench
Option:
 Hall-effect sensor
 Potentiometer (POT)



Model No.	Max. Push / Pull Load (N)	Typical Speed (mm/s)		Typical Current (A)	
		No Load	Full Load	No Load	Full Load
MK35L	10000	25	25	1.0	9.0



IA5

Input: 115 / 230V AC
Max. Push / Pull Load:
 3500N (ACME screw)
 7000N (Ball screw)
Max. Static Load:
 4500N (ACME screw)
 13600N (Ball Screw)
Max. Speed at No Load: 52.8mm/s
Spindle Type: ACME screw or Ball screw
Stroke:
 102 / 153 / 203 / 254 / 305 / 457 / 610mm
Duty Cycle: 25%

IP Level: IP54
Min. Installation Dimension: 160mm+Stroke
Overload protection by clutch
Extension tube material:
 Iron (ACME screw)
 Stainless steel (Ball screw)
Option:
 Potentiometer (POT)
 Built-in limit switches
 IP level: IP65
Compatible Product:
 MB30 mounting bracket



Model No.	Max. Push / Pull Load (N)	Typical Speed (mm/s)				Typical Current (A)			
		No Load		Full Load		No Load		Full Load	
		115V	230V	115V	230V	115V	230V	115V	230V
IA5-XXX-10-A...	1500	26.5	21.8	22.9	17.5	2.8	1.8	3.1	1.8
IA5-XXX-20-A...	2500	13.1	10.8	11.8	9.3	2.7	1.9	2.7	1.9
IA5-XXX-40-A...	3500	6.6	5.4	6.0	4.9	2.7	1.9	2.7	1.9
IA5-XXX-05-B...	2500	52.8	43.5	40.8	29.0	2.8	1.8	3.5	1.8
IA5-XXX-10-B...	3500	26.5	21.8	22.9	17.5	2.8	1.8	3.1	1.8
IA5-XXX-20-B...	4500	13.1	10.8	11.8	9.3	2.7	1.9	2.7	1.9
IA5-XXX-30-B...	6000	8.7	7.2	7.9	6.3	2.7	1.9	2.7	1.9
IA5-XXX-40-B...	7000	6.6	5.4	6.0	4.9	2.7	1.9	2.7	1.9

MK7L

Brushless DC Motor
Input: 48V
Max. Push / Pull Load: 10000N
Max. Static Load: 18000N
Constant Speed: 25mm/s
Spindle Type: Ball screw
Stroke: 203 / 254 / 305mm
Duty Cycle: 15%
Salt Spray Test: 250 hours

IP Level: IP66, IP67, IP69K
Min. Installation Dimension: 298mm+Stroke
Preset limit switches
Built-in brushless motor drive board
Built-in electronic protection circuit board
Stainless steel extension tube
Compatible Product:
 MB30 mounting bracket



Model No.	Max. Push / Pull Load (N)	Typical Speed (mm/s)		Typical Current (A)	
		No Load	Full Load	No Load	Full Load
MK7L	10000	25	25	0.6	8.7

ID10

Input: 12 / 24 / 48V DC
Max. Push / Pull Load:
 3500N (ACME screw)
 7000N (Ball screw)
Max. Static Load:
 7500N (ACME screw)
 13600N (Ball screw)
Max. Speed at No Load: 72.1mm/s
Spindle Type: ACME screw or Ball screw
Stroke:
 102 / 153 / 203 / 254 / 305 / 457 / 610mm
Duty Cycle: 25%

IP Level: IP54
Min. Installation Dimension:
 160mm+Stroke (ACME screw)
 200mm+Stroke (Ball screw)
Overload protection by clutch
Extension tube material:
 Galvanized steel (ACME screw)
 Stainless steel (Ball screw)
Option:
 Hall-effect sensor
 Potentiometer (POT)
 Built-in limit switches
 IP level: IP65, IP66, IP69K
Compatible Product:
 MB30 mounting bracket



Model No.	Max. Push / Pull Load (N)	Typical Speed (mm/s)						Typical Current (A)					
		No Load			Full Load			No Load			Full Load		
		12V	24V	48V	12V	24V	48V	12V	24V	48V	12V	24V	48V
ID10-XX-G5A-10...	1500	33.5	33.5	36.5	26.7	26.7	29.1	2.6	1.6	1.4	17.6	8.8	3.6
ID10-XX-G5A-20...	2500	16.8	16.8	17.8	14.3	14.3	15.3	2.6	1.6	0.8	13.2	6.6	2.4
ID10-XX-G5A-40...	3500	8.4	8.4	8.6	7.3	7.3	7.8	2.6	1.6	0.5	11.0	5.5	2.1
ID10-XX-G5B-05...	2500	67.1	67.1	72.1	47.2	47.2	57.5	3.4	2.6	0.5	26.4	13.2	5.5
ID10-XX-G5B-10...	3500	33.5	33.5	36.5	26.7	26.7	29.1	2.6	1.6	0.5	17.6	8.6	3.6
ID10-XX-G5B-20...	4500	16.8	16.8	17.8	14.3	14.3	15.3	2.6	1.6	0.5	13.2	6.6	2.4
ID10-XX-G5B-30...	6000	11.2	11.2	11.7	9.8	9.8	10.3	2.6	1.6	0.5	12.1	6.1	2.5
ID10-XX-G5B-40...	7000	8.4	8.4	8.6	7.4	7.4	7.8	2.6	1.6	0.5	11.0	5.5	2.1

ID10P

Input: 24V DC
Max. Push / Pull Load: 12500N
Max. Static Load: 18000N
Max. Speed at No Load: 20mm/s
Spindle Type: Ball screw
Stroke: 102 / 203 / 305mm
Duty Cycle: 10%
Salt Spray Test: 250 hours

IP Level: IP66, IP67, IP69K
Min. Installation Dimension: 297mm+Stroke
Overload protection by clutch
Preset limit switches
Stainless steel extension tube
Option:
 Potentiometer (POT)
Compatible Product:
 MB30 mounting bracket



Model No.	Max. Push / Pull Load (N)	Typical Speed (mm/s)		Typical Current (A)	
		No Load	Full Load	No Load	Full Load
ID10P-24-20B...	9000	20	15.5	1.8	11.0
ID10P-24-30B...	12500	14	10.5	1.5	11.5



ID10K

Input: 12 / 24V DC
Max. Push / Pull Load: 7000N
Max. Static Load: 13600N
Max. Speed at No Load: 14mm/s
Spindle Type: ACME screw
Stroke: 102 / 153 / 203 / 254 / 305 / 457 / 610mm
Duty Cycle: 10%

IP Level: IP65
Min. Installation Dimension: 160mm+Stroke
Overload protection by clutch
Galvanized steel extension tube
Option:
 Hall-effect sensor
 Potentiometer (POT)
 Built-in limit switches
 IP level: IP66, IP69K
Compatible Product:
 MB30 mounting bracket



Model No.	Max. Push / Pull Load (N)	Typical Speed (mm/s)			Typical Current (A)			
		No Load		Full Load	No Load		Full Load	
		12V	24V		12V	24V		
ID10K-XX-G4A-20...	5600	14	10.5	2	1	20	10	
ID10K-XX-G4A-40...	7000	7	5.5	2	1	14	7	

ID11

Input: 12 / 24 / 48V DC
Max. Push / Pull Load:
 3500N (ACME screw)
 7000N (Ball screw)
Max. Static Load:
 4500N (ACME screw)
 13600N (Ball screw)
Max. Speed at No Load: 36.5mm/s
Spindle Type: ACME screw or Ball screw
Stroke:
 102 / 153 / 203 / 254 / 305 / 457 / 610mm
Duty Cycle: 25%

IP Level: IP54
Min. Installation Dimension: 217mm+Stroke
Extension Tube Material:
 Iron (ACME screw) / stainless steel (Ball screw)
Overload protection by clutch
Preset limit switches
Bottom cable outlet
Option:
 IP level: IP65
 Side cable outlet
Compatible Product:
 MB30 mounting bracket



Model No.	Max. Push / Pull Load (N)	Typical Speed (mm/s)						Typical Current (A)					
		No Load			Full Load			No Load			Full Load		
		12V	24V	48V	12V	24V	48V	12V	24V	48V	12V	24V	48V
ID11-XX-10-A...	1500	33.5	33.5	36.5	26.7	26.7	29.1	2.6	1.6	1.4	17.6	8.8	3.6
ID11-XX-20-A...	2500	16.8	16.8	17.8	14.3	14.3	15.3	2.6	1.6	0.8	13.2	6.6	2.4
ID11-XX-40-A...	3500	8.4	8.4	8.6	7.3	7.3	7.8	2.6	1.6	0.5	11.0	5.5	2.1
ID11-XX-10-B...	3500	33.5	33.5	36.5	26.7	26.7	29.1	2.6	1.6	0.5	17.6	8.6	3.6
ID11-XX-20-B...	4500	16.8	16.8	17.8	14.3	14.3	15.3	2.6	1.6	0.5	13.2	6.6	2.4
ID11-XX-30-B...	6000	11.2	11.2	11.7	9.8	9.8	10.3	2.6	1.6	0.5	12.1	6.1	2.5
ID11-XX-40-B...	7000	8.4	8.4	8.6	7.4	7.4	7.8	2.6	1.6	0.5	11.0	5.5	2.1

ID10G

Input: 12 / 24V DC
Max. Push / Pull Load: 9000N
Max. Static Load: 18000N
Max. Speed at No Load: 14mm/s
Spindle Type: ACME screw
Stroke: 102 / 153 / 203 / 254 / 305 / 457 / 610mm
Duty Cycle: 10%

IP Level: IP65
Min. Installation Dimension: 297mm+Stroke
Overload protection by clutch
Preset limit switches
Stainless steel extension tube
Option:
 Hall-effect sensor
 Potentiometer (POT)
 IP level: IP66, IP69K
Compatible Product:
 MB30 mounting bracket



Model No.	Max. Push / Pull Load (N)	Typical Speed (mm/s)		Typical Current (A)					
		No Load		Full Load		No Load		Full Load	
		12V	24V	12V	24V	12V	24V		
ID10G	9000	14	10	1.6	0.8	22	11		

ID12

Input: 12 / 24 / 48V DC
Max. Push / Pull Load:
 3500N (ACME screw)
 7000N (Ball screw)
Max. Static Load:
 7500N (ACME screw)
 13600N (Ball screw)
Max. Speed at No Load: 72.1mm/s
Spindle Type: ACME screw or Ball screw
Stroke:
 100 / 150 / 200 / 300 / 450 / 600mm
Duty Cycle: 25%

IP Level: IP66, IP69K
Min. Installation Dimension: 166mm+Stroke
Aluminum outer tube
Stainless steel extension tube
Overload protection by clutch
Option:
 Hall-effect sensor
 Potentiometer (POT)
 Built-in limit switches
 External adjustable reed sensor (NC-type)
 Manual drive socket (8mm hex)
Compatible Product:
 MB30 mounting bracket



External adjustable reed sensor



Model No.	Max. Push / Pull Load (N)	Typical Speed (mm/s)						Typical Current (A)					
		No Load			Full Load			No Load			Full Load		
		12V	24V	48V	12V	24V	48V	12V	24V	48V	12V	24V	48V
ID12-XX-10-A...	1500	33.5	33.5	36.5	26.7	26.7	29.1	2.6	1.6	1.4	17.6	8.8	3.6
ID12-XX-20-A...	2500	16.8	16.8	17.8	14.3	14.3	15.3	2.6	1.6	0.8	13.2	6.6	2.4
ID12-XX-40-A...	3500	8.4	8.4	8.6	7.3	7.3	7.8	2.6	1.6	0.5	11.0	5.5	2.1
ID12-XX-05-B...	2500	67.1	67.1	72.1	47.2	47.2	57.5	3.4	2.6	0.5	26.4	13.2	5.5
ID12-XX-10-B...	3500	33.5	33.5	36.5	26.7	26.7	29.1	2.6	1.6	0.5	17.6	8.6	3.6
ID12-XX-20-B...	4500	16.8	16.8	17.8	14.3	14.3	15.3	2.6	1.6	0.5	13.2	6.6	2.4
ID12-XX-30-B...	6000	11.2	11.2	11.7	9.8	9.8	10.3	2.6	1.6	0.5	12.1	6.1	2.5
ID12-XX-40-B...	7000	8.4	8.4	8.6	7.4	7.4	7.8	2.6	1.6	0.5	11.0	5.5	2.1



ID10BT

Input: 24V DC
Max. Push / Pull Load: 1000N
Max. Static Load: 1500N
Max. Speed at No Load: 72mm/s
Spindle Type: ACME screw
Stroke:
 102 / 153 / 203 / 254 / 305 / 457mm
Duty Cycle: 25%
Noise level: ≤55dB

IP Level: IP65
Min. Installation Dimension: 257mm+Stroke
Preset limit switches
Galvanized steel extension tube
Option:
 Potentiometer (POT)
 IP level: IP66, IP69K
Compatible Product:
 MB30 mounting bracket



Model No.	Max. Push / Pull Load (N)	Typical Speed (mm/s)		Typical Current (A)	
		No Load	Full Load	No Load	Full Load
ID10BT-24F5A...	1000	72	53	1.8	10

ID16

Input: 24V DC
Max. Push / Pull Load: 5500N
Max. Static Load: 13600N
Max. Speed at No Load: 3.3mm/s
Spindle Type: ACME screw
Stroke: 450 / 600 / 900mm
Duty Cycle: 10%

IP Level: IP65
Min. Installation Dimension: 363mm+Stroke
Preset limit switches
Galvanized steel extension tube
Option:
 Hall-effect sensor
 Potentiometer (POT)
 Reed sensor
 Clamp with spherical rod eye

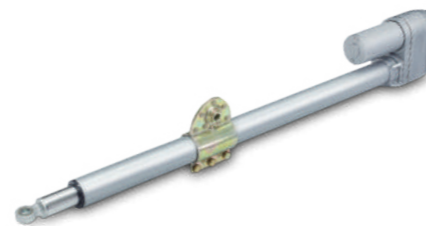


Model No.	Max. Push / Pull Load (N)	Typical Speed (mm/s)		Typical Current (A)	
		No Load	Full Load	No Load	Full Load
ID16	5500	3.3	2.6	0.5	2.3

ID10S

Input: 12 / 24V DC
Max. Push / Pull Load:
 5500N (ACME screw)
 9000N (Ball screw)
Max. Static Load:
 13600N (ACME screw)
 17100N (Ball screw)
Max. Speed at No Load: 5.5mm/s
Spindle Type: ACME screw or Ball screw
Stroke: 450 / 600 / 900mm
Duty Cycle: 25%

IP Level: IP65
Min. Installation Dimension:
 764mm for stroke 450mm (ACME screw)
Overload protection by clutch
Preset limit switches
Galvanized steel extension tube
Option:
 Hall-effect sensor
 Potentiometer (POT)
 Reed sensor
 Stainless steel extension tube



Model No.	Spindle Type	Max. Push / Pull Load (N)	Typical Speed (mm/s)		Typical Current (A)			
			No Load	Full Load	No Load		Full Load	
					12V	24V	12V	24V
ID10S-XX40-E5A...	ACME screw	5500	5.5	4.5	1.8	0.9	7.8	3.9
ID10S-XX40-E5B...	Ball screw	9000	5.5	4.4	1.8	0.9	7.2	3.6

ID18

Input: 24 / 36V DC
Max. Push / Pull Load:
 12000N (ACME screw)
 18000N (Ball screw)
Max. Static Load: 36000N
Max. Speed at No Load: 3.3mm/s
Spindle Type: ACME screw or Ball screw
Stroke: 610 / 914 / 1219mm
Duty Cycle: 10%

IP Level: IP65
Min. Installation Dimension:
 453mm+Stroke (ACME screw)
 506mm+Stroke (Ball screw)
Preset limit switches
Galvanized steel extension tube
Side cable outlet
Customized clamp or trunnion
Option:
 Hall-effect sensor
 Potentiometer (POT)
 Reed sensor
 Bottom cable outlet



Trunnion mount



Model No.	Input Voltage (V DC)	Spindle Type	Max. Push / Pull Load (N)	Typical Speed (mm/s)		Typical Current (A)	
				No Load	Full Load	No Load	Full Load
ID18-2458S3A...	24	ACME screw	12000	2.0	1.5	0.4	4.0
ID18-3658S3A...	36	ACME screw	12000	2.0	1.5	0.4	2.5
ID18-2458S5B...	24	Ball screw	18000	3.3	2.7	0.4	2.4
ID18-3658S5B...	36	Ball screw	18000	3.3	2.7	0.4	1.8



LD3

Input: 12 / 24V DC
Max. Push Load: 1000N
Max. Pull Load: 1000N
Max. Static Load: 2500N
Max. Speed at No Load: 43.9mm/s
Stroke:
 50 / 100 / 150 / 200 / 250 / 300mm
Duty Cycle: 25%
Noise Level: ≤55dB (quiet version)

IP Level: IP54
Min. Installation Dimension: 108mm+Stroke
Preset limit switches
Option:
 Quiet version
 Hall-effect sensor
 Potentiometer (POT)
 IP level: IP65
Compatible products:
 C15 clamp
 MB22 mounting bracket



Model No.	Max. Push / Pull Load (N)	Max. Static Load (N)	Typical Speed (mm/s)		Typical Current (A)			
			No Load	Full Load	No Load		Full Load	
					12V	24V	12V	24V
LD3-XX-05-K3...	150	2500	43.9	36.5	1.2	0.6	3.2	1.6
LD3-XX-10-K3...	250	2500	27.6	23.5	1.2	0.6	3.2	1.6
LD3-XX-20-K3...	500	2500	14.6	12.3	1.2	0.6	3.2	1.6
LD3-XX-30-K3...	800	2500	9.5	7.5	1.2	0.6	3.2	1.6
LD3-XX-40-K3...	1000	2500	7.0	5.5	1.2	0.6	3.2	1.6
LD3Q-XX-20-D3...	500	2500	5.8	3.9	0.2	0.1	1.0	0.5
LD3Q-XX-30-D3...	800	2500	3.8	2.6	0.2	0.1	1.2	0.6

LD36

Input: 12 / 24V DC
Max. Push Load: 1000N
Max. Pull Load: 1000N
Max. Speed at No Load: 43.9mm/s
Stroke:
 50 / 100 / 150 / 200 / 250 / 300mm
Duty Cycle: 25%
Noise Level: ≤60dB

IP Level: IP66, IP69K
Min. Installation Dimension: 108mm+Stroke
Preset limit switches
Option:
 Hall-effect sensor
 Potentiometer (POT)
Compatible product:
 MB22 mounting bracket



Model No.	Max. Push / Pull Load (N)	Self-locking Ability (N)	Typical Speed (mm/s)		Typical Current (A)			
			No Load	Full Load	No Load		Full Load	
					12V	24V	12V	24V
LD36-XX-05...	150	250	43.9	30.8	1.0	0.5	2.4	1.2
LD36-XX-10...	250	340	27.6	16.8	1.0	0.5	2.4	1.2
LD36-XX-20...	500	680	14.6	9.5	1.0	0.6	2.4	1.2
LD36-XX-30...	800	1020	9.5	6.3	1.0	0.5	2.4	1.2
LD36-XX-40...	1000	1530	7.0	4.6	1.0	0.5	2.4	1.2

LD2

Input: 24V DC
Max. Push Load: 800N
Max. Pull Load: 800N
Max. Speed at No Load: 16mm/s
Stroke: 50~300mm
Duty Cycle: 10%
Noise Level: ≤55dB (with E6 motor)

IP Level: IP43
Min. Installation Dimension: 109mm+Stroke
Preset limit switches
Option:
 IP level: IP54
Compatible products:
 C15 clamp
 MB22 mounting bracket

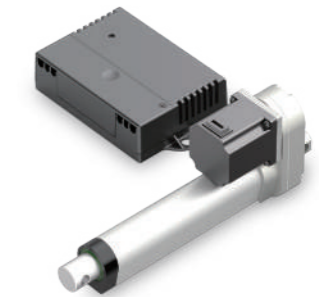


Model No.	Max. Push / Pull Load (N)	Typical Speed (mm/s)		Typical Current (A)	
		No Load	Full Load	No Load	Full Load
LD2-24-30-E6...	800	9	6	0.4	1.4
LD2-24-30-K6...	800	16	12	0.7	3.0

LD3L

Input: 24~33V DC
Max. Push Load: 1000N
Max. Pull Load: 1000N
Max. Speed at No Load: 20.7mm/s
Stroke: 100 / 150 / 200 / 250 / 300mm
Duty Cycle: 80%
Noise level: ≤60dB

IP Level: IP20
Min. Installation Dimension: 107mm+Stroke x 1.02
Preset limit switches
Compatible products:
 C15 clamp
 MB22 mounting bracket



Model No.	Input Voltage (V DC)	Max. Push / Pull Load (N)	Self-locking Ability (N)	Typical Speed (mm/s)		Typical Current (A)	
				No Load	Full Load	No Load	Full Load
LD3L-2433-10...	24	250	2500	20.7	17.5	0.4	1.3
LD3L-2433-40...	24	1000	2500	5.7	5.1	0.3	1.3



LD20

Input: 12 / 24 / 48V DC
Max. Push Load: 2500N
Max. Pull Load: 2500N
Max. Speed at No Load: 27.5mm/s
Stroke: 50 / 100 / 150 / 200 / 250 / 300mm
Duty Cycle: 25%

IP Level: IP65
Min. Installation Dimension: 105mm+Stroke
Preset limit switches
Option:
 Hall-effect sensor
 Potentiometer (POT)
Compatible product:
 MB22 mounting bracket



Model No.	Max. Push / Pull Load (N)	Self-locking Ability (N)	Typical Speed (mm/s)						Typical Current (A)					
			No Load			Full Load			No Load			Full Load		
			12V	24V	48V	12V	24V	48V	12V	24V	48V	12V	24V	48V
LD20-XX-10-G4...	500	1500	26.8	27.0	27.5	18.6	18.7	19.5	1.3	0.6	0.4	4.4	2.4	1.4
LD20-XX-20-G4...	1000	4500	14.7	15.1	15.4	10.4	10.7	11.5	1.1	0.5	0.4	4.6	2.3	1.2
LD20-XX-30-G4...	1500	4500	9.9	10.3	10.5	6.8	7.2	7.4	1.0	0.6	0.3	4.3	2.3	1.3
LD20-XX-40-G4...	2000	4500	7.4	7.6	7.9	5.1	5.7	5.8	1.0	0.6	0.3	4.5	2.3	1.2
LD20-XX-50-G4...	2500	4500	6.2	6.1	6.4	4.4	4.4	4.6	0.9	0.5	0.3	4.1	2.2	1.2

LD40

Input: 12 / 24V DC
Max. Push / Pull Load:
 3000N (ACME screw)
 4000N (Ball screw)
Max. Static Load:
 4000N (ACME screw)
 6000N (Ball screw)
Max. Speed at No Load: 20.5mm/s
Stroke:
 100 / 150 / 200 / 250 / 300 / 350 / 400mm
Spindle Type: ACME screw or Ball screw
Duty Cycle: 10%

IP Level: IP54
Min. Installation Dimension: 153mm+Stroke
Outer Tube Color: Anodized black
Stainless steel extension tube
Friction clutch for over load protection
Option:
 Hall-effect sensor
 External reed sensor (NC type)



Motor on the left side



Motor on the right side

Model No.	Spindle Type	Max. Push / Pull Load (N)	Typical Speed (mm/s)		Typical Current (A)			
			No Load	Full Load	No Load		Full Load	
					12V	24V	12V	24V
LD40-XX-25F4B...	Ball screw	4000	10.5	8.0	2.0	1.0	10.5	5.3
LD40-XX-12F4B...	Ball screw	2000	20.5	16.3	1.9	1.0	11.3	5.6
LD40-XX-25F4A...	ACME screw	3000	9.5	6.2	2.5	1.3	15.5	7.3

MK32

Input: 24V DC
Max. Push Load: 3500N
Max. Pull Load: 3500N
Max. Speed at No Load: 26.0mm/s
Stroke: 50~600mm
Duty Cycle: 10%
Noise Level: ≤52dB

IP Level: IPX4
Min. Installation Dimension: 112mm+Stroke
Option:
 Hall-effect sensor
 Potentiometer (POT)
 Mechanical push only extension tube
 Safety nut (in push direction)
 IP level: IP66
Compatible product:
 MB22 mounting bracket



Model No.	Max. Push / Pull Load (N)	Typical Speed (mm/s)		Typical Current (A)	
		No Load	Full Load	No Load	Full Load
MK32-24N3...	3500	6.5	5.0	2.5	5.0
MK32-24N4...	3000	8.5	6.0	2.5	5.2
MK32-24N6...	2500	13.0	9.0	2.5	6.0
MK32-24N8...	2000	17.0	11.5	2.5	5.5
MK32-24NC...	1500	26.0	14.0	2.5	6.0
MK32-24P4...	3000	6.0	3.0	2.5	5.0
MK32-24P6...	2500	10.5	5.5	2.5	4.5
MK32-24P8...	2000	14.0	7.5	2.5	4.5

LD60

Input: 24V DC
Max. Push Load: 6000N
Max. Pull Load: 6000N
Max. Speed at No Load: 8.4mm/s
Stroke: 100~400mm
Duty Cycle: 10%
Noise Level: ≤52dB

IP Level: IPX2
Min. Installation Dimension:
 190mm+Stroke
 190mm (without inner & outer tubes)
Aluminum alloy outer tube and gearbox
Options:
 Standard / fast version
 Without extension tube and outer tube
 Rear connector turns 90° in pivot orientation
 Anodized black outer tube and gearbox



Aluminum alloy



Anodized black



Without inner & outer tubes

Model No.	Max. Push / Pull Load (N)	Typical Speed (mm/s)		Typical Current (A)	
		No Load	Full Load	No Load	Full Load
LD60-24K4...	6000	5.5	3.9	0.4	5.1
LD60-24K6...	6000	8.4	4.9	0.6	7.0



MD10

Input: 24V DC
Max. Push Load: 1000N
Max. Pull Load: 1000N
Max. Speed at No Load: 36.0mm/s
Stroke: 50~300mm
Duty Cycle: 10%
Noise Level: ≤52dB

IP Level: IPX5
Min. Installation Dimension: 115mm+Stroke
Option:
 Hall-effect sensor
 Mechanical push only extension tube
Compatible product:
 MB22 mounting bracket



Model No.	Max. Push / Pull Load (N)	Typical Speed (mm/s)		Typical Current (A)	
		No Load	Full Load	No Load	Full Load
MD10-24F4...	1000	5.1	2.8	0.8	1.1
MD10-24R4...	1000	7.2	4.5	1.0	1.8
MD10-24F8...	750	10.1	4.3	0.8	1.4
MD10-24R8...	750	14.2	8.4	1.0	2.1
MD10-24FC...	500	15.1	7.4	0.8	1.3
MD10-24L8...	500	18.6	14.8	1.2	2.0
MD10-24RC...	500	21.6	13.9	1.0	1.8
MD10-24LC...	400	27.5	20.0	1.2	2.1
MD10-24LG...	250	36.0	29.3	1.2	1.9

MD21

Input: 24V DC
Max. Push Load: 2000N
Max. Pull Load: 2000N
Max. Speed at No Load: 23.6mm/s
Stroke: 50~400mm
Duty Cycle: 10%
Noise Level: ≤50dB

IP Level: IPX5
Min. Installation Dimension: 135mm+Stroke
Option:
 Hall-effect sensor
Compatible Product:
 MB22 mounting bracket



Model No.	Max. Push / Pull Load (N)	Typical Speed (mm/s)		Typical Current (A)	
		No Load	Full Load	No Load	Full Load
MD21-24N4...	2000	7.5	5.3	1.1	3.0
MD21-24N6...	1500	11.0	7.6	1.1	3.2
MD21-24NC...	1000	23.6	15.7	1.1	3.2

MD50

Input: 24V DC
Max. Push Load: 3500N
Max. Pull Load: 2000N
Max. Speed at No Load: 11.4mm/s
Stroke: 50~600mm
Duty Cycle: 10%

Min. Installation Dimension:
 192mm (stroke ≤ 55mm)
 137mm+Stroke (stroke ≤ 300mm)
 156mm+Stroke (stroke > 300mm)
Preset limit switches
Option:
 Mechanical push only extension tube



Model No.	Max. Push Load (N)	Max. Pull Load (N)	Typical Speed (mm/s)		Typical Current (A)	
			No Load	Full Load	No Load	Full Load
MD50-24-A3...	3500	2000	5.0	3.8	0.8	3.8
MD50-24-F3...	2000	2000	11.4	9.0	0.9	3.5

MD51

Input: 24V DC
Max. Push Load: 3500N
Max. Pull Load: 2000N
Max. Speed at No Load: 11.4mm/s
Stroke: 100~600mm
Duty Cycle: 10%

IP Level: IP66
Min. Installation Dimension: 141mm+Stroke
Preset limit switches
Option:
 Mechanical push only extension tube



Model No.	Max. Push Load (N)	Max. Pull Load (N)	Typical Speed (mm/s)		Typical Current (A)	
			No Load	Full Load	No Load	Full Load
MD51-24-A3...	3500	2000	5.0	3.8	0.8	3.8
MD51-24-F3...	2000	2000	11.4	9.0	0.9	3.5



MD52

Input: 24V DC
Max. Push Load: 1000N
Max. Pull Load: 1000N
Max. Speed at No Load: 25mm/s
Stroke: 100~300mm
Duty Cycle: 10%

IP Level: IP66, IP69K
Min. Installation Dimension: 156mm+Stroke
Preset limit switches
Stainless steel extension tube
Option:
 Potentiometer (POT)
 Bellow protection (available with 100mm stroke only)



Bellow protection

Model No.	Max. Push / Pull Load (N)	Typical Speed (mm/s)		Typical Current (A)	
		No Load	Full Load	No Load	Full Load
MD52-24-M6...	1000	25.0	18.5	1.5	5.0

MD53

Input: 24 / 36V DC
Max. Push Load: 3500N
Max. Pull Load: 2000N
Max. Speed at No Load: 10.5mm/s
Stroke: 100~300mm
Duty Cycle: 10%
Noise Level: ≤60dB

Min. Installation Dimension: 167mm+Stroke
Preset limit switches
Option:
 Potentiometer (POT)



Model No.	Max. Push Load (N)	Max. Pull Load (N)	Typical Speed (mm/s)		Typical Current (A)			
			No Load	Full Load	No Load		Full Load	
					24V	36V	24V	36V
MD53	3500	2000	10.5	8.5	1.0	0.8	4.5	3.5

MD56

Input: 24V DC
Max. Push Load: 5000N
Max. Pull Load: 3500N
Max. Speed at No Load: 40mm/s
Stroke: 50~400mm
Duty Cycle: 10%

IP Level: IP21
Min. Installation Dimension: 156mm+Stroke
Motor orientation: 360° adjustable in 30° increments
Preset limit switches
Option:
 Hall-effect sensor
 Potentiometer (POT)
 IPX6 waterproof case



Model No.	Max. Push Load (N)	Max. Pull Load (N)	Typical Speed (mm/s)		Typical Current (A)	
			No Load	Full Load	No Load	Full Load
MD56-X-24R3...	5000	3500	5.0	4.0	1.0	4.0
MD56-X-24W6...	2000	2000	16.5	13.5	2.0	5.0
MD56-X-24N9...	1500	1500	40.0	30.0	2.8	8.0

MD57

Input: 12 / 24V DC
Max. Push Load: 4000N
Max. Pull Load: 4000N
Max. Speed at No Load: 12.6mm/s
Stroke: 50~300mm
Duty Cycle: 10%

Min. Installation Dimension: 143mm+Stroke
Motor orientation: 360° adjustable in 30° increments
Option:
 12V DC high power motor
 Hall-effect sensor
 Potentiometer (POT)
 Built-in limit switches
 IPX6 waterproof case



Model No.	Input Voltage (V DC)	Max. Push / Pull Load (N)	Typical Speed (mm/s)		Typical Current (A)	
			No Load	Full Load	No Load	Full Load
MD57-X-24K3...	24	4000	4.8	3.5	0.7	3.5
MD57-X-24K4...	24	3200	6.4	4.8	0.7	3.4
MD57-X-24K6...	24	2700	9.4	7.0	0.7	3.8
MD57-X-24K8...	24	2300	12.6	8.9	0.8	4.0



MK45

Input: 24V DC
Max. Push Load: 1000N
Max. Pull Load: 1000N
Max. Static Load: 2500N
Max. Speed at No Load: 5.0mm/s
Stroke: 50 / 100 / 150 / 200 / 250 / 300mm
Duty Cycle: 10%
Noise Level: ≤55dB

IP Level: IP65
Min. Installation Dimension: 195mm+Stroke
Preset limit switches
Aluminum tubes
Compatible product:
 MB22 mounting bracket



Model No.	Max. Push/Pull Load (N)	Typical Speed (mm/s)		Typical Current (A)	
		No Load	Full Load	No Load	Full Load
		MK45	1000	5.0	3.5

MK50

Input: 12 / 24V DC
Max. Push Load: 4500N
Max. Pull Load: 4500N
Max. Static Load: 4700N
Max. Speed at No Load: 34mm/s
Stroke: 50~750mm
Duty Cycle: 10%

IP Level: IP66, IP67, IP69K
Min. Installation Dimension: 255mm+Stroke
Material:
 All stainless steel (SUS304)
 Black coating steel
Option:
 Hall-effect sensor



Model No.	Max. Push/Pull Load (N)	Typical Speed (mm/s)		Typical Current (A)	
		No Load	Full Load	No Load	Full Load
MK50-12-B...	1400	34	24	4	16
MK50-12-D...	2400	19	13	2	16
MK50-12-E...	4500	10	7	2	14
MK50-24-G...	1750	31	23	2	8
MK50-24-J...	3100	19	14	1	8
MK50-24-K...	4500	9	7	1	7

LD12

Input: 12 / 24V DC
Max. Push Load: 1500N
Max. Pull Load: 1500N
Max. Static Load: 1800N
Max. Speed at No Load: 17.4mm/s
Stroke: 50 / 100 / 150 / 200 / 250 / 300 / 350 / 400mm
Duty Cycle: 10%

IP Level: IP66
Min. Installation Dimension: 183mm+Stroke
Material:
 All stainless steel (SUS304)
 Black coating steel
Option:
 Hall-effect sensor
 IP level: IP69K
Compatible product:
 MB22 mounting bracket



Model No.	Max. Push / Pull Load (N)	Typical Speed (mm/s)		Typical Current (A)			
		No Load	Full Load	No Load		Full Load	
				12V	24V	12V	24V
LD12-XX19-M2...	600	17.4	11.7	0.5	0.25	3.6	1.8
LD12-XX27-M2...	1000	12.3	8.0	0.5	0.25	3.6	1.8
LD12-XX43-M2...	1500	7.5	5.0	0.5	0.25	3.6	1.8
LD12-2457-K2...	1500	3.5	2.3	N/A	0.20	N/A	0.8

MKS1

Input: 12V DC
Max. Push Load: 80N
Max. Pull Load: 80N
Max. Static Load: 40N
Max. Speed at No Load: 19mm/s
Stroke: 10 / 30 / 50 / 100mm
Duty Cycle: 20%
Noise Level: ≤55dB

IP Level: IP66, IP69K
Min. Installation Dimension: 57mm+Stroke
Aluminum extension tube
Option:
 MKS1-L version: with limit switches
 MKS1-P version: with potentiometer (POT)



Model No.	Max. Push / Pull Load (N)	Self-locking Ability (N)	Typical Speed (mm/s)		Typical Current (A)	
			No Load	Full Load	No Load	Full Load
MKS1-X-12-E...	42	21	19.0	12.2	0.14	0.27
MKS1-X-12-F...	80	40	9.5	6.3	0.12	0.22



CB3T-SYD

Input: 12V DC/AC
Output: 12V DC
Max. Current Allowed: 5A per channel
Number of Actuator(s): 2 (supports synchronous movement)
Number of Control(s): 1
Duty Cycle: 10%



CI72

Input: 12 / 24V DC
Number of Actuator(s): 1~2 channels (supports synchronous movement)
Max. Current Allowed: 25A (per channel)
Function parameters that can be set up:
 Control mode / Number of actuator / Positioning feedback /
 Soft start & stop / Over-current protection
Duty Cycle:
 15% (2 x 20A), max. 40 sec. continuous operation in 4.5 min
 40% (2 x 10A), max. 2 min. continuous operation in 5 min
Option:
 DIN rail holder (DIN NS 32 or NS 35 / 7.5 rail)



CI71

Input / Output Voltage: 12V DC
Max. Current Allowed: 25A
Number of Actuator(s): 1
Number of Control(s): 1
Compatible Products: ID10, ID10K, ID12 (standard version)
Can be directly assembled on the compatible actuators



CI73

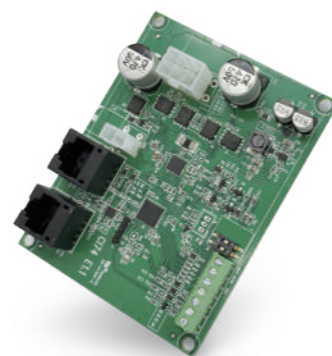
Input: 12V DC / 24V DC
Output: Same as input voltage
Max. Current Allowed: 16A (12V DC version) / 10A (24V DC version)
Number of Actuator(s):
 1 channel (supports synchronous movement up to 8 sets of CI73)
Duty Cycle: 15%
 Supports potentiometer (POT) and Hall-effect sensor feedback
 Supports actuators with or without limit switches
 LED operation indicator
 Plastic PCB spacers
Option:
 DIN rail holder (DIN NS 32 or NS 35 / 7.5 rail)
Compatible Product:
 HM wired control





CI74

Input: 12~29V DC
Output: Same as input voltage
Max. Current Allowed: 16A
Number of Actuator(s): 1 channel
Control Platform: Modbus RTU communication protocol
Duty Cycle: 25%
 Supports Hall-effect sensor feedback
 Supports actuators with or without stroke limit switches
 Supports Moteck CI74 PC tool for actuator control and parameter settings
 LED operation indicator
 Plastic PCB spacers
Option:
 DIN rail holder (DIN NS 32 or NS 35/7.5 rail)
 USB to RJ45 PC setting cable (1500mm)
 Terminating resistor (0.25W, 120Ω)



CM23

Input: 29V DC
Output: 29V DC
Output Rated Current: 4A (1 channel), 6A (2 channels total)
Number of Actuator(s): 2
Number of Control(s): 1
Duty Cycle: 10%
IP Level: IPX6
Option:
 Built-in RF receiver



CI10

Input: 110 / 230V AC (adjustable by a slide switch)
Output: 24V DC
Max. Current Allowed: 10A
Power Supply: 216W (24V, 9A) toroidal transformer
Number of Actuator(s): 1 channel
Duty Cycle: 10%
 Emergency stop button
 Equipped a three-way switch for movement control
 LED Power on indicator
 Supports external battery (24V)
 2nd output for supplementary device (24V DC, max. 350mA)
Compatible Products:
 ID10, ID10BT, ID11, ID12



CF16

Input: 24V DC
Output: 24V DC
Max. Current Allowed: 2.4A
Number of Actuator(s): 1 channel
Duty Cycle: 10%
 Power supply provided by the customer
 Multi-controller connection is possible
 External commands to extend or retract actuators
 Supports wireless remote control
 Recommend to use with MK45



DLC1

Input: 24V DC
Max. Push Load: 2000N
Max. Speed at No Load: 10.9mm/s
Bending Moment: 500Nm (static) / 250Nm (dynamic)
Stroke: 50~400mm
Duty Cycle: 10%
Noise Level: ≤50dB
IP Level: IPX4
Preset limit switches
Option:
 Hall-effect sensor
 IP level: IPX6



Model No.	Max. Push Load (N)	Typical Speed (mm/s)		Typical Current (A)	
		No Load	Full Load	No Load	Full Load
DLC1-24RH...	2000	10.9	9.8	1.7	4.1

DLC3

Input: 24V DC
Max. Push Load: 4000N
Max. Speed at No Load: 16mm/s
Bending Moment: 2000Nm (static) / 1000Nm (dynamic)
Stroke: 260~840mm
Duty Cycle: 10%
Noise Level: ≤65dB
IP Level: IPX6
Preset limit switches
Option:
 Hall-effect sensor



Model No.	Max. Push Load (N)	Typical Speed (mm/s)		Typical Current (A)	
		No Load	Full Load	No Load	Full Load
DLC3-24FC...	4000	16	13	1.4	8.7

DLC2

Input: 24V DC
Max. Push / Pull Load: 2000N
Max. Speed at No Load: 18mm/s
Bending Moment: 1000Nm (static) / 750Nm (dynamic)
Stroke: 140 / 261 / 450mm
Duty Cycle: 10%
Noise Level: ≤53dB
Preset limit switches
Option:
 Hall-effect sensor



Model No.	Max. Push / Pull Load (N)	Typical Speed (mm/s)		Typical Current (A)	
		No Load	Full Load	No Load	Full Load
DCL2-24H6...	2000	18	13	1.1	4.5

MB22

Mounting Bracket

For installing linear actuators
(or connect the front or rear connectors of the actuators)

Material: Steel

Mounting hole: $\varnothing 6.4\text{mm}$, $\varnothing 8\text{mm}$, $\varnothing 10\text{mm}$

Compatible Products:

LD12, LD2, LD20, LD3, LD3L, LD36, MD10, MD21, MK32, MK45



MB30

Mounting Bracket

For installing linear actuators
(or connect the front or rear connectors of the actuators)

Material: Steel

Mounting hole: $\varnothing 13\text{mm}$

Compatible Products:

IA5, ID10, ID10BT, ID10P, ID11, ID12, ID10G, ID10K, MK7L



C15

Clamp

For bending prevention
(or as the rear connector of the actuators)

Material: Anodizing aluminum

Comply with the shape and size of the outer tube of the actuators

Compatible Products:

LD2, LD3, LD3L



The information contained in this publication has been carefully taken to ensure the accuracy. However, it is the responsibility of the product user to determine the suitability for a specific application. There is no liability can be accepted for any loss or damage whether direct, indirect or consequential occurring out of the operation.

This catalog is made in Sep. 2025. The products might be subject to change without prior notice as Moteck's continuous improvement and maintenance on our products. Please refer to the respective product datasheets on our website for the latest information.