

# FURNITURE APPLICATIONS



**MOTECK**<sup>®</sup>  
MOTORIZE OUR WORLD



**MOTECK**<sup>®</sup>  
MOTORIZE OUR WORLD

# About Moteck

Drawing on a heritage of more than 20 years in designing and producing reliable electromotive drive and control system, Moteck® products and solutions are comprehensively adopted by well-known customers worldwide. Started business in satellite TV antenna motorization, we have been successfully expanding our business to market sectors in medical, homecare, furniture, industrial automation, mobility off highway, solar tracker, and gate opener.

The quality management system with ISO 9001 certified is solid executed for the whole organization. All products are compliant with international standards, such as CE, UL, PSE and RoHS, according to different countries and industrial requirements. With strong capability of manufacturing, product development and system integration, we can meet specific customization needs. Now we are strategic partner of many customers in US, Europe, Japan, and China, to design whole electromotive drive system for their products.



## Advantage

- Satisfied quality to price ratio
- High creativity and flexibility
- Customization available for diversified specification
- Harmonious integration of electronic and mechanical engineering
- Professional global operations
- Manufacturing capabilities with large scale capacity



## Location

Head Office: Taipei, Taiwan  
Factory: Taoyuan, Taiwan & Suzhou, China



Taipei, Taiwan



Taoyuan, Taiwan



Suzhou, China

## Control



TXE



TX31



TX32

## Control Box



CBT2



CF31



CF32

## Actuator



FD10



FD20



FD40



FD60



FD61

## Adjustable Bed



1-Motor System



2-Motor System



3-Motor System

Recliner



Control



HZ01



HB



H2B

Actuator



FD20



FD60



FD61



BD21



BD23

Power Supply



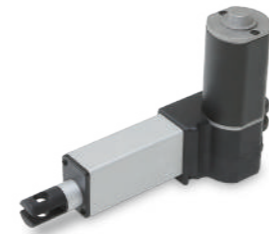
DPB-58-2920-C8



## FD10

**Input:** 24V DC  
**Max. Push Load:** 1000N  
**Max. Pull Load:** 500N  
**Max. Speed at No Load:** 15.1mm/s  
**Stroke:** 50~300mm  
**Duty Cycle:** 10%  
**Noise Level:** ≤50dB

**IP Level:** IP42 (Static; non-action)  
**Min. Installation Dimension:** 120mm+Stroke  
**Option:**  
 Hall-effect sensor  
 Mechanical push only extension tube  
 PTC thermistor for thermal protection  
 With direct-cut cable to work without control box



CF31



CF32



CF12H

Model No.	Max. Push Load (N)	Max. Pull Load (N)	Typical Speed (mm/s)		Typical Current (A)	
			No Load	Full Load	No Load	Full Load
FD10-24SF4...	1000	500	8.4	5.5	0.5	1.5
FD10-24SF6...	1000	500	11.5	6.2	0.5	1.7
FD10-24SF8...	500	500	15.1	9.8	0.5	1.3

## FD20

**Input:** 24V DC  
**Max. Push Load:** 2000N  
**Max. Pull Load:** 2000N  
**Max. Speed at No Load:** 33.3mm/s  
**Stroke:** 50~300mm  
**Duty Cycle:** 10%  
**Noise Level:** ≤53dB

**IP Level:** IP42 (Static; non-action)  
**Min. Installation Dimension:** 135mm+Stroke  
**Option:**  
 Hall-effect sensor  
 Mechanical push only extension tube  
 Mechanical brake  
 With direct-cut cable to work without control box



CF31



CF32



CF12H

Model No.	Max. Push/Pull Load (N)	Self-Locking ability (N)	Typical Speed (mm/s)		Typical Current (A)	
			No Load	Full Load	No Load	Full Load
FD20-24-A3...	2000	2000	4.3	3.3	0.3	2.0
FD20-24-A4...	2000	1500	5.6	4.0	0.3	2.3
FD20-24-K4...	2000	1000	11.1	5.6	0.3	2.5
FD20-24-A8...	1000	700	11.1	6.2	0.3	2.0
FD20-24-K8...	1000	700	22.2	11.5	0.3	2.5
FD20-24-AC...	1000	500	16.6	8.7	0.3	2.3
FD20-24-KC...	500	300	33.3	21.0	0.3	2.0

## FD40

**Input:** 24V DC  
**Max. Push Load:** 4000N  
**Max. Pull Load:** 2000N  
**Max. Speed at No Load:** 30.3mm/s  
**Stroke:** 50~400mm  
**Duty Cycle:** 10%  
**Noise Level:** ≤50dB

**IP Level:** IP42 (Static; non-action)  
**Min. Installation Dimension:** 110mm+Stroke  
**Option:**  
 Enhanced motor  
 Hall-effect sensor  
 Mechanical push only extension tube  
 PTC thermistor for thermal protection  
 With direct-cut cable to work without control box



CF31



CF32



CF12H



Motor on the right side



Motor on the left side

Model No.	Max. Push Load (N)	Max. Pull Load (N)	Typical Speed (mm/s)		Typical Current (A)	
			No Load	Full Load	No Load	Full Load
FD40-24DF4...	1500	1500	7.7	5.8	0.3	2.5
FD40-24DF8...	500	500	16.0	13.5	0.3	1.8
FD40-24EF4...	4000	2000	8.4	4.0	0.2	3.3
FD40-24EF6...	3000	2000	11.9	6.3	0.2	3.3
FD40-24EF8...	2500	2000	15.9	8.1	0.3	3.3
FD40-24EH8...	1500	1500	30.3	14.3	0.4	3.3

## FD60

**Input:** 12 / 24V DC  
**Max. Push Load:** 6000N  
**Max. Pull Load:** 4000N  
**Max. Speed at No Load:** 33.3mm/s  
**Stroke:** 50~300mm  
**Duty Cycle:** 10%  
**Noise Level:** ≤50dB

**IP Level:** IP42 (Static; non-action)  
**Min. Installation Dimension:** 160mm+Stroke  
**Option:**  
 Hall-effect sensor  
 Mechanical push only extension tube  
 Mechanical brake  
 With direct-cut cable to work without control box



CF31



CF32



CF12H

Model No.	Max. Push Load (N)	Max. Pull Load (N)	Self-locking Ability (N)	Typical Speed (mm/s)		Typical Current (A)			
				No Load	Full Load	No Load		Full Load	
						12V	24V	12V	24V
FD60-XX-A4...	6000	4000	5000	4.2	2.9	1.2	0.6	5.4	2.7
FD60-XX-F4...	5000	4000	5000	5.5	4.4	1.2	0.6	5.6	2.8
FD60-XX-A6...	4000	4000	2500	6.2	3.8	1.2	0.6	5.6	2.8
FD60-XX-F8...	3000	3000	2000	11.0	8.2	1.2	0.6	5.8	2.9
FD60-XX-AG...	1500	1500	700	16.6	12.2	1.2	0.6	5.6	2.8
FD60-XX-KG...	750	750	0	33.3	23.5	1.2	0.6	5.4	2.7



## FD61

**Input:** 12 / 24V DC  
**Max. Push Load:** 6000N  
**Max. Pull Load:** 4000N  
**Max. Speed at No Load:** 33.3mm/s  
**Stroke:** 50~300mm  
**Duty Cycle:** 10%  
**Noise Level:** ≤50dB

**IP Level:** IP42 (static; non-action)  
**Min. Installation Dimension:** 150mm+Stroke  
**Option:**  
 Hall-effect sensor  
 Mechanical push only extension tube  
 Mechanical brake  
 With direct-cut cable to work without control box



CF31



CF32



CF12H

Model No.	Max. Push Load (N)	Max. Pull Load (N)	Self-locking Ability (N)	Typical Speed (mm/s)		Typical Current (A)			
				No Load	Full Load	No Load		Full Load	
						12V	24V	12V	24V
FD61-XX-A4...	6000	4000	5000	4.2	2.9	1.2	0.6	5.4	2.7
FD61-XX-A6...	4000	4000	2500	6.2	3.8	1.2	0.6	5.6	2.8
FD61-XX-A8...	3000	3000	2000	8.3	5.0	1.2	0.6	5.6	2.8
FD61-XX-AG...	1500	1500	700	16.6	12.2	1.2	0.6	5.6	2.8
FD61-XX-KG...	750	750	0	33.3	23.3	1.2	0.6	5.4	2.7

## MK33

**Input:** 24V DC  
**Max. Push Load:** 6000N  
**Max. Pull Load:** 3000N  
**Max. Speed at No Load:** 4.2mm/s  
**Stroke:** 50~300mm  
**Duty Cycle:** 10%  
**Noise Level:** ≤48dB

**IP Level:** IP42 (static; non-action)  
**Min. Installation Dimension:** 125mm+Stroke  
**Option:**  
 Hall-effect sensor  
 Mechanical push only extension tube  
 With direct-cut cable to work without control box



CF31



CF32



CF12H

Model No.	Max. Push Load (N)	Max. Pull Load (N)	Typical Speed (mm/s)		Typical Current (A)	
			No Load	Full Load	No Load	Full Load
MK33-24DA4...	6000	3000	4.2	2.9	0.8	3.4

## BD21

**Input:** 24V DC  
**Max. Push Load:** 2000N  
**Max. Pull Load:** 2000N  
**Max. Speed at No Load:** 52mm/s  
**Stroke:** 50~333mm  
**Duty Cycle:** 10%  
**Noise Level:** ≤55dB

**Retracted Length:** ≥130mm  
**With direct-cut cable to work without control box**  
**Option:**  
 Hall-effect sensor  
 Cable outlet from front or rear end  
 2 types of plastic nuts are available



Model No.	Max. Push/Pull Load (N)	Typical Speed (mm/s)		Typical Current (A)	
		No Load	Full Load	No Load	Full Load
BD21-X0-24-HC...	1500	52	42	0.5	2.5
BD21-X0-24-K3...	2000	8.3	4.7	0.3	2.5

## BD23

**Input:** 24V DC  
**Max. Push Load:** 1500N  
**Max. Pull Load:** 1500N  
**Max. Speed at No Load:** 40mm/s  
**Stroke:** 40~233mm  
**Duty Cycle:** 10%  
**Noise Level:** ≤53dB

**Retracted Length:** ≥133mm  
**With direct-cut cable to work without control box**  
**Option:**  
 Cable outlet from front or rear end  
 3 types of plastic slider blocks are available



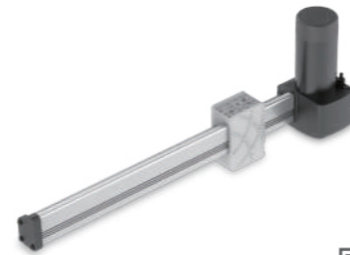
Model No.	Max. Push Load (N)	Max. Pull Load (N)	Typical Speed (mm/s)		Typical Current (A)	
			No Load	Full Load	No Load	Full Load
BD23-XX-24-N4...	1500	1000	25	23	0.6	2.3
BD23-XX-24-W6...	1500	1500	40	33	0.6	4.0



## BD61

**Input:** 12 / 24V DC  
**Max. Push Load:** 6000N  
**Max. Pull Load:** 4000N  
**Max. Speed at No Load:** 33.3mm/s  
**Stroke:** 100~1000mm  
**Duty Cycle:** 10%  
**Noise Level:** ≤53dB

**Retracted Length:** ≥127mm  
**Option:**  
 Hall-effect sensor  
 Mechanical brake  
 Mounting bracket  
 With direct-cut cable to work without control box



CF31



CF32



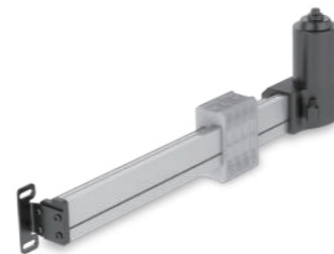
CF12H

Model No.	Max. Push Load (N)	Max. Pull Load (N)	Self-locking Ability (N)	Typical Speed (mm/s)		Typical Current (A)			
				No Load	Full Load	No Load		Full Load	
						12V	24V	12V	24V
BD61-XX-A4...	6000	4000	5000	4.2	2.9	0.8	0.6	5.4	2.7
BD61-XX-F4...	5000	4000	5000	5.5	4.4	0.8	0.6	5.6	2.8
BD61-XX-A6...	4000	4000	2500	6.2	3.8	0.4	0.6	6.0	3.0
BD61-XX-A8...	3000	3000	2000	8.3	5.0	0.6	0.6	5.4	2.7
BD61-XX-F8...	3000	3000	2000	11.0	8.2	1.0	0.6	5.8	2.9
BD61-XX-AG...	1500	1500	700	16.6	12.2	0.4	0.6	5.6	2.8
BD61-XX-KG...	750	750	0	33.3	23.5	0.4	0.6	5.2	2.7

## BD62

**Input:** 24V DC  
**Max. Push Load:** 3000N  
**Max. Pull Load:** 3000N  
**Max. Speed at No Load:** 6.3mm/s  
**Stroke:** 100~1000mm  
**Duty Cycle:** 10%  
**Noise Level:** ≤55dB

**Retracted Length:** ≥142mm  
**Option:**  
 Hall-effect sensor  
 Mechanical brake  
 With direct-cut cable to work without control box



CF31



CF32



CF12H

Model No.	Max. Push Load (N)	Max. Pull Load (N)	Self-locking Ability (N)	Typical Speed (mm/s)		Typical Current (A)	
				No Load	Full Load	No Load	Full Load
BD62-XX-A6...	3000	3000	3000	6.3	4.0	0.8	2.9

## MKS1

**Input:** 12V DC  
**Max. Push Load:** 80N  
**Max. Pull Load:** 80N  
**Max. Static Load:** 40N  
**Max. Speed at No Load:** 19mm/s  
**Stroke:** 10 / 30 / 50 / 100mm  
**Duty Cycle:** 20%  
**Noise Level:** ≤55dB

**IP Level:** IP66 / IP69K (static; non-action)  
**Min. Installation Dimension:** 67mm+Stroke  
**Option:**  
 MKS1-L version: with limit switches  
 MKS1-P version: with potentiometer (POT)



Model No.	Max. Push/Pull Load (N)	Self-locking Ability (N)	Typical Speed (mm/s)		Typical Current (A)	
			No Load	Full Load	No Load	Full Load
MKS1-X-12-E...	42	21	19.0	12.2	0.14	0.27
MKS1-X-12-F...	80	40	9.5	6.3	0.12	0.22

## LD60

**Input:** 24V DC  
**Max. Push Load:** 6000N  
**Max. Pull Load:** 6000N  
**Max. Speed at No Load:** 8.4mm/s  
**Stroke:** 100~400mm  
**Duty Cycle:** 10%  
**Noise Level:** ≤52dB

**IP Level:** IPX2 (static; non-action)  
**Min. Installation Dimension:**  
 190mm+Stroke  
 190mm (without inner & outer tubes)  
**Aluminum alloy outer tube and gearbox**  
**Options:**  
 Standard / fast version  
 Without extension tube and outer tube  
 Anodized black outer tube and gearbox



Aluminum alloy



Anodized black



Without inner & outer tubes

Model No.	Max. Push/Pull Load (N)	Typical Speed (mm/s)		Typical Current (A)	
		No Load	Full Load	No Load	Full Load
LD60-24K4...	6000	5.5	3.9	0.4	5.1
LD60-24K6...	6000	8.4	4.9	0.6	7.0



## MD21

**Input:** 24V DC  
**Max. Push Load:** 2000N  
**Max. Pull Load:** 2000N  
**Max. Speed at No Load:** 23.6mm/s  
**Stroke:** 50~400mm  
**Duty Cycle:** 10%  
**Noise Level:** ≤50dB

**IP Level:** IPX5 (Static; non-action)  
**Min. Installation Dimension:** 135mm+Stroke  
**Option:**  
 Hall-effect sensor  
**Compatible Products:**  
 MB22 mounting bracket



Model No.	Max. Push / Pull Load (N)	Typical Speed (mm/s)		Typical Current (A)	
		No Load	Full Load	No Load	Full Load
MD21-24N4...	2000	7.5	5.3	1.1	3.0
MD21-24N6...	1500	11.0	7.6	1.1	3.2
MD21-24NC...	1000	23.6	15.7	1.1	3.2

## MK32

**Input:** 24V DC  
**Max. Push Load:** 3500N  
**Max. Pull Load:** 3500N  
**Max. Speed at No Load:** 26.0mm/s  
**Stroke:** 50~600mm  
**Duty Cycle:** 10%  
**Noise Level:** ≤52dB

**IP Level:** IPX4, IP66 (Static; non-action)  
**Min. Installation Dimension:** 112mm+Stroke  
**Option:**  
 Hall-effect sensor  
 Mechanical push only extension tube  
 Safety nut (in push direction)



Model No.	Max. Push / Pull Load (N)	Typical Speed (mm/s)		Typical Current (A)	
		No Load	Full Load	No Load	Full Load
MK32-24N3...	3500	6.5	5.0	2.5	5.0
MK32-24N4...	3000	8.5	6.0	2.5	5.2
MK32-24N6...	2500	13.0	9.0	2.5	6.0
MK32-24N8...	2000	17.0	11.5	2.7	5.5
MK32-24NC...	1500	26.0	14.0	2.5	6.0
MK32-24P4...	3000	6.0	3.0	2.5	5.0
MK32-24P6...	2500	10.5	5.5	2.5	4.5
MK32-24P8...	2000	14.0	7.5	2.7	4.5

## LD3

**Input:** 12 / 24V DC  
**Max. Push Load:** 1000N  
**Max. Pull Load:** 1000N  
**Max. Static Load:** 2500N  
**Max. Speed at No Load:** 43.9mm/s  
**Stroke:**  
 50 / 100 / 150 / 200 / 250 / 300mm  
**Duty Cycle:** 25%  
**Noise Level:** ≤55dB (quiet version)

**IP Level:** IP54 (static; non-action)  
**Min. Installation Dimension:** 108mm+Stroke  
**Option:**  
 Quiet version  
 Hall-effect sensor  
 Potentiometer (POT)  
 IP level: IP65 (static; non-action)



Model No.	Max. Push / Pull Load (N)	Self-locking Ability (N)	Typical Speed (mm/s)		Typical Current (A)			
			No Load	Full Load	No Load		Full Load	
					12V	24V	12V	24V
LD3-XX-05-K3...	150	2500	43.9	36.5	0.6	1.2	1.6	3.2
LD3-XX-10-K3...	250	2500	27.6	23.5	0.6	1.2	1.6	3.2
LD3-XX-20-K3...	500	2500	14.6	12.3	0.6	1.2	1.6	3.2
LD3-XX-30-K3...	800	2500	9.5	7.5	0.6	1.2	1.6	3.2
LD3-XX-40-K3...	1000	2500	7.0	5.5	0.6	1.2	1.6	3.2
LD3Q-XX-20-D3...	500	2500	5.8	3.9	0.1	0.2	0.5	1.0
LD3Q-XX-30-D3...	800	2500	3.8	2.6	0.1	0.2	0.6	1.2

## MD10

**Input:** 24V DC  
**Max. Push Load:** 1000N  
**Max. Pull Load:** 1000N  
**Max. Speed at No Load:** 36.0mm/s  
**Stroke:** 50~300mm  
**Duty Cycle:** 10%  
**Noise Level:** ≤52dB

**IP Level:** IPX5 (Static; non-action)  
**Min. Installation Dimension:** 115mm+Stroke  
**Option:**  
 Hall-effect sensor  
 Mechanical push only extension tube



Model No.	Max. Push / Pull Load (N)	Typical Speed (mm/s)		Typical Current (A)	
		No Load	Full Load	No Load	Full Load
MD10-24F4...	1000	5.1	2.8	0.8	1.1
MD10-24R4...	1000	7.2	4.5	1.0	1.8
MD10-24F8...	750	10.1	4.3	0.8	1.4
MD10-24R8...	750	14.2	8.4	1.0	2.1
MD10-24FC...	500	15.1	7.4	0.8	1.3
MD10-24L8...	500	18.6	14.8	1.2	2.0
MD10-24RC...	500	21.6	13.9	1.0	1.8
MD10-24LC...	400	27.5	20.0	1.2	2.1
MD10-24LG...	250	36.0	29.3	1.2	1.9



## T-control

**Input:** 100 / 120 / 230 / 100~240V AC  
**Output:** 24V DC (EI transformer) or 29V DC (SMPS)  
**Output Rated Current:** 3A in total  
**Number of Actuator(s):** 1~3  
**Number of Control(s):** 1  
**Duty Cycle:** 10%  
**Color:** black or light grey RAL 7001  
**Electric Shock Protection Level:** Class II  
 Emergency lowering function with backup batteries  
 Can be mounted on FD60



FD60+T-control



H2Z

## CB3T

**Input:** 120 / 230 / 100~240V AC  
**Output:** 24V DC (EI transformer) or 29V DC (SMPS)  
**Output Rated Current:**  
 3A per channel for CB3T  
 5A in total for CB3T-SY  
**Number of Actuator(s):** 1~3  
**Number of Control(s):** 1  
**Duty Cycle:** 10%  
**Electric Shock Protection Level:** Class II  
**Option:**  
 Synchronization of 2 actuators (CB3T-SY)



H2Z

## CBT2

**Input:** 100 / 120 / 230 / 100~240V AC  
**Output:** 24V DC (EI transformer) or 29V DC (SMPS)  
**Output Rated Current:** 3A (per channel)  
**Number of Actuator:** 1~3  
**Number of Control:** 1  
**Duty Cycle:** 10%  
**Color:** black or light grey RAL 7001  
**Electric Shock Protection Level:** Class I, Class II  
 Emergency lowering function with backup batteries  
 Detachable AC power cord  
 Can be mounted on FD60



H2Z

## CB4M

**Input:** 110 / 230V AC  
**Output:** 24V DC (EI transformer)  
**Output Rated Current:** 3A (per channel)  
**Number of Actuator:** 2~4  
**Number of Control:** 1~2  
**Duty Cycle:** 10%  
**Electric Shock Protection Level:** Class I or Class II  
 With charger function  
**Option:**  
 Rechargeable batteries 12V DC 1.3Ah\*2  
 Synchronization for 2~4 actuators  
 Detachable AC power cord



H2N



HS23



## CS1

**Input:** 29V DC  
**Output:** 29V DC  
**Output Rated Current:** 3A (per channel)  
**Number of Actuator(s):** 1~2  
**Number of Control(s):** 1  
**Duty Cycle:** 10%  
**IP level:** IP42  
**Color:** black or light gray RAL 7001  
 Can be mounted on FD60



FD60+CS1

## CS2-BT

**Input:** 29V DC  
**Output:** 29V DC  
**Output Rated Current:** 4.5A (per channel)  
**Number of Actuator(s):** 2 (support joint movement)  
**Number of Control(s):** 1  
**Duty Cycle:** 10%  
**IP level:** IP42  
 Sync function  
 Memory function  
 Connections for under bed light and USB charger  
 Can be mounted on FD60  
**Option:**  
 Customized APP available



TX32

## CS2

**Input:** 29V DC  
**Output:** 29V DC  
**Output Rated Current:** 3A (per channel)  
**Number of Actuator(s):** 2~4  
**Number of Control(s):** 1  
**Duty Cycle:** 10%  
**IP level:** IP42  
 Joint movement function  
 With anti-pull clip  
 Can be mounted on FD60



FD60+CS2

## CF32

**Input:** 29V DC  
**Output:** 29V DC  
**Output Rated Current:** 3.5A (per channel)  
**Number of Actuator(s):** 2 (support joint movement)  
**Duty Cycle:** 10%  
**IP level:** IP42  
 Sync function  
 Memory function  
 Connections for under bed light and USB charger  
**Option:**  
 Customized APP available



TX32



## CF31

**Input:** 29V DC  
**Output:** 29V DC  
**Output Rated Current:** 3.5A (per channel)  
**Number of Actuator(s):** 2 (support joint-movement)  
**Duty Cycle:** 10%  
**IP level:** IP42  
 Sync function  
 Memory function  
 Connections for under bed light and USB charger  
 Connections for massage motors  
**Option:**  
 Customized APP available



TX31

## TX2A

**Input and Output Voltage:** 29V DC (power supply is not included)  
**Number of Actuator(s):** 1  
**Frequency:** 2.4GHz  
**Operating Distance:** 5m  
**Duty Cycle:** 10%  
 Spared flat function button  
 Remote control pairing button  
 LED operation indicator



TXZ

## CF11H

**Input:** 100~240V AC  
**Output:** 29V DC  
**Output Rated Current:** 3.6A (per channel)  
**Number of Actuator(s):** 1~2  
**Number of Control(s):** 1  
**Duty Cycle:** 10%  
**Electric Shock Protection Level:** Class II  
 Detachable AC power cord



H2N

## CF12H

**Input:** 100~240V AC  
**Output:** 29V DC  
**Output Rated Current:** 3.6A (per channel)  
**Number of Actuator(s):** 2~4  
**Number of Control(s):** 1  
**Duty Cycle:** 10%  
**Electric Shock Protection Level:** Class II  
 Detachable AC power cord



H2N



H2Z



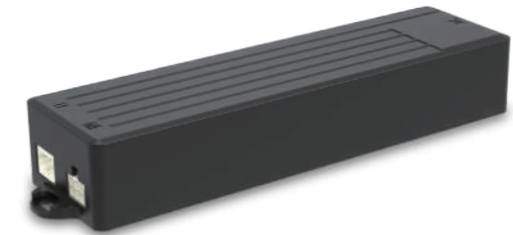
## CF11

**Input:** 100~240V AC  
**Output:** 32V DC  
**Output Rated Current:** 6A in total  
**Number of Actuator(s):** 2 (synchronization)  
**Number of Control(s):** 1  
**Duty Cycle:** 10%  
**Electric Shock Protection Level:** Class II  
 Anti-pinch protection (CF11D only)  
 Height display (compatible with DKP3, DP07, DP08)  
 Support USB charging  
 Soft start / stop  
 Memory function  
 Detachable AC Power cord  
**Options:**  
 CF11D for adjustable desks  
 CF11S for general applications



## CF13

**Input:** 100~240V AC  
**Output:** 29V DC  
**Output Rated Current:** 2A  
**Number of Actuator(s):** 1  
**Number of Control(s):** 1  
**Duty Cycle:** 10%  
**Electric Shock Protection Level:** Class II  
 Anti-pinch protection  
 Height display (compatible with DKP3, DP07, DP08)  
 Support USB charging  
 Soft start / stop  
 Memory function  
 Detachable AC Power cord



DP05



DP11



DP08



DP05



DP11



DP08

## CF12S

**Input:** 100~240V AC  
**Output:** 32V DC  
**Output Rated Current:** 3.6A (per channel)  
**Number of Actuator(s):** 4 (synchronization)  
**Number of Control(s):** 1  
**Duty Cycle:** 10%  
**Electric Shock Protection Level:** Class II  
 Soft start / stop  
 Memory function  
 Detachable AC power cord



DP05



DP11



DP08



## HD

**Motor Number to Control:** 1, 2, 3, 4  
**Available Number of Buttons:** 2, 4, 6, 8, 10  
 LED power on indicator  
 With hook  
**Option:**  
 Joint movement for 2 motors



## HJ

**Motor Number to Control:** 1, 2, 3  
**Available Number of Buttons:** 2, 4, 6  
 LED power on indicator  
 With hook  
**Option:**  
 Joint movement for 2 motors  
 Magnetic back cover



## DKP4

**Available Number of Buttons:** 2



## DP05

**Available Number of Touch Buttons:** 2  
 Touch control button  
 Sliding mounting bracket  
**Option:**  
 Color (black or white)



## HM

**Motor Number to Control:** 1, 2, 3  
**Available Number of Buttons:** 2, 4, 6, 8  
 LED power on indicator  
 With hook  
**Option:**  
 Joint or synchronous movement for 2 motors  
 Memory function  
 Safety key  
 Color (black or light grey RAL 7035)



## H2N

**Motor Number to Control:** 1, 2, 3  
**Available Number of Buttons:** 2, 4, 6, 7, 9  
 LED torch (white)  
 With hook  
**Option:**  
 Joint movement for 2 motors  
 Holder with or without hook



## DP11

**Available Number of Buttons:** 2  
 LED power on indicator



## DKP3

**Available Number of Buttons:** 7  
**Number of Memory Positions:** 4  
 3-digit LED display for height read-out and error code



## H3N

**Motor Number to Control:** 1, 2,  
**Available Number of Buttons:** 3, 5, 6, 7, 8, 10  
 LED power on indicator  
 LED torch (blue)  
 Button backlight (green)  
 With holder  
**Option:**  
 Joint movement for 2 motors  
 Memory function  
 Holder with or without hook  
 Color (textured black or matte black)



## H4N

**Motor Number to Control:** 2  
**Available Number of Buttons:** 5, 7, 8, 10  
 LED torch (blue)  
 With holder  
**Option:**  
 Joint movement for 2 motors  
 Button backlight (blue)  
 Memory function  
 Holder with or without hook



## DP07

**Available Number of Touch Buttons:** 6  
**Number of Memory Positions:** 3  
 3-digit LED display for height read-out and error code  
 Sliding mounting bracket  
**Option:**  
 USB charging port for 3C devices



With USB charging port



## DP08

**Available Number of Buttons:** 6  
**Number of Memory Positions:** 3  
 3-digit LED display for height read-out and error code  
**Option:**  
 USB charging port for 3C devices



With USB charging port





## HR

Motor Number to Control: 1 pc or 1 pair  
Available Number of Buttons: 2



## HDU

Motor Number to Control: 1, 2  
Available Number of Buttons: 2, 4



## HZ01

Motor Number to Control: 2  
Available Number of Buttons: 4  
Option:  
USB charging port (5V DC / 1A)  
Button texture (matte or glossy)



## HZ02

Motor Number to Control: 1  
Available Number of Buttons: 2



## H2Z

Motor Number to Control: 1, 2  
Available Number of Buttons: 2, 4, 6  
LED operation indicator  
With hook  
Option:  
Joint movement for 2 motors



## HS23

Motor Number to Control: 1, 2, 3, 4  
Available Number of Button: 13 Max.  
With hook  
Option:  
Magnetic back cover



## HZ03

Motor Number to Control: 1  
Available Number of Buttons: 2



## HZ04

Motor Number to Control: 1  
Available Number of Buttons: 2  
Option:  
USB charging port (5V DC / 1A)



## HZ05

Motor Number to Control: 1  
Available Number of Buttons: 2  
Option:  
USB charging port (5V DC / 1A)



## HZ06

Motor Number to Control: 1  
Available Number of Buttons: 2  
Option:  
USB charging port (5V DC / 1A)





## HB

**Motor Number to Control:** 1  
**Available Number of Buttons:** 2  
 With hook



## H2B

**Motor Number to Control:** 1, 2  
**Available Number of Buttons:** 2, 4  
 LED power on indicator  
 With hook



## TX11

**Motor Number to Control:** 2  
**Available Number of Buttons:** 5  
**Battery:** AAA\*3



## TXZ

**Motor Number to Control:** 1, 2  
**Available Number of Buttons:** 2, 4, 6  
**Battery:** AAA\*2  
 LED indicator  
 With hook  
 Safety key on the back  
**Option:**  
 Joint movement for 2 motors



## HS02

**Motor Number to Control:** 1  
**Available Number of Buttons:** 2



## HS15

**Motor Number to Control:** 2, 3  
**Available Number of Buttons:** 6, 8  
 LED power on indicator  
 With hook  
 Safety key  
**Option:**  
 Joint movement for 2 motors  
 Color (black or light grey RAL 7035)  
 Detachable cable set



## TXE

**Motor Number to Control :** 2  
**Available Number of Buttons:** 7  
**Battery:** Alkaline AAA x 2  
**IP Level:** IP20  
 LED indicator



## TXC

**Motor Number to Control:** 2, 3  
**Available Number of Buttons:** 5, 7, 9  
**Battery:** AAA\*3  
 LED torch (white)  
 Button backlight (blue)  
**Option:**  
 Joint movement for 2 motors  
 With hook



## TPSL

**Motor Number to Control:** 1  
**Available Number of Touch Buttons:** 2



## TX32

**Motor Number to Control:** 1, 2  
**Available Number of Buttons:** 13  
**Battery:** AAA\*3  
 LED torch (white)  
 Button backlight (blue)  
 Memory function  
**Option:**  
 Joint movement for 2 motors



## TX31

**Motor Number to Control:** 1, 2  
**Available Number of Buttons:** 17  
**Battery:** AAA\*3  
 LED torch (white)  
 Button backlight (blue)  
 Memory function  
**Option:**  
 Joint movement for 2 motors



## TXA

### RF Receiver

**Frequency:** 2.4GHz  
**Input:** 10~24V DC (TXA4) / 5V DC (TXA5)  
**Operating Distance:** 5m  
**Motor Number to Control:** 3  
 Work with control box or double motor  
 Flat function  
 LED indicator  
**Option:**  
 Memory function



## FL3

### Floor Light

**Input:** 24V DC  
 LED neutral white



## USB Charger

**Input:** 29V DC  
**Output:** QC 3.0 / PD 18W Max.  
**Cable Length:** 2200mm



## VM04

### Massage Motor

**Input:** 24V DC  
**Dimensions:** 98 x 55mm



## DPA-58-2920-C8

### Switching Mode Power Supply (SMPS)

**Input:** 100~240V AC  
**Standby Power Consumption:** < 0.5W  
**Output:** 29V DC, 2A  
**Electric Shock Protection Level:** Class II



## DPB-58-2920-C8

### Switching Mode Power Supply (SMPS)

**Input:** 100~240V AC  
**Standby Power Consumption:** < 0.5W  
**Output:** 29V DC, 2A  
**Color:** black or light grey (RAL 7035)  
**Electric Shock Protection Level:** Class II  
 Emergency lowering function



## DPA-87-2930-C8

### Switching Mode Power Supply (SMPS)

**Input:** 100~240V AC  
**Standby Power Consumption:** < 0.15W  
**Output:** 29V DC, 3A  
**Electric Shock Protection Level:** Class II



## DPA-72-2430-C6

### Switching Mode Power Supply (SMPS)

**Input:** 100~240V AC  
**Standby Power Consumption:** < 0.21W  
**Output:** 24V DC, 3A  
**Electric Shock Protection Level:** Class I



## ZB-B1800

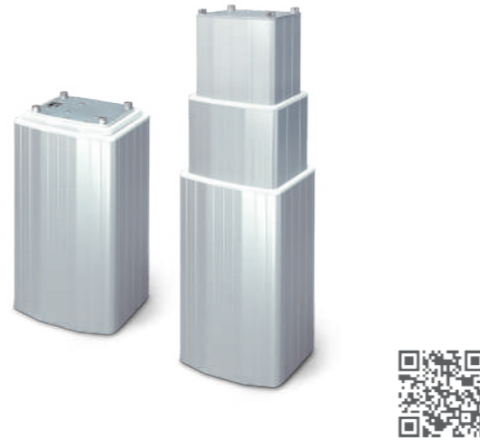
### Battery Pack

**Input:** 24~32V DC  
**Standby Power Consumption:** < 0.5W  
**Output:** 21~29V DC, 3.0A  
**Capacity:** 1800mAh  
**Over-current Protection:** 5A



## DLC1

**Input:** 24V DC  
**Max. Thrust:** 2000N  
**Typical Speed at No Load:** 10.9mm/s  
**Bending Moment:** 500Nm (static) / 250Nm (dynamic)  
**Stroke:** 50~400mm  
**Duty Cycle:** 10%  
**Noise Level:** ≤50dB  
**IP Level:** IPX4  
**Preset limit switches**  
**Option:**  
 Hall-effect sensor  
 IP Level: IPX6



Model No.	Max. Push Load (N)	Typical Speed (mm/s)		Typical Current (A)	
		No Load	Full Load	No Load	Full Load
DLC1-24RH-350.750...	2000	10.9	9.8	1.7	4.1

## DLC2

**Input:** 24V DC  
**Max. Thrust:** 2000N  
**Typical Speed at No Load:** 18mm/s  
**Bending Moment:** 1000Nm (static) / 750Nm (dynamic)  
**Stroke:** 140 / 261 / 450mm  
**Duty Cycle:** 10%  
**Noise Level:** ≤53dB  
**Preset limit switches**  
**Option:**  
 Hall-effect sensor



Model No.	Max. Push / Pull Load (N)	Typical Speed (mm/s)		Typical Current (A)	
		No Load	Full Load	No Load	Full Load
DCL2-24H6...	2000	18	13	1.1	4.5

## TW61

**Input:** 100~240V AC  
**Output:** 29V DC (SMPS)  
**Max. Load:** 2\*6000N  
**Typical Speed at No Load:** 5mm/s  
**Max. Number of Additional Actuators:** 2 channels (24V DC)  
**Max. Number of Control:** 1 channel  
**Stroke:** 29~87mm  
**Duty Cycle:** 10%  
**Noise Level:** ≤55dB  
**IP Level:** IP43  
**Color:** black or light grey (RAL 7035)  
**Electric Shock Protection Level:** Class II  
 Emergency lowering function  
**Option:**  
 Hall-effect sensors  
 IP Level: IP54



## TW61-RMS

**Input:** 100~240V AC  
**Output:** 29V DC (SMPS)  
**Max. Load:** 2\*6000N  
**Typical Speed at No Load:** 5mm/s  
**Stroke:** 29~87mm  
**Duty Cycle:** 10%  
**Noise Level:** ≤55dB  
**IP Level:** IP43  
**Color:** black  
**Electric Shock Protection Level:** Class II  
 Synchronization function  
 Built-in RF receiver  
 Memory function  
 Massage function  
 Emergency lowering function



# Gear Motor

## DKM1

**Input:** 24V DC  
**Typical Speed:** 66rpm  
**Max. Torque:** 5Nm  
**Duty Cycle:** 10%  
**Noise Level:**  $\leq 50$ dB  
**IP Level:** IP30  
**Hollow Shaft:** hexogen 8mm diameter  
With dual Hall-effect sensors



## DKM3

**Input:** 24V DC  
**Typical Speed:** 62rpm after gear reduction  
**Max. Torque:** 5Nm  
**Duty Cycle:** 10%  
**Noise Level:**  $\leq 50$ dB  
**IP Level:** IP30  
**Hollow Shaft:** hexogen 6 or 8mm diameter  
With dual Hall-effect sensors  
Compatible with CF11D and CF13



## DKM4-LF

**Input:** 24V DC  
**Max. Speed at No Load:** 110rpm after gear reduction  
**Max. Torque:** 7Nm  
**Duty Cycle:** 10%  
**Noise Level:**  $\leq 53$ dB  
**IP Level:** IP30  
**Hollow Shaft:** hexogen 6mm diameter  
With dual Hall-effect sensors  
Compatible with CF11D and CF13  
**Option:**  
Standard motor or high speed motor



# Desk Leg

## DKL3

**Input:** 24~32V DC  
**Max. Load:** 600N  
**Typical Speed:** 41mm/s  
**Stroke:** 650mm  
**Retracted Length:** 553mm  
**Duty Cycle:** 10%  
**Noise Level:**  $\leq 50$ dB  
With dual Hall-effect sensors



The information contained in this publication has been carefully taken to ensure the accuracy. However, it is the responsibility of the product user to determine the suitability for a specific application. There is no liability can be accepted for any loss or damage whether direct, indirect or consequential occurring out of the operation.

This catalog is made in Jan, 2025. The products might be subject to change without prior notice as Moteck's continuous improvement and maintenance on our products. Please refer to the respective product datasheets on our website for the latest information.