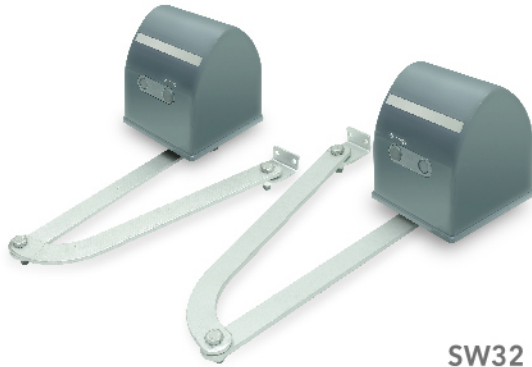




# GATE OPENER MOTORIZATION SOLUTION

- SWING GATE OPENER
- SLIDING GATE OPENER
- ACCESSORY

**MOTECK**  
[www.motek.com](http://www.motek.com)



SW32

### SWING GATE SERIES - ARM TYPE

**Max. Leaf Length:** 2.75m

**Max. Leaf Weight:** 275kg

**Input:** 110 / 230V AC

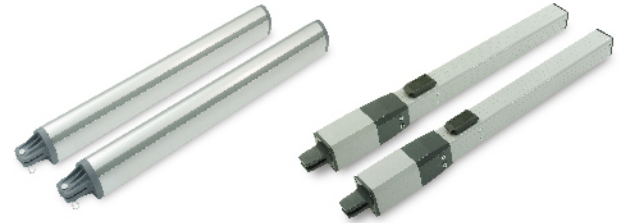
**Leaf Opening Time at 90°:** 16 seconds

**IP Level:** IP44

**Duty Cycle:** 20%

**Operating Temperature:** -20°C ~ +60°C

- Excellent reliability and easy installation
- User-friendly interface with 2-digit display
- Emergency stop function
- Error code display
- Pedestrian mode (single leaf opening)
- Dry contact for video door phone or external key switch
- Rolling code inspection for more secured access control
- Up to 20 remote control keys can be memorized
- Support charging function for backup battery (12V/5Ah lead-acid battery is optional)
- Support charging function by solar energy (7W solar panel is optional)
- The standard kit includes 2 arm type motors, 1 control box, 2 remote controls, 1 warning light and 2 photocells



SW12

SW40

### SWING GATE SERIES - ACTUATOR TYPE

**Max. Leaf Length:** 1.75m (SW12) , 3m (SW40)

**Max. Leaf Weight:** 150kg (SW12) , 200kg (SW40)

**Input:** 110 / 230V AC

**Leaf Opening Time at 90°:** 16 seconds

**IP Level:** IP44

**Duty Cycle:** 20%

**Operating Temperature:** -20 C ~ +60 C

- Excellent reliability and easy installation
- User-friendly interface with 2-digit display
- Emergency stop function
- Error code display
- Pedestrian mode (single leaf opening)
- Dry contact for video door phone or external key switch
- Rolling code inspection for more secured access control
- Up to 20 remote control keys can be memorized
- Support charging function for backup battery (12V/5Ah lead-acid battery is optional)
- Support charging function by solar energy (7W solar panel is optional)
- The standard kit includes 2 actuators, 1 control box, 2 remote controls, 1 warning light and 2 photocells



SL20



SL35

## SLIDING GATE SERIES

Max. Leaf Weight: 200 kg (SL20), 400 kg (SL35)

Input: 110 / 230V AC

Length of Tooth Racks: 4m with 8 tooth racks

IP Level: IP44

Duty Cycle: 20%

Operating Temperature: -20 C ~ +60 C

- Excellent reliability and easy installation
- User-friendly interface with 2-digit display
- Emergency stop function
- Pedestrian mode (partial opening)
- Dry contact for video door phone or external key switch
- Error code display
- Rolling code inspection for more secured access control
- Up to 20 remote controls can be memorized
- Support charging function by backup battery (lead-acid battery is optional)
- Support charging function by solar energy (7W solar panel is optional)
- Soft stop for more security
- The standard kit includes 1 motor, 8 tooth racks, 2 remote controls, 1 warning light and 2 photocells



### XM4H

Frequency: 433.92MHz with rolling code  
4 buttons, up to 10 channels

Battery: 12V/A27



### WLT1

Input: 12V DC / 10W

Provide flashing signals during gate movement and obstacle detection



## PHOTOCELLS

### IPH1

Current Consumption: TX: 30mA  
RX: 25mA



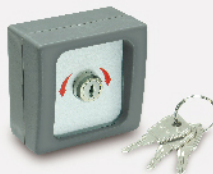
## WIRELESS KEYPAD

### RKP2

Frequency: 433.92MHz with Rolling code

Battery: 9V alkaline battery

Operating Temperature: -20°C ~ +60°C



## KEY SWITCH

### ESW1

Number of Switches: 2

Number of Keys: 3

Operating Temperature: -20°C ~ +60°C

Compatible with all Moteck gate opener control boxes as a wired security switch



## ABOUT MOTECK

Drawing on a heritage of more than 20 years in designing and producing reliable electromotive drive and control system, Moteck® products and solutions are comprehensively adopted by well-known customers worldwide. All products are tested and qualified by international standards, CE, UL, PSE and RoHS, according to different countries and industrial requirements. With strong capability of manufacturing, product development and system integration, we can meet specific customization needs.

## ADVANTAGE

- Satisfied Quality to Price Ratio
- High Creativity and Flexibility
- Customization Available for Diversified Specification
- Harmonious Integration of Electronic and Mechanical Engineering
- Professional Global Operations
- Manufacturing Capabilities with Large Scale Capacity

## SOLUTION FOR GATE OPENER

We have been in the global ODM and OEM business of gate opener motorization for 15 years. Numerous models and accessories are developed, and more than 1,000,000 sets of gate opener systems produced by Moteck have been installed by home users. Field test is executed to ensure our product can sustain the rigorous requirement of long endurance. Complete solution kits and accessories featured with market proof quality and easy installation for swing gate, sliding gate, garage door and swing shutter, are available to meet diversified application needs.



# MOTECK®

1F-1, No.79, Sec. 1, Xintai 5th Rd., Xizhi Dist., New Taipei City 22101, Taiwan (R.O.C.)  
Tel: +886-2-2698-1220 Fax: +886-2-2698-1324 E-mail: sales@moteck.com.tw

